

**PLAN LEGEND - FLOOR FINISHES**

01		TERRAZZO #1 SPECIFICATIONS
02		TERRAZZO #2 SPECIFICATIONS
03		TERRAZZO #3 SPECIFICATIONS
04		TERRAZZO #4 SPECIFICATIONS
05		FLOOR FINISH #5 SPECIFICATIONS

**RS&H**  
 Architectural, Engineering, Planning  
 and Environmental Services  
 Reynolds, Smith and Hills, Inc.  
 10748 Deerwood Park Boulevard South  
 Jacksonville, Florida 32256  
 904-256-2500 FAX 904-256-2501  
 www.rsandh.com  
 FL Cert Nos. AAC01186 EB000620 LGC000213

**JACKSONVILLE**  
 AVIATION AUTHORITY

JACKSONVILLE  
 INTERNATIONAL  
 AIRPORT

INTERIOR DESIGN  
 FLOOR FINISHES

KTD Inc.  
 KELLY TAARFF DESIGN

Lic# ID 0002289  
 FL# 13 0001146  
 Kelly@kellytaarffdesign.com  
 Tel: 813.695.5049  
 Fax: 813.805.2371

**REVISIONS**

NO.	DESCRIPTION	DATE

DATE ISSUED: 01.30.2009  
 REVIEWED BY: KT  
 DRAWN BY: cadvic.us - SB  
 DESIGNED BY: KTD, INC - KT  
 AEP PROJECT NUMBER  
 201-7262-009  
 © 2008 REYNOLDS, SMITH AND HILLS INC.  
 SHEET TITLE

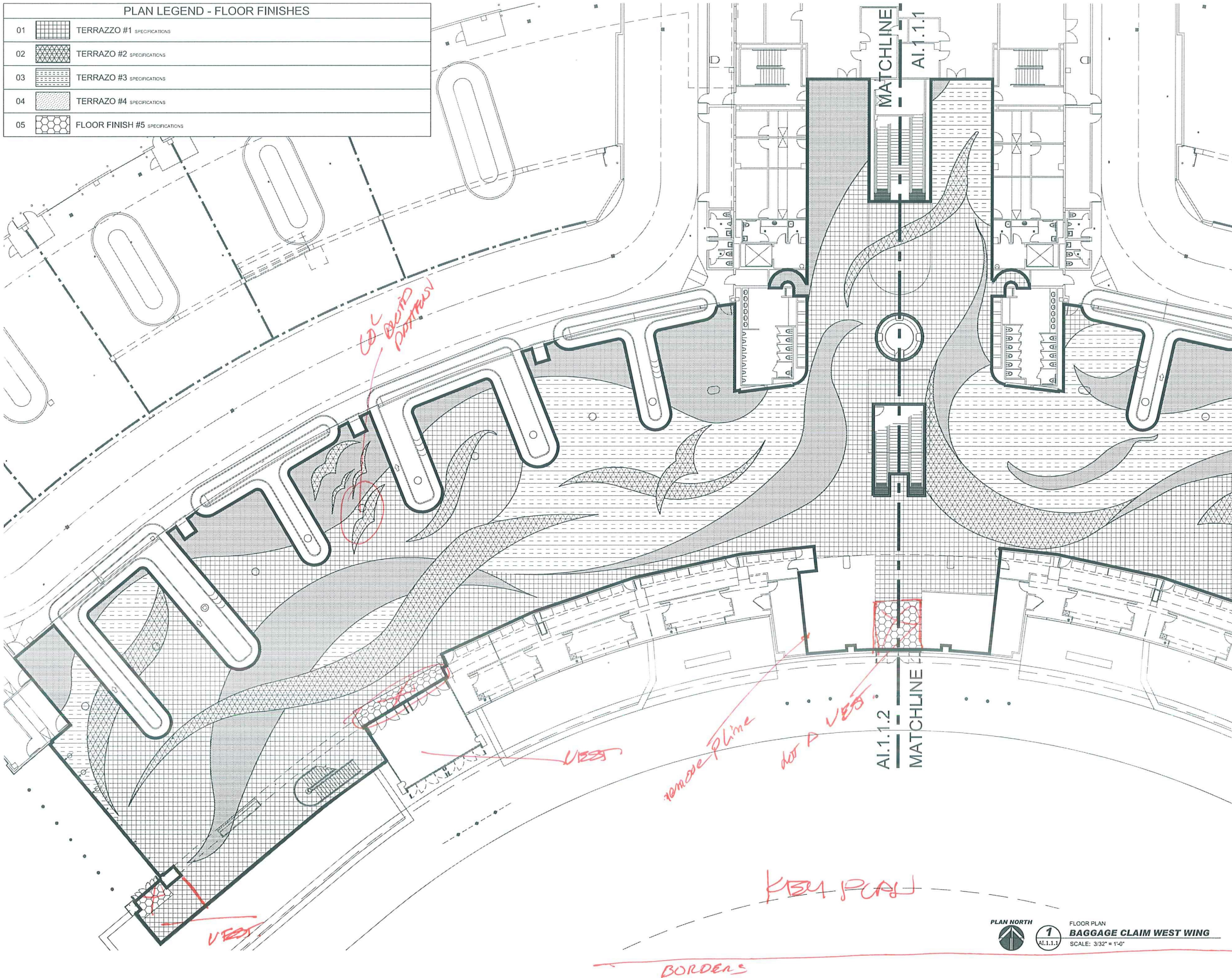
**BAGGAGE CLAIM  
 LOWER LEVEL  
 FLOOR FINISHES**

SHEET NUMBER  
**AI.1.1.1**  
 AI.1.1.1.SB.DWG

A III

PLAN NORTH  
  
 FLOOR PLAN  
**1**  
**BAGGAGE CLAIM EAST WING**  
 SCALE: 3/32" = 1'-0"

PLAN LEGEND - FLOOR FINISHES		
01		TERRAZZO #1 SPECIFICATIONS
02		TERRAZZO #2 SPECIFICATIONS
03		TERRAZZO #3 SPECIFICATIONS
04		TERRAZZO #4 SPECIFICATIONS
05		FLOOR FINISH #5 SPECIFICATIONS



Reynolds, Smith and Hills, Inc.  
15748 Deerwood Park Boulevard South  
Jacksonville, Florida 32256  
904-256-2500 FAX 904-256-2501  
www.rsandh.com  
FL Lic. No. AXC01989 EB000520 LC000213



JACKSONVILLE  
AVIATION AUTHORITY

JACKSONVILLE  
INTERNATIONAL  
AIRPORT

INTERIOR DESIGN  
FLOOR FINISHES



KID Inc.  
KELLY TAFFE DESIGN

Lic# ID 0002289  
FL# 13 0001446  
Kelly@kellytaffedesign.com  
Tel: 813.695.5049  
Fax: 813.605.2371

REVISIONS

NO.	DESCRIPTION	DATE

DATE ISSUED: 01.30.2009  
REVIEWED BY: KT  
DRAWN BY: cAdvice.us - SB  
DESIGNED BY: KTD, JNC - KT  
AEP PROJECT NUMBER  
201-7262-009  
© 2008 REYNOLDS, SMITH AND HILLS INC.  
SHEET TITLE

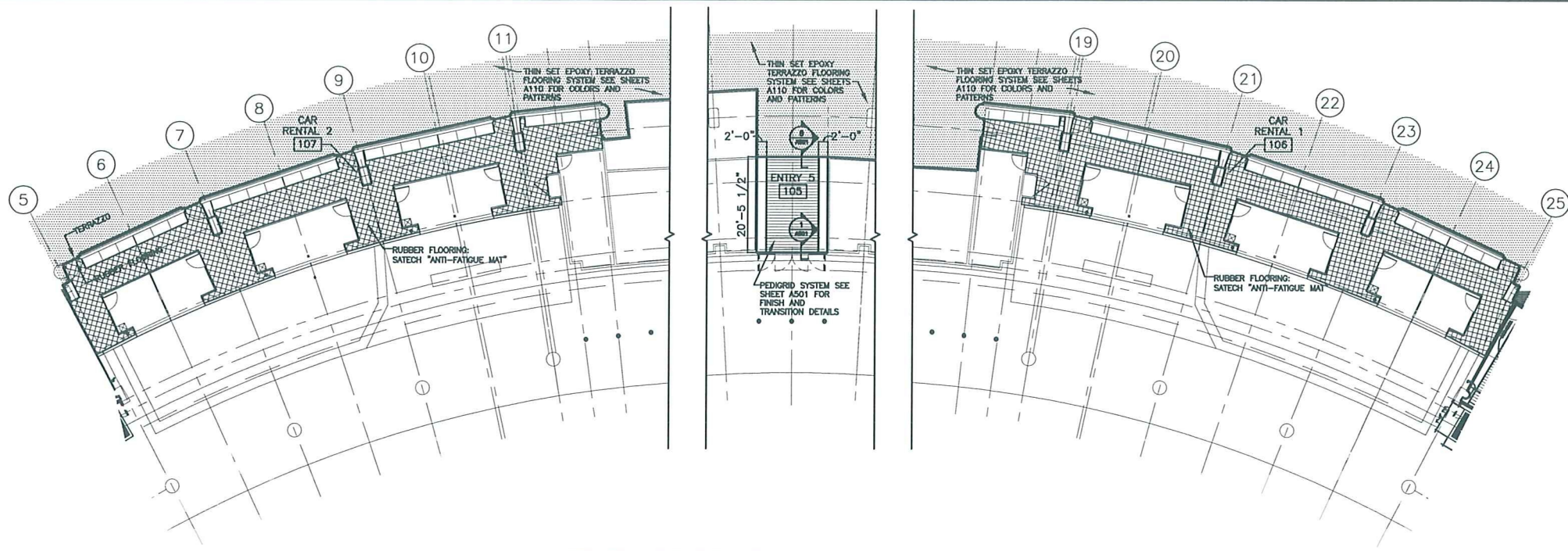
**BAGGAGE CLAIM  
LOWER LEVEL  
FLOOR FINISHES**

SHEET NUMBER  
**AI.1.1.2**

AI.1.1.2.DWG  
**A112**

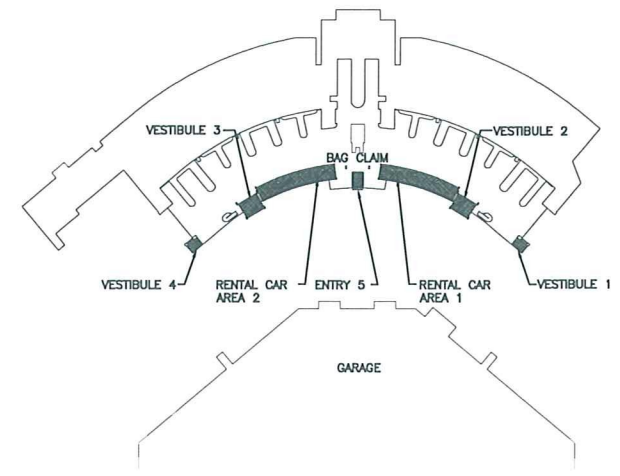


FLOOR PLAN  
**1**  
AI.1.1.1  
BAGGAGE CLAIM WEST WING  
SCALE: 3/32" = 1'-0"

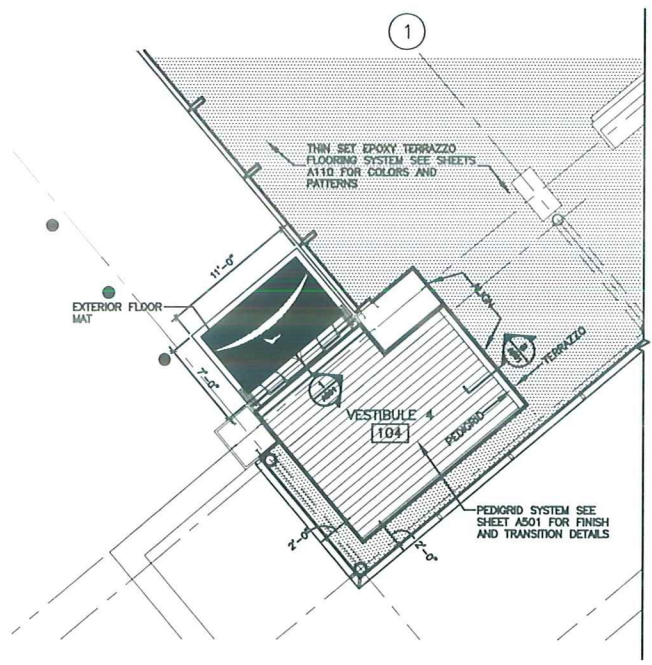


**5 ENLARGED BAG CLAIM LEVEL PLAN**  
SCALE: 1/16" = 1'-0"

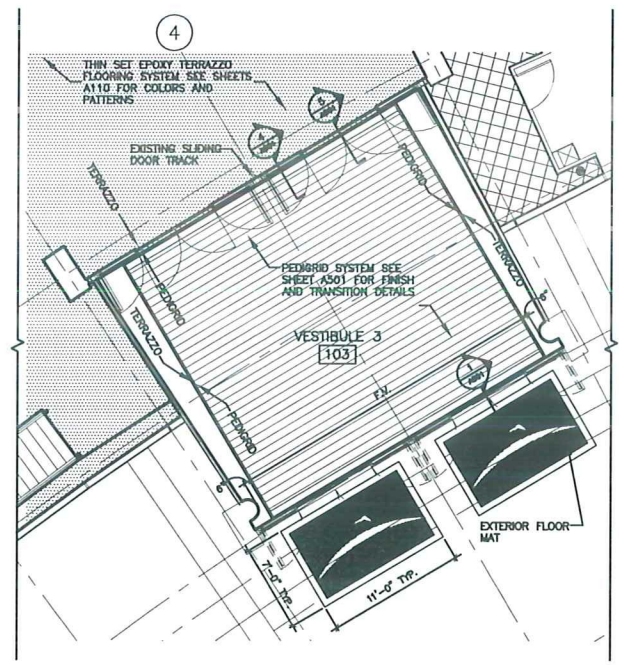
NOT FOR CONSTRUCTION -FOR REVIEW ONLY



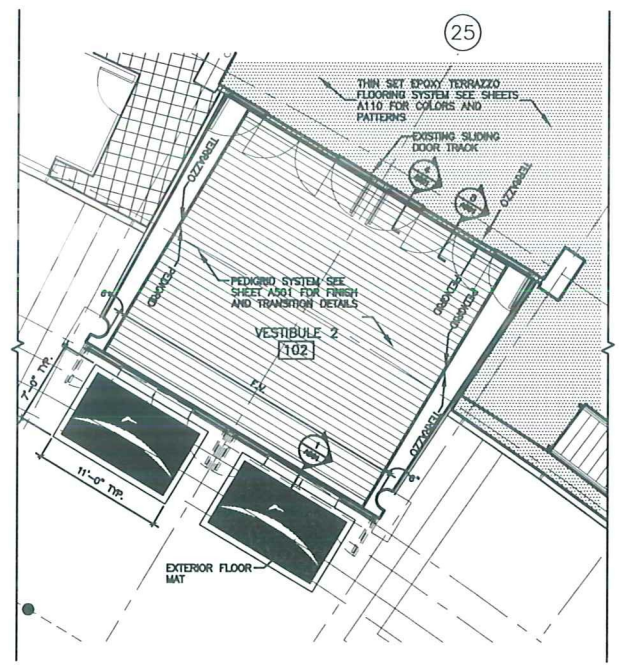
**1ST FLOOR KEY PLAN**  
SCALE: N.T.S



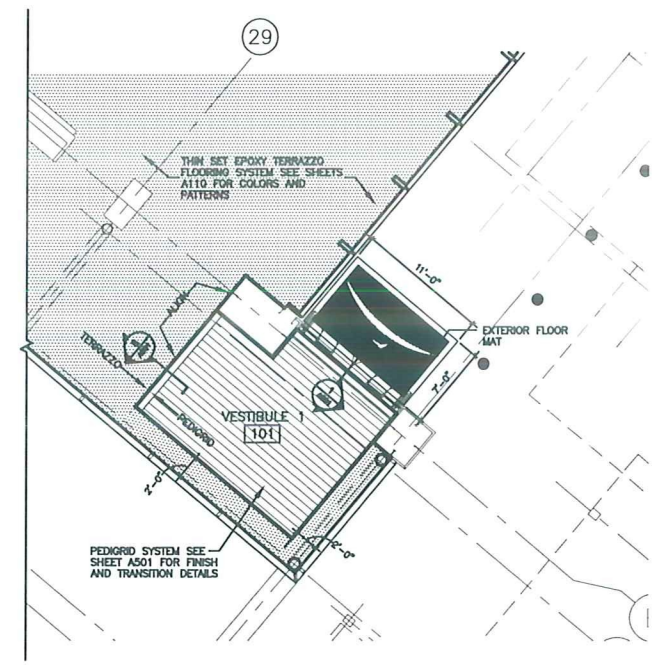
**4 ENLARGED VESTIBULE PLAN**  
SCALE: 1/8" = 1'-0"



**3 ENLARGED VESTIBULE PLAN**  
SCALE: 1/8" = 1'-0"



**2 ENLARGED VESTIBULE PLAN**  
SCALE: 1/8" = 1'-0"



**1 ENLARGED VESTIBULE PLAN**  
SCALE: 1/8" = 1'-0"



Reynolds, Smith and Hills, Inc.  
10748 Deerwood Park Blvd South  
Jacksonville, Florida 32256  
904-250-2500 FAX 904-250-2502  
www.rsandh.com  
FL Lic. No. AC000088 - 120009820 - 1CC000120



JACKSONVILLE INTERNATIONAL AIRPORT

**JIA TERMINAL FLOORING PROJECT**

REVISIONS

NO.	DESCRIPTION	DATE

DATE ISSUED, NOVEMBER 6, 2008  
REVIEWED BY: AS  
DRAWN BY: NA  
DESIGNED BY: -

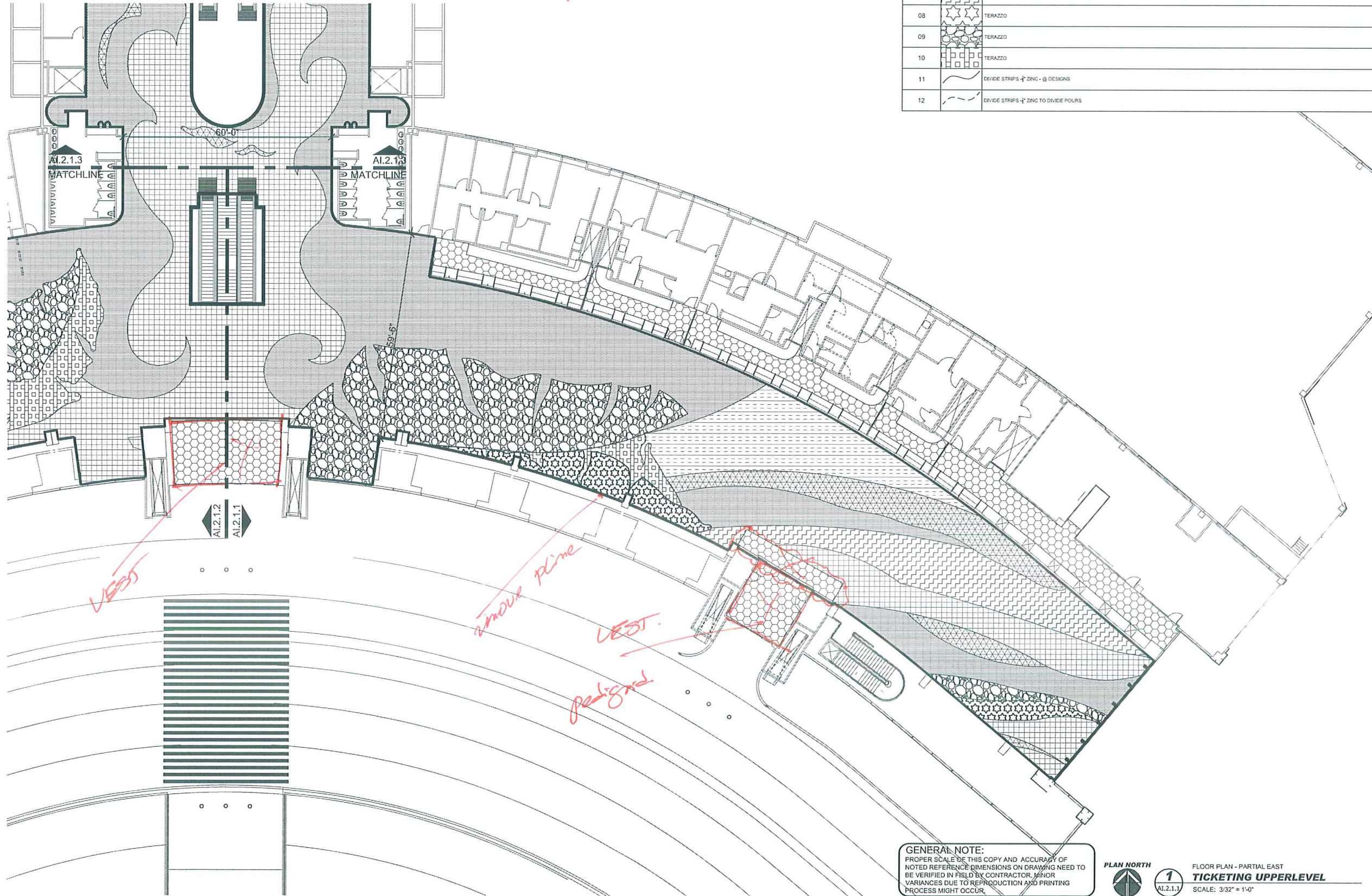
AEP PROJECT NUMBER  
**201-7262-009**  
© 2008 REYNOLDS, SMITH AND HILLS, INC.  
SHEET TITLE

**BAG CLAIM LEVEL FLOOR FINISH PLANS**

SHEET NUMBER  
**A113**

DESIGN DEVELOPMENT





KEY PLAN

PLAN LEGEND - FLOOR FINISHES		
#	PATTERN	SPECIFICATIONS
01	[Pattern]	TERAZZO
02	[Pattern]	TERAZZO
03	[Pattern]	TERAZZO
04	[Pattern]	TERAZZO
05	[Pattern]	TO BE DETERMINED (NEW DARK BLUE IN BAGGE CLAIM)
06	[Pattern]	<del>RUBBER FLOOR MATS</del>
07	[Pattern]	TERAZZO
08	[Pattern]	TERAZZO
09	[Pattern]	TERAZZO
10	[Pattern]	TERAZZO
11	[Pattern]	DIVIDE STRIPS - ZINC - @ DESIGNS
12	[Pattern]	DIVIDE STRIPS - ZINC TO DIVIDE POURS

**RS&H**  
 Architectural, Engineering, Planning  
 and Environmental Services  
 Reynolds, Smith and Hills, Inc.  
 18748 Deerwood Park Boulevard South  
 Jacksonville, Florida 32256  
 904-256-2500 FAX 904-256-2501  
 www.rsandh.com  
 FL Cert. No. AAC01889 EB005620 LSC000213

**JACKSONVILLE**  
 AVIATION AUTHORITY

JACKSONVILLE  
 INTERNATIONAL  
 AIRPORT

INTERIOR DESIGN  
 FLOOR FINISHES

**KTD Inc.**  
 KELLY TAARPE DESIGN

Lic# ID 0002289  
 FL# 13 0001146  
 Kelly@kellytaarpedesign.com  
 Tel: 813.695.5049  
 Fax: 813.805.2371

REVISIONS		
NO.	DESCRIPTION	DATE

DATE ISSUED: 01.30.2009  
 REVIEWED BY: KT  
 DRAWN BY: cAdvice.us - SB  
 DESIGNED BY: KTD, INC - KT  
 AEP PROJECT NUMBER  
 201-7262-009  
 © 2008 REYNOLDS, SMITH AND HILLS INC.  
 SHEET TITLE

**TICKETING  
 UPPER LEVEL  
 FLOOR FINISHES**

SHEET NUMBER  
**A1.2.1.1**  
 A1.2.0.58.DWG

A 211

GENERAL NOTE:  
 PROPER SCALE OF THIS COPY AND ACCURACY OF  
 NOTED REFERENCE DIMENSIONS ON DRAWING NEED TO  
 BE VERIFIED IN FIELD BY CONTRACTOR. MINOR  
 VARIANCES DUE TO REPRODUCTION AND PRINTING  
 PROCESS MIGHT OCCUR.



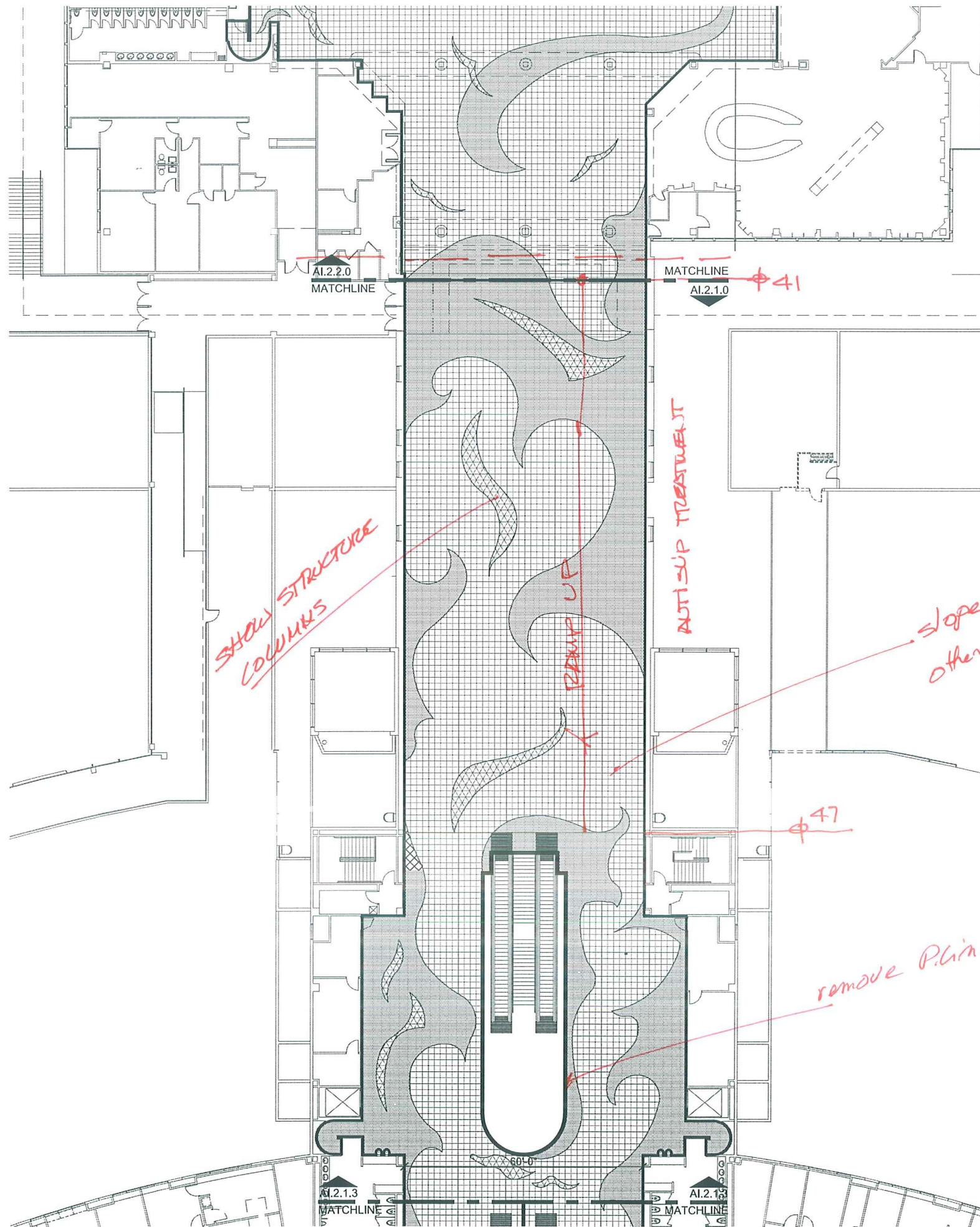
PLAN NORTH

1  
 A1.2.1.1

FLOOR PLAN - PARTIAL EAST  
**TICKETING UPPERLEVEL**  
 SCALE: 3/32" = 1'-0"

BORDER





PLAN LEGEND - FLOOR FINISHES		
#	PATTERN	SPECIFICATIONS
01	[Pattern]	TERAZZO
02	[Pattern]	TERAZZO
03	[Pattern]	TERAZZO
04	[Pattern]	TERAZZO
05		TO BE DETERMINED (NEW DARK BLUE IN BAGGE CLAIM)
06	[Pattern]	RUBBER FLOOR MATS
07	[Pattern]	TERAZZO
08	[Pattern]	TERAZZO
09	[Pattern]	TERAZZO
10	[Pattern]	TERAZZO
11	[Pattern]	DIVIDE STRIPS - 1" ZINC - @ DESIGNS
12	[Pattern]	DIVIDE STRIPS - 1" ZINC TO DIVIDE POURS



Reynolds, Smith and Hills, Inc.  
10748 Deerwood Park Boulevard South  
Jacksonville, Florida 32256  
904-256-2500 FAX 904-256-2501  
www.rsandh.com  
FL Cert No. AC01186 EB006920 LGC000213



JACKSONVILLE  
AVIATION AUTHORITY

JACKSONVILLE  
INTERNATIONAL  
AIRPORT

INTERIOR DESIGN  
FLOOR FINISHES



KTD Inc.  
KELLY TAFFA DESIGN

Lic# ID 0002289  
FL# 13 0001146  
Kelly@kellytaffadesign.com  
Tel: 813.695.5049  
Fax: 813.805.2371

REVISIONS

NO.	DESCRIPTION	DATE

DATE ISSUED: 01.30.2009

REVIEWED BY: KT

DRAWN BY: cAdvice.us - SB

DESIGNED BY: KTD, INC - KT

AEP PROJECT NUMBER

201-7262-009

© 2008 REYNOLDS, SMITH AND HILLS INC.

SHEET TITLE

**TICKETING  
UPPER LEVEL  
FLOOR FINISHES**

SHEET NUMBER

**AI.2.1.3**  
AI.2.1.3.DWG

**A213**

GENERAL NOTE:  
PROPER SCALE OF THIS COPY AND ACCURACY OF NOTED REFERENCE DIMENSIONS ON DRAWING NEED TO BE VERIFIED IN FIELD BY CONTRACTOR. MINOR VARIANCES DUE TO REPRODUCTION AND PRINTING PROCESS MIGHT OCCUR.



FLOOR PLAN - PARTIAL NORTH  
**TICKETING UPPERLEVEL**  
SCALE: 3/32" = 1'-0"

*BORDERS*



NOT FOR CONSTRUCTION -FOR REVIEW ONLY



Reynolds, Smith and Hills, Inc.  
 10748 Deerwood Park Blvd South  
 Jacksonville, Florida 32256  
 904-250-2500 FAX 904-250-2502  
 www.rsandh.com  
 FL Lic. No. AC000088 - 28006828 - LCC00018



JACKSONVILLE  
 AVIATION AUTHORITY

JACKSONVILLE  
 INTERNATIONAL  
 AIRPORT

JIA TERMINAL  
 FLOORING  
 PROJECT

REVISIONS

NO.	DESCRIPTION	DATE

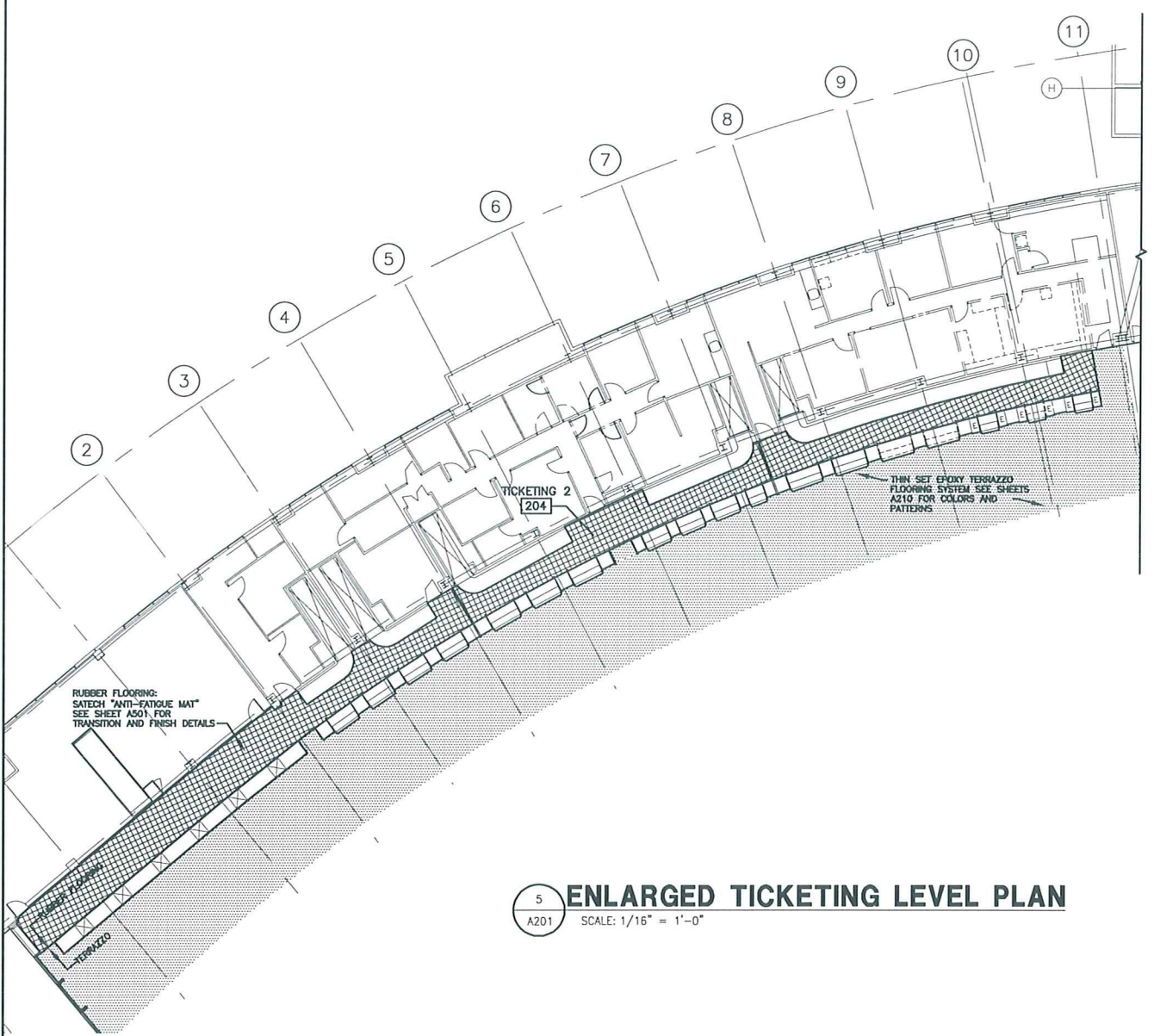
DATE ISSUED, NOVEMBER 6, 2008  
 REVIEWED BY: AS  
 DRAWN BY: NA  
 DESIGNED BY: -

AEP PROJECT NUMBER  
 201-7262-009  
 © 2008 REYNOLDS, SMITH AND HILLS, INC.  
 SHEET TITLE

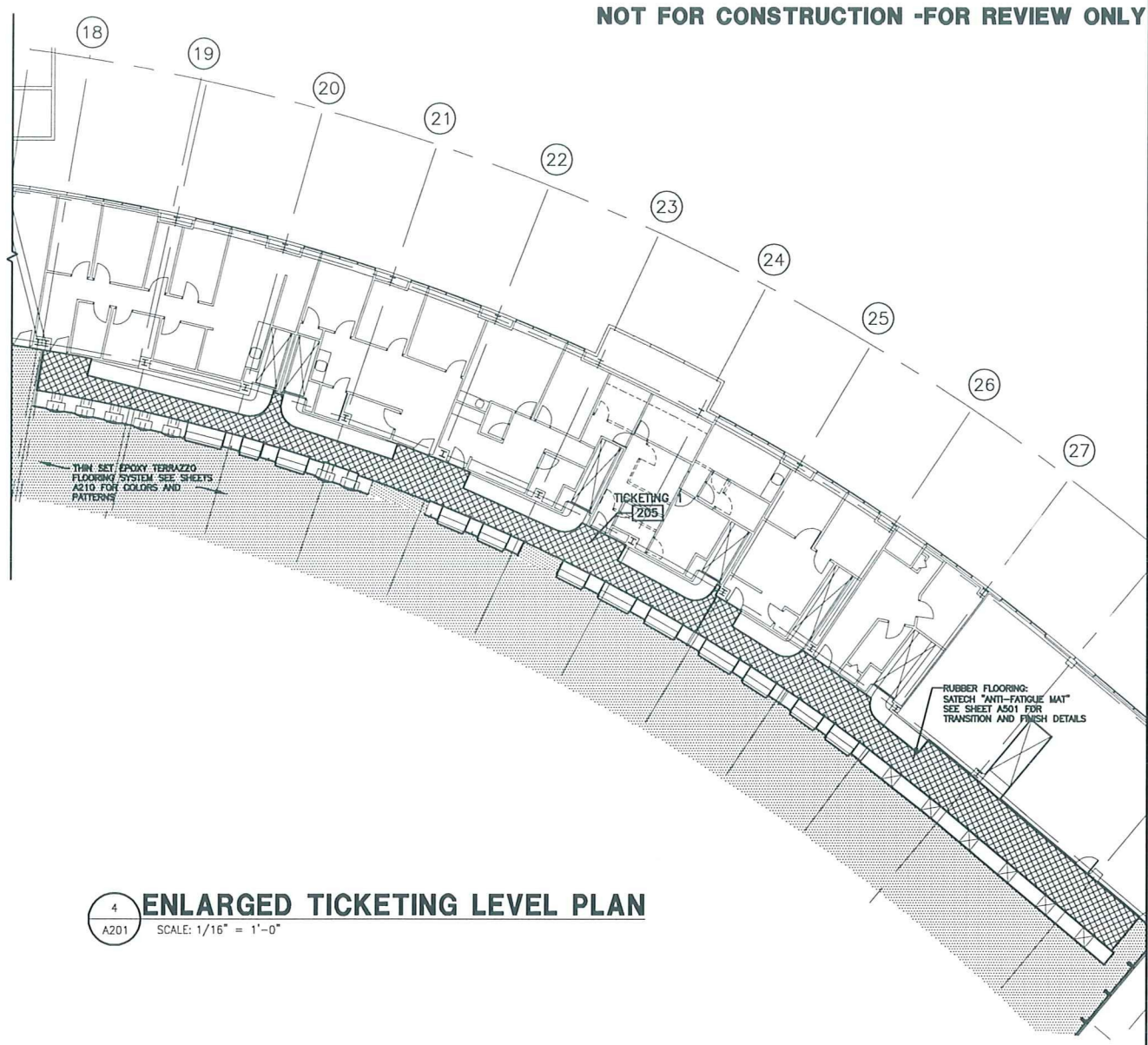
TICKETING LEVEL  
 FLOOR FINISH  
 PLANS

SHEET NUMBER  
**A214**

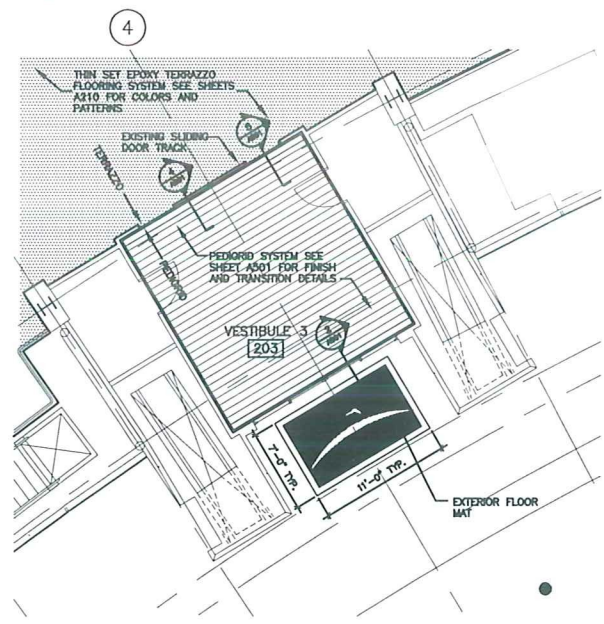
DESIGN  
 DEVELOPMENT



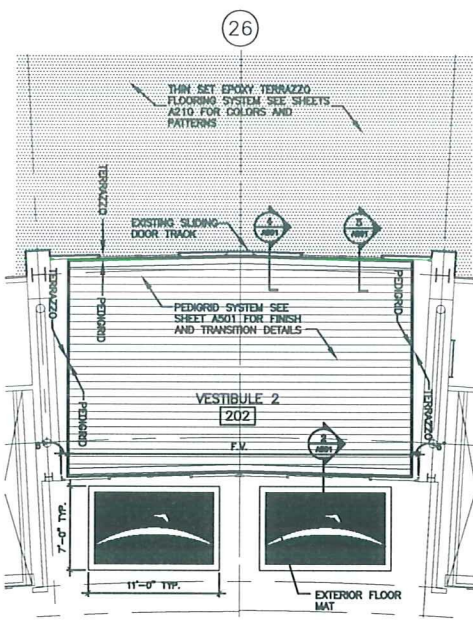
5 ENLARGED TICKETING LEVEL PLAN  
 A201 SCALE: 1/16" = 1'-0"



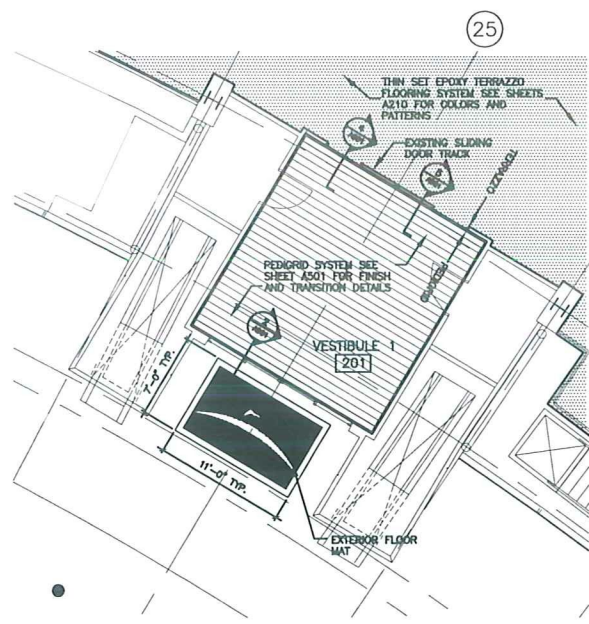
4 ENLARGED TICKETING LEVEL PLAN  
 A201 SCALE: 1/16" = 1'-0"



3 ENLARGED VESTIBULE PLAN  
 A201 SCALE: 1/8" = 1'-0"



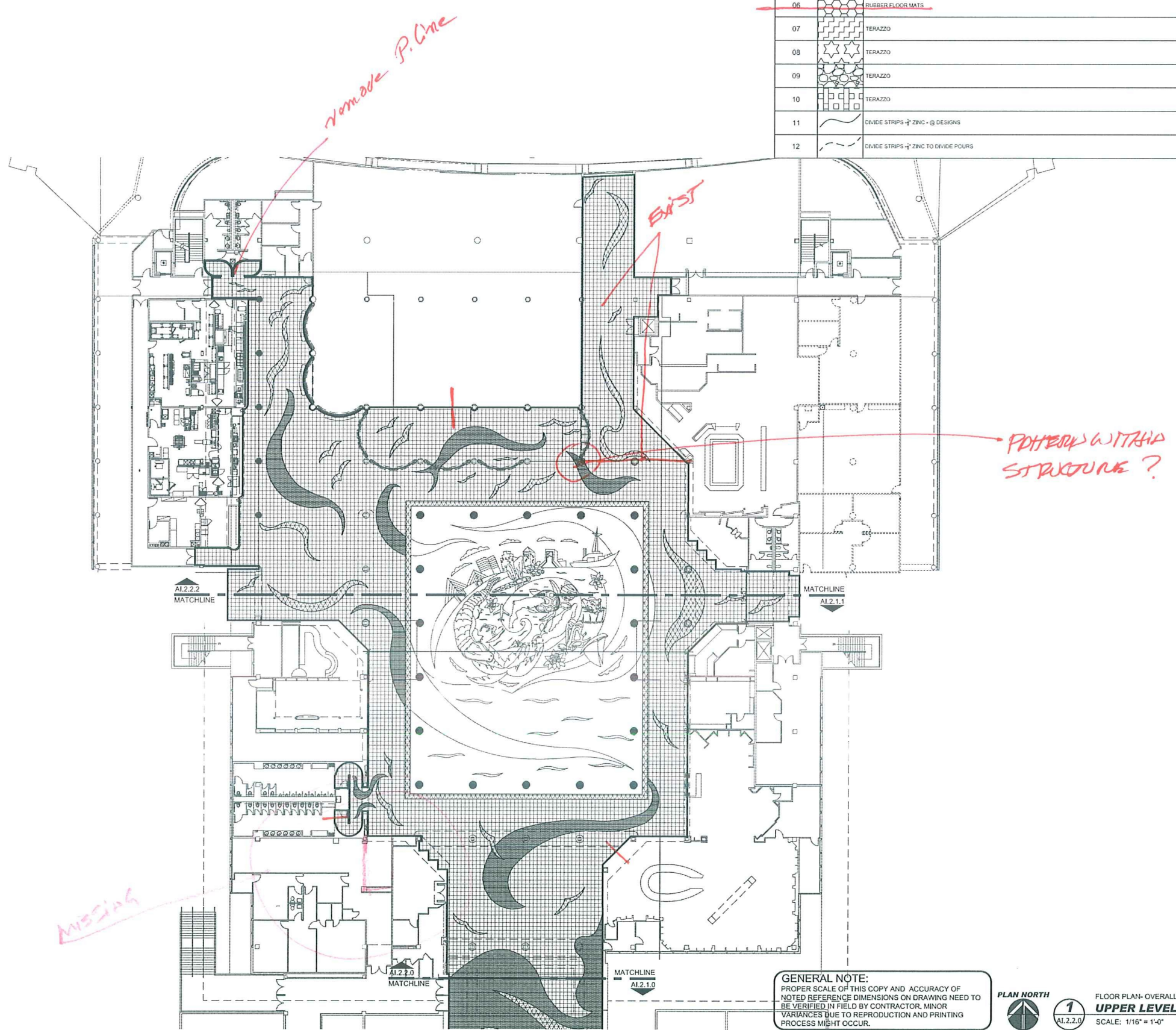
2 ENLARGED VESTIBULE PLAN  
 A201 SCALE: 1/8" = 1'-0"



1 ENLARGED VESTIBULE PLAN  
 A201 SCALE: 1/8" = 1'-0"

PLAN LEGEND - FLOOR FINISHES		
#	PATTERN	SPECIFICATIONS
01		TERAZZO
02		TERAZZO
03		TERAZZO
04		TERAZZO
05		TO BE DETERMINED (NEW DARK BLUE IN BAGGE CLAIM)
06		RUBBER FLOOR MATS
07		TERAZZO
08		TERAZZO
09		TERAZZO
10		TERAZZO
11		DIVIDE STRIPS - ZINC - @ DESIGNS
12		DIVIDE STRIPS - ZINC TO DIVIDE POURS

KEY PLAN



GENERAL NOTE:  
 PROPER SCALE OF THIS COPY AND ACCURACY OF  
 NOTED REFERENCE DIMENSIONS ON DRAWING NEED TO  
 BE VERIFIED IN FIELD BY CONTRACTOR. MINOR  
 VARIANCES DUE TO REPRODUCTION AND PRINTING  
 PROCESS MIGHT OCCUR.



1  
 AI.2.2.0

FLOOR PLAN-OVERALL  
**UPPER LEVEL CONCOURSE**  
 SCALE: 1/16" = 1'-0"



Reynolds, Smith and Hills, Inc.  
 10748 Deerwood Park Boulevard South  
 Jacksonville, Florida 32256  
 904-256-2500 FAX 904-256-2501  
 www.rsandh.com  
 FL Cert No. AC201186 EB000520 LSC000210



JACKSONVILLE  
 AVIATION AUTHORITY

JACKSONVILLE  
 INTERNATIONAL  
 AIRPORT

INTERIOR DESIGN  
 FLOOR FINISHES



Lic# ID 0002289  
 FL# 13 0001146  
 Kelly@kellytaaffe.com  
 Tel: 813.695.5049  
 Fax: 813.805.2371

REVISIONS		
NO.	DESCRIPTION	DATE

DATE ISSUED: 01.30.2009  
 REVIEWED BY: KT  
 DRAWN BY: cAdvice.us - SB  
 DESIGNED BY: KTD,INC - KT  
 AEP PROJECT NUMBER  
 201-7262-009  
 © 2006 REYNOLDS, SMITH AND HILLS INC.  
 SHEET TITLE

**CONCOURSE  
 UPPER LEVEL  
 FLOOR FINISHES**

SHEET NUMBER  
**AI.2.2.0**  
 AI.2.2.0.E.DWG

**A 220**



PLAN LEGEND - FLOOR FINISHES		
#	PATTERN	SPECIFICATIONS
01		TERAZZO
02		TERAZZO
03		TERAZZO
04		TERAZZO
05		TO BE DETERMINED (NEW DARK BLUE IN BAGGE CLAIM)
06		RUBBER FLOOR MATS
07		TERAZZO
08		TERAZZO
09		TERAZZO
10		TERAZZO
11		DIVIDE STRIPS - ZINC @ DESIGNS
12		DIVIDE STRIPS - ZINC TO DIVIDE POURS

GENERAL NOTE:  
 PROPER SCALE OF THIS COPY AND ACCURACY OF  
 NOTED REFERENCE DIMENSIONS ON DRAWING NEED TO  
 BE VERIFIED IN FIELD BY CONTRACTOR. MINOR  
 VARIANCES DUE TO REPRODUCTION AND PRINTING  
 PROCESS MIGHT OCCUR.



Reynolds, Smith and Hills, Inc.  
 10748 Deerwood Park Boulevard South  
 Jacksonville, Florida 32256  
 904-256-2500 FAX 904-256-2501  
 www.rsandh.com  
 FL Cert No. AAC01186 EB000920 LSC000213



JACKSONVILLE  
 INTERNATIONAL  
 AIRPORT

INTERIOR DESIGN  
 FLOOR FINISHES



Lic# ID 0002289  
 FL# 13 0001146  
 Kelly@kellytaaffe.com  
 Tel: 813.695.5049  
 Fax: 813.805.2371

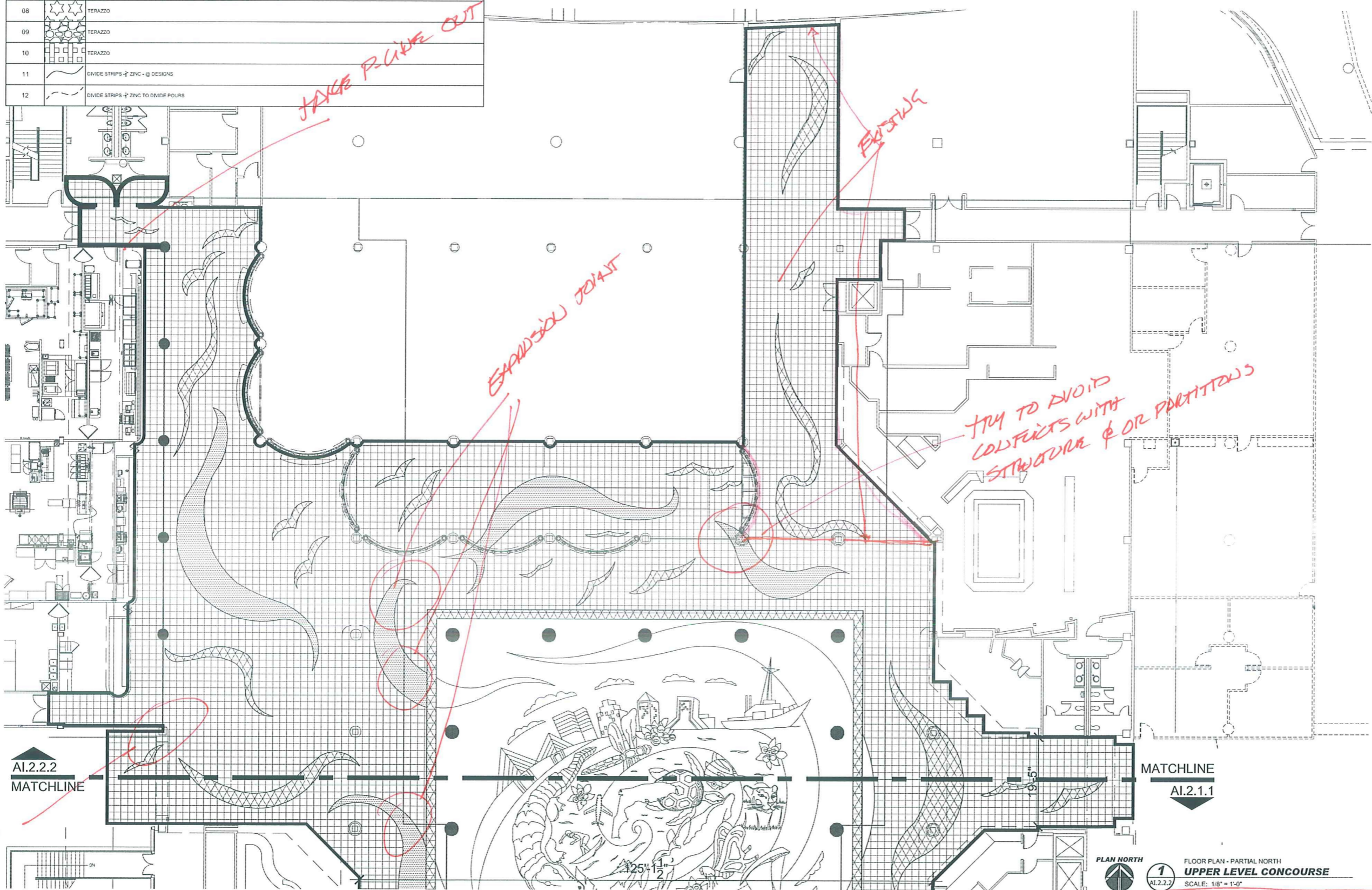
REVISIONS		
NO.	DESCRIPTION	DATE

DATE ISSUED: 01.30.2009  
 REVIEWED BY: KT  
 DRAWN BY: cAdvice.us - SB  
 DESIGNED BY: KTD, INC - KT  
 AEP PROJECT NUMBER  
 201-7262-009  
 © 2008 REYNOLDS, SMITH AND HILLS, INC.  
 SHEET TITLE

**CONCOURSE  
 UPPER LEVEL  
 FLOOR FINISHES**

SHEET NUMBER  
**AI.2.2.2**  
 AI.2.0.SB.DWG

A222



KEY PLAN

EXPANSION JOINT

EXPANSION JOINT

TRY TO AVOID  
 CONFLICTS WITH  
 STRUCTURE & OR PARTITIONS

MATCHLINE  
 AI.2.2.2

MATCHLINE  
 AI.2.1.1



1  
 AI.2.2.2  
 SCALE: 1/8" = 1'-0"

BORDER

REVISIONS

NO.	DESCRIPTION	DATE

DATE ISSUED: NOVEMBER 6, 2008

REVIEWED BY:  
DRAWN BY:  
DESIGNED BY:

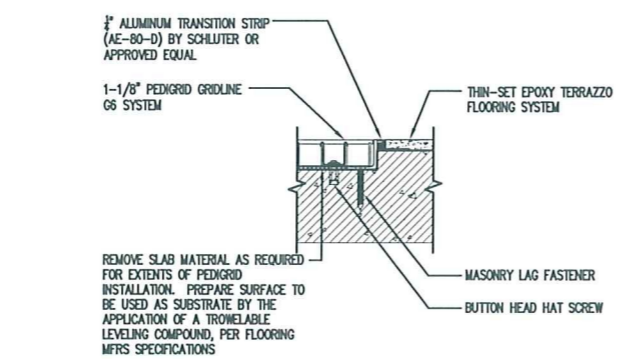
AEP PROJECT NUMBER  
**201-7262-009**

© 2008 REYNOLDS, SMITH AND HILLS, INC.

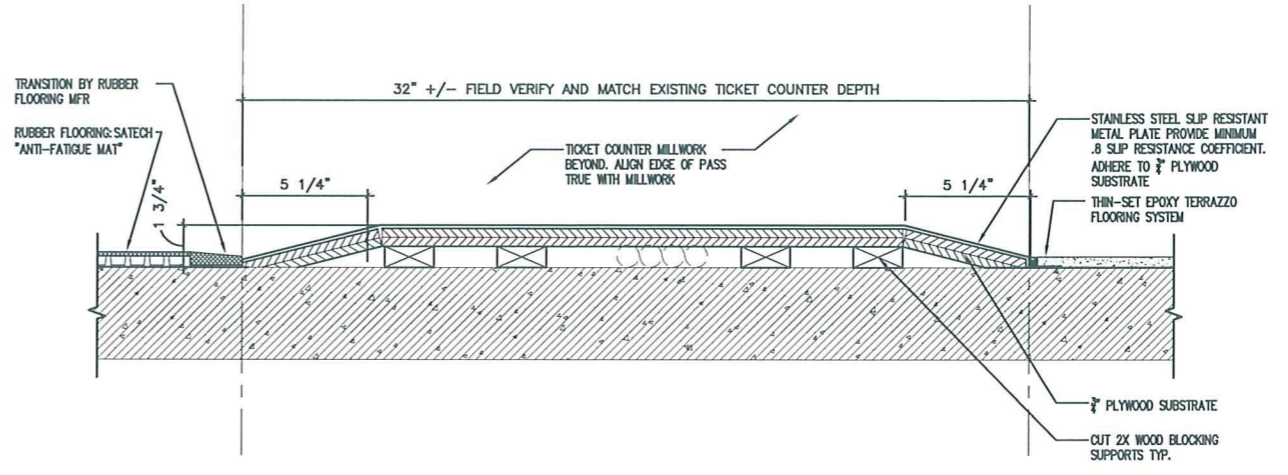
SHEET TITLE  
**FLOORING AND**  
**TRANSITION**  
**DETAILS**

SHEET NUMBER  
**A501**

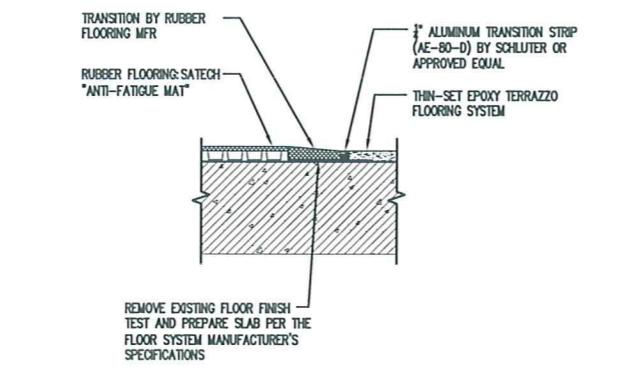
DESIGN  
DEVELOPMENT



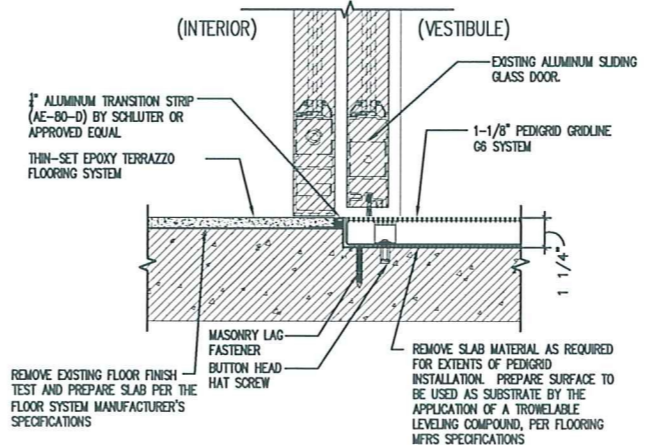
**8 W.O. MAT/TERR. TRANSITION**  
SCALE: 3" = 1'-0"



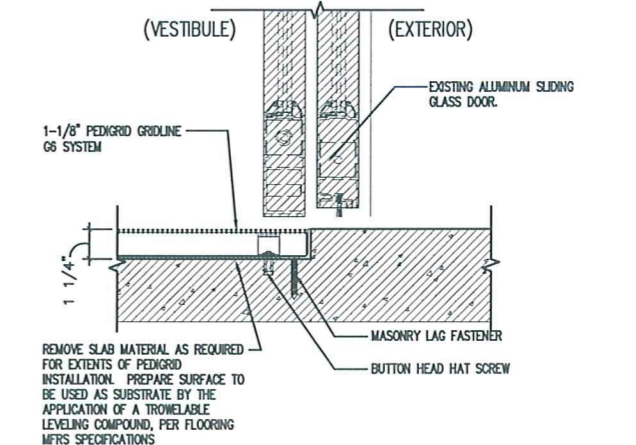
**3 PASS THRU DETAIL AT TICKET COUNTERS**  
SCALE: 3" = 1'-0"



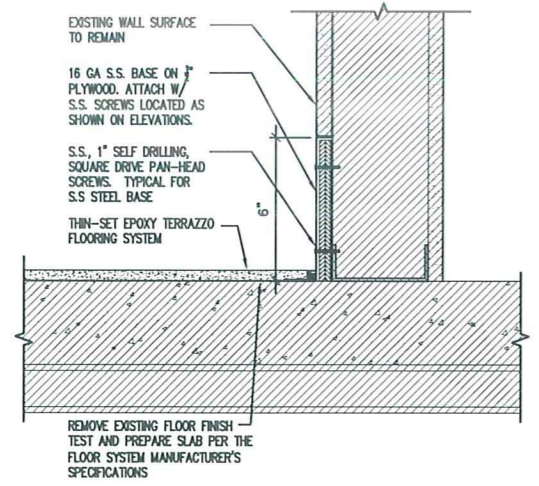
**7 TERR./RUBBER FLR TRANSITION**  
SCALE: 3" = 1'-0"



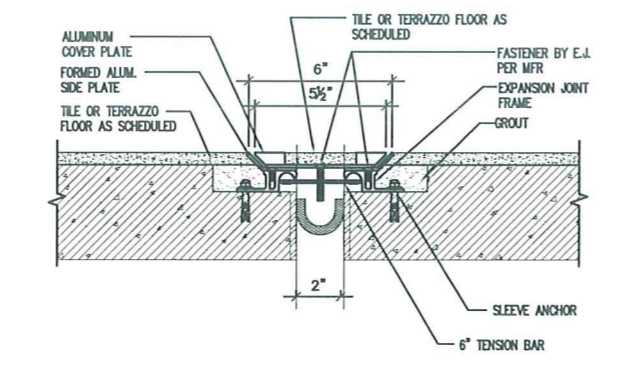
**5 FLOOR TRANS. @ DOOR**  
SCALE: 3" = 1'-0"



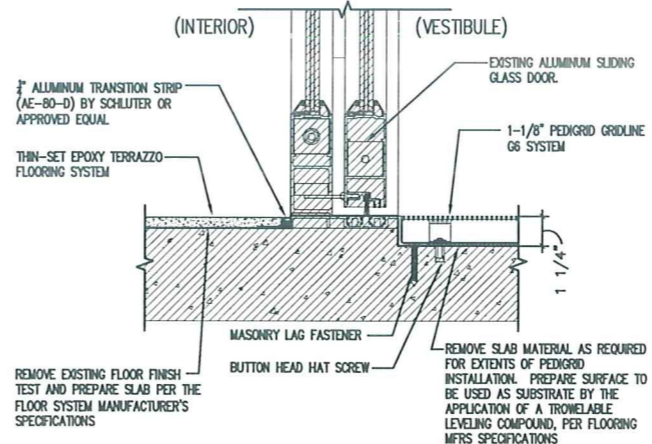
**2 VESTIBULE/EXTERIOR THRESHOLD**  
SCALE: 3" = 1'-0"



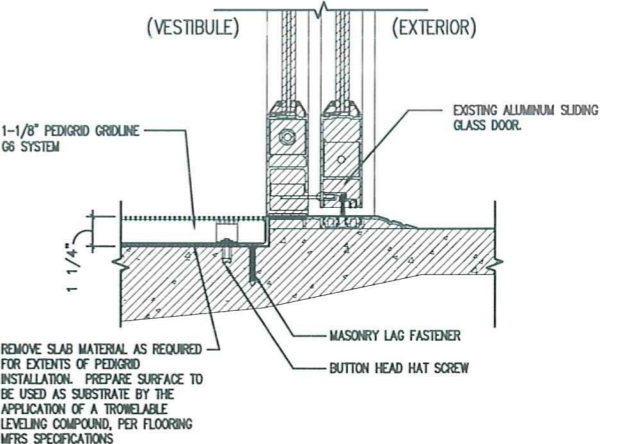
**9 STAINLESS STEEL BASE DETAIL**  
SCALE: 3" = 1'-0"



**6 EXPANSION JOINT DETAIL**  
SCALE: 3" = 1'-0"



**4 INTERIOR DOOR THRESHOLD**  
SCALE: 3" = 1'-0"



**1 EXTERIOR DOOR THRESHOLD**  
SCALE: 3" = 1'-0"