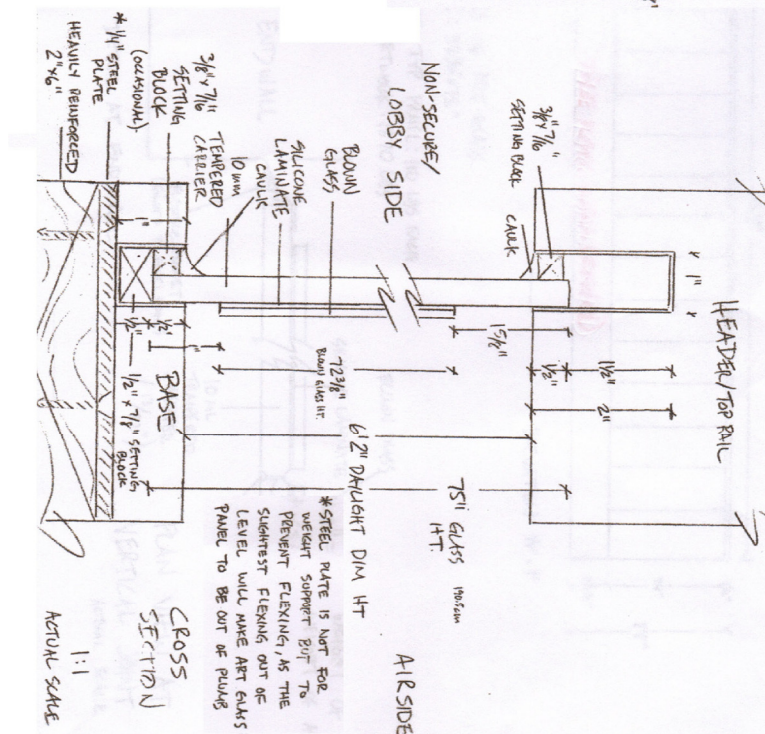
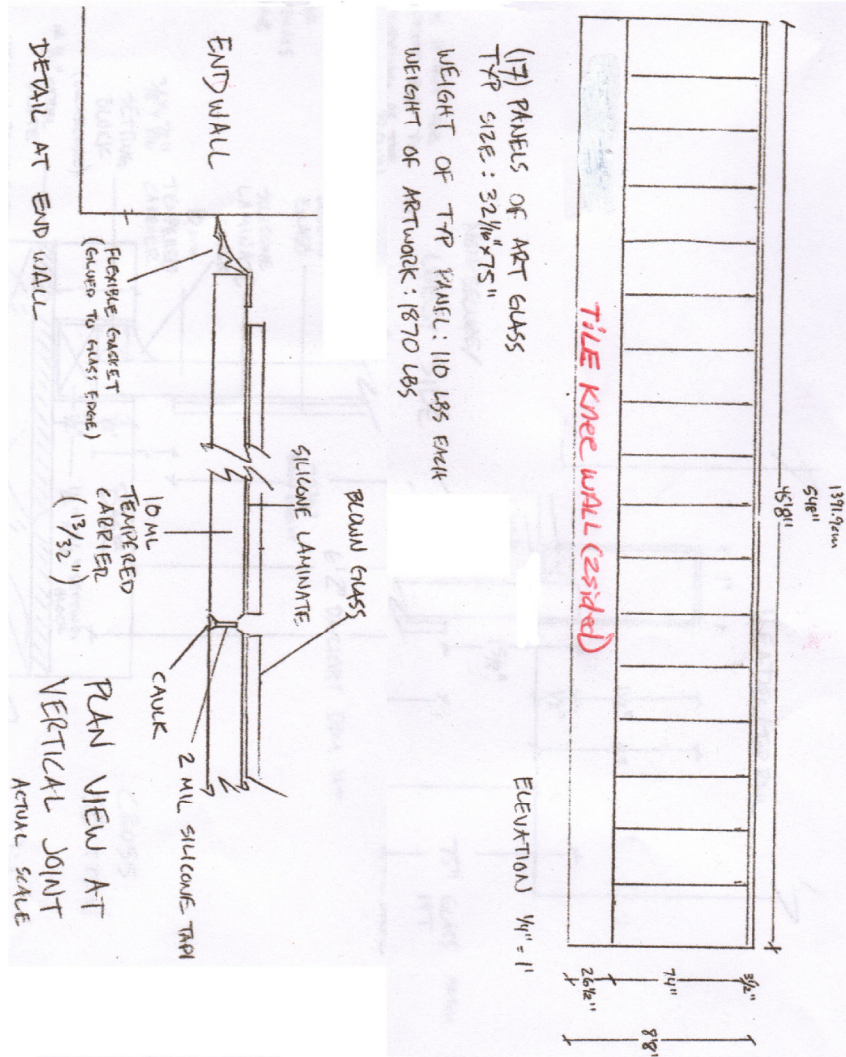


SEALED BID # 089-0289-CP(DM) ADDENDUM 01 - G

GATES 2-6 - CL 101 - ART GLASS WALL SCALE: NTS

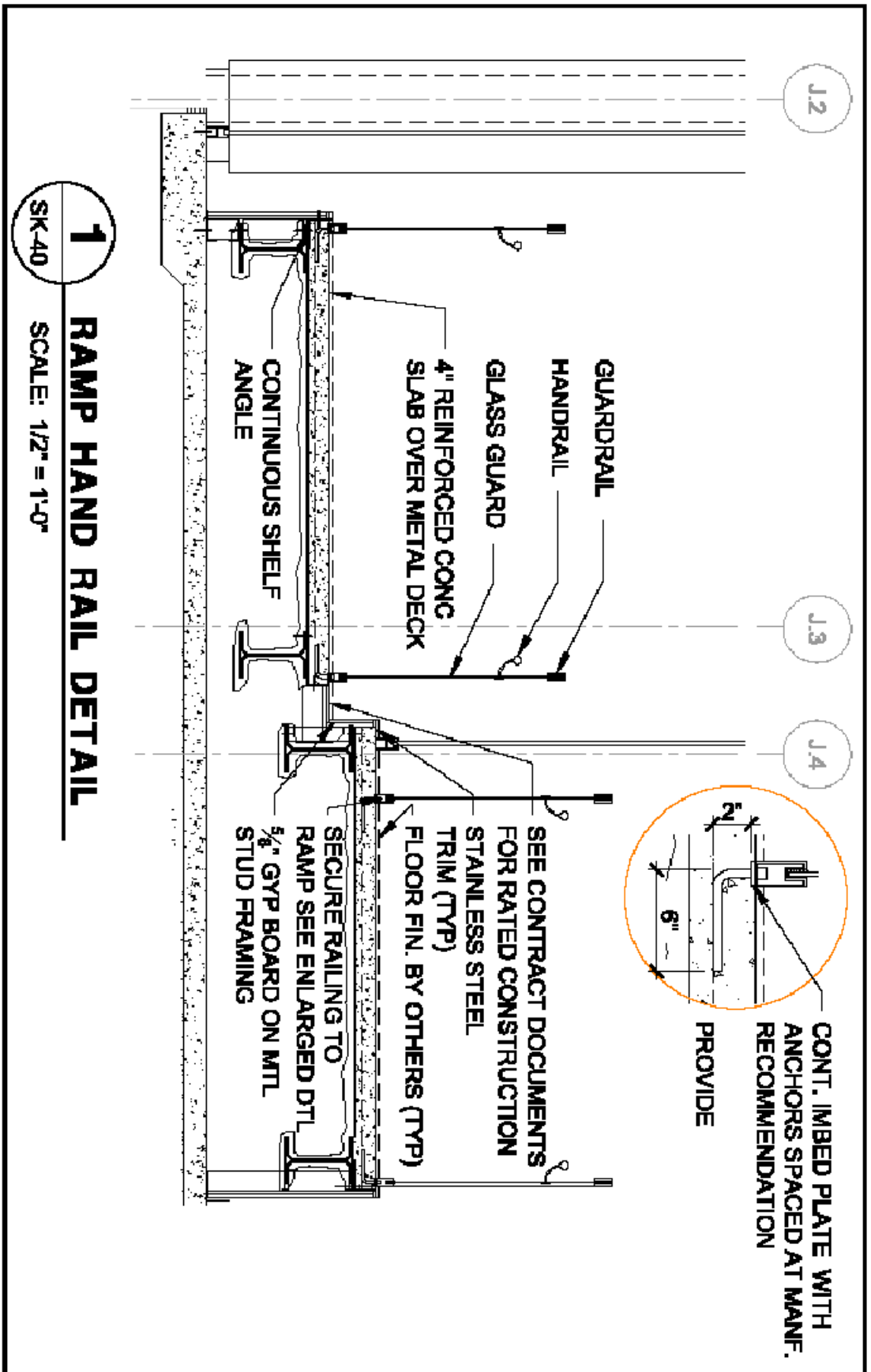


* TILE 26.5" KNEE WALL + 6" SILL ON ONE SIDE, AND 20" WALL W/2" SILL ON OTHER (BTM.6" CARPET BASE) TILE MUST BE INSTALLED BEFORE CARPET. KNEEWALL= SHEETROCK (BY OTHERS)

SEALED BID # 089-0289-CP(DM) ADDENDUM 01 - F4

GATES 2-6 - RAMP - HAND RAIL DETAIL, SCALE: NTS

V:\ARCHIVED\CLIENTS\ST. PETERSBURG, FLA\178006\PHASE ONE CONSTRUCTION\TERMINAL\DRAWINGS\CON.DWG B1017806
 Plotted by: Bailey, Qing A. on 2/19/2008 5:25:38 AM

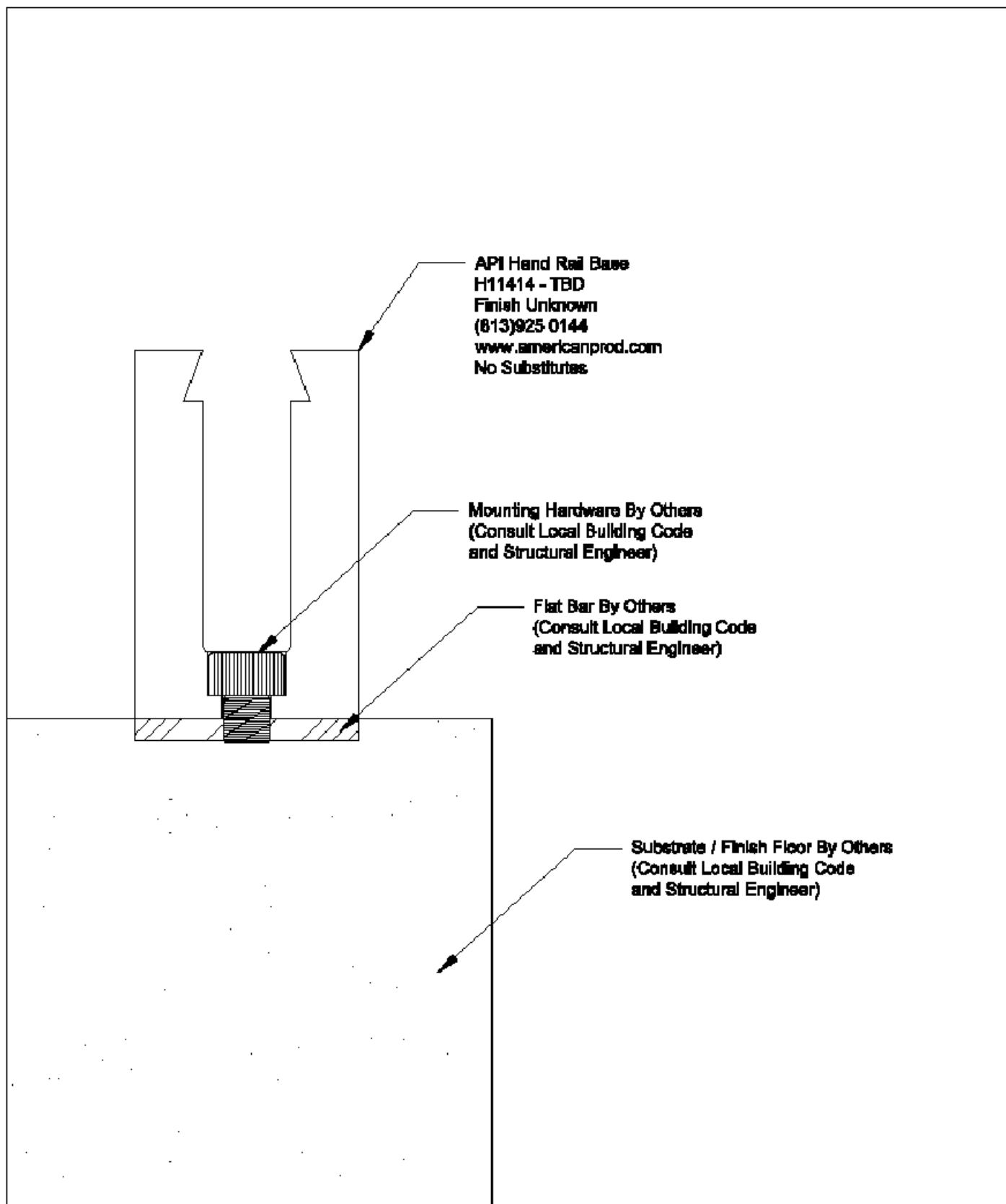



SK-040 FEBRUARY 19, 2008 1/2" = 1'-0"	DESIGN: 09 DRAWING: 03 CHECK:	PROJECT NO.: AR178006.8	THE LPA GROUP
ST. PETERSBURG - CLEARWATER INTERNATIONAL AIRPORT ST. PETERSBURG, CLEARWATER, FLORIDA TERMINAL IMPROVEMENT PROJECT - PHASE 1		RAMP HAND RAIL DETAIL	

SEALED BID # 089-0289-CP(DM)

ADDENDUM 01 - F3

GATES 2-6 - RAMP - HAND RAIL BASE MOUNTING - SCALE: NTS

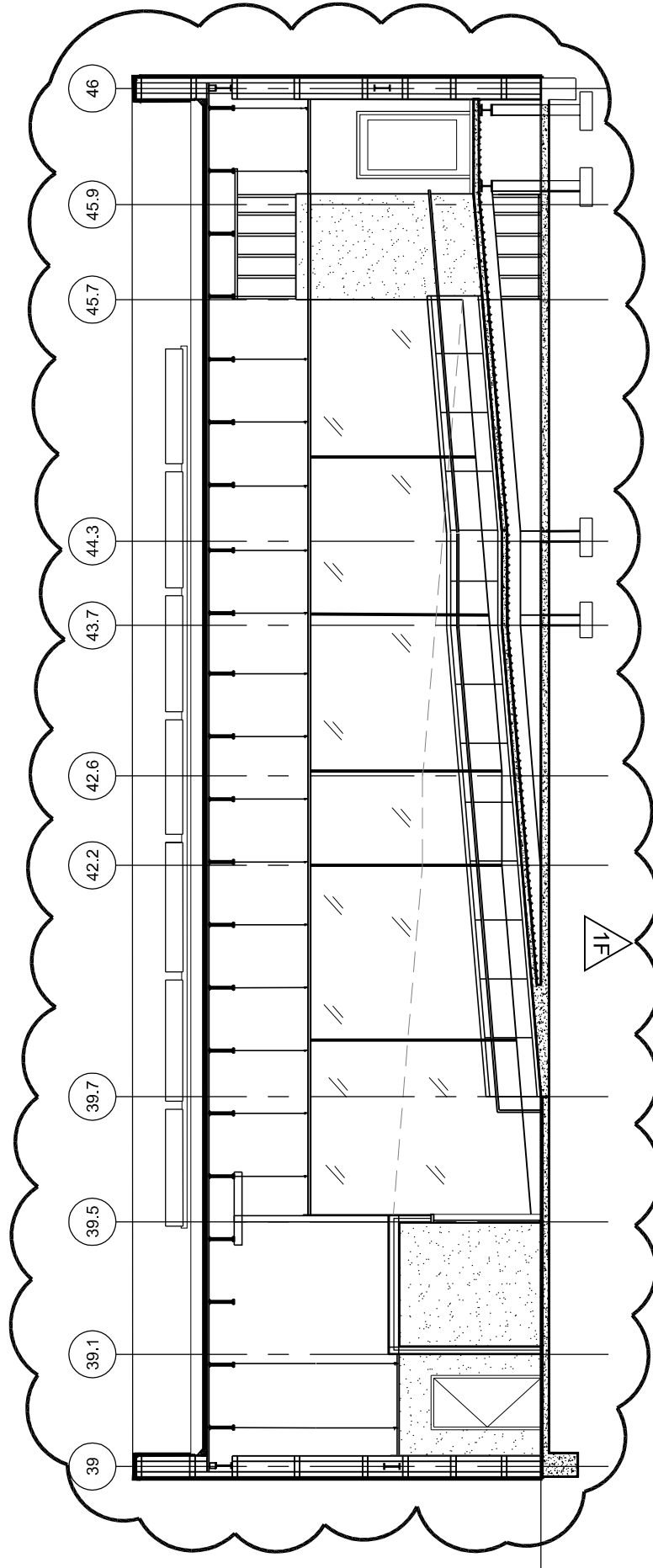


<p>API Recommends that this note appear with Storefront Elevations and Section View Details in your blueprints.</p> <p>Storefront and related materials provided by American Products, Inc. (API). No substitutions without written consent from Store Owner / Architect. API (813) 925 - 0144.</p>		<p>DESCRIPTION: API Hand Rail Base Mounting</p>				<p>AMERICAN PRODUCTS, INC. (API) 12167 W LINDBAUGH AVENUE #326 TAMPA, FL 33626 CONTACT: KERRI BEALS PH: (813)925-0144 / FAX: (813)925-1414 WWW.AMERICANPROD.COM</p>	 <p>AMERICAN PRODUCTS, INC.</p>
		<p>DATE: 02/12/09</p>	<p>DATE: 02/12/09</p>	<p>REVISION: REV 1</p>	<p>REVISION: REV 1</p>		
<p>REVISION: REV 1</p>		<p>REVISION: REV 1</p>		<p>REVISION: REV 1</p>		<p>REVISION: REV 1</p>	
<p>REVISION: REV 1</p>		<p>REVISION: REV 1</p>		<p>REVISION: REV 1</p>		<p>REVISION: REV 1</p>	

SEALED BID # 089-0289-CP(DM)

ADDENDUM 01 - F2

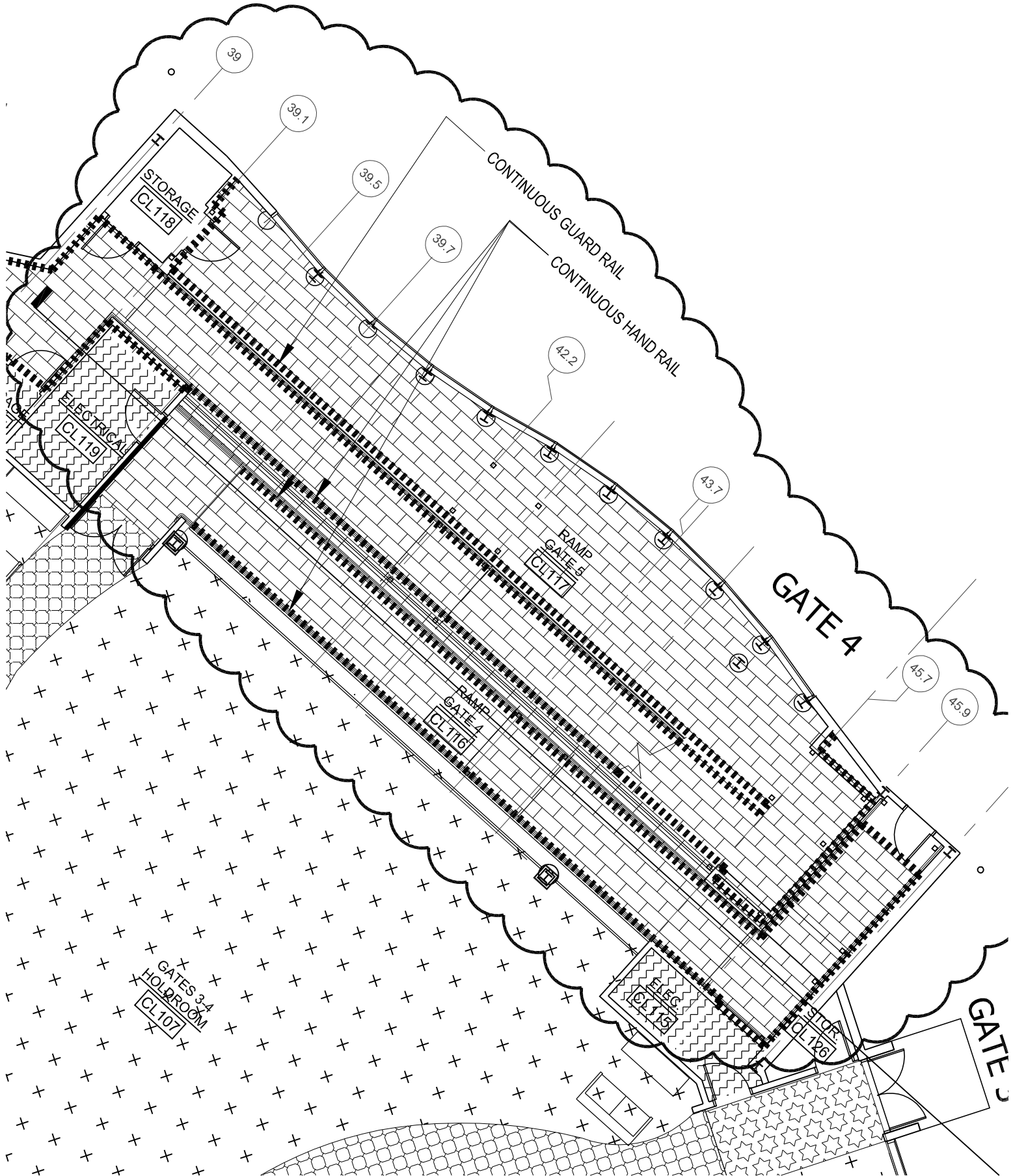
GATES 2-6 - RAMP RAILING & HAND RAIL - CROSS SECTION, SCALE: 3/32"=1'-0"



SEALED BID # 089-0289-CP(DM)

ADDENDUM 01 - F1

GATES 2-6 - RAMP - RAILING & HAND RAIL FLOOR PLAN, SCALE: 3/32"=1'-0"



SEALED BID # 089-0289-CP(DM)

ADDENDUM 01 - E

GENERAL NOTE - ALL PLANS// SCALE : NTS

1E

NOTE: ~~COORDINATE~~

TILE CONTRACTOR IS RESPONSIBLE FOR COORDINATION OF A CONTINUOUS TILE & GROUT PATTERN AT LINE OF TRANSITION AT ALL DOORS TO PERIMETER WALK WAY. IE. CL 100 , TB 100 ETC.

NOTE:

RESTAURANT GATES 2-6 LEVEL 2 IS INCLUDED IN PHASING, CONTRACTOR MUST COORDINATE W/ OWNER!

1E

SEALED BID # 089-0289-CP(DM) ADDENDUM 01 - D2

GATES 2-6 - TERAZZO INSERT DETAIL, SCALE :NTS



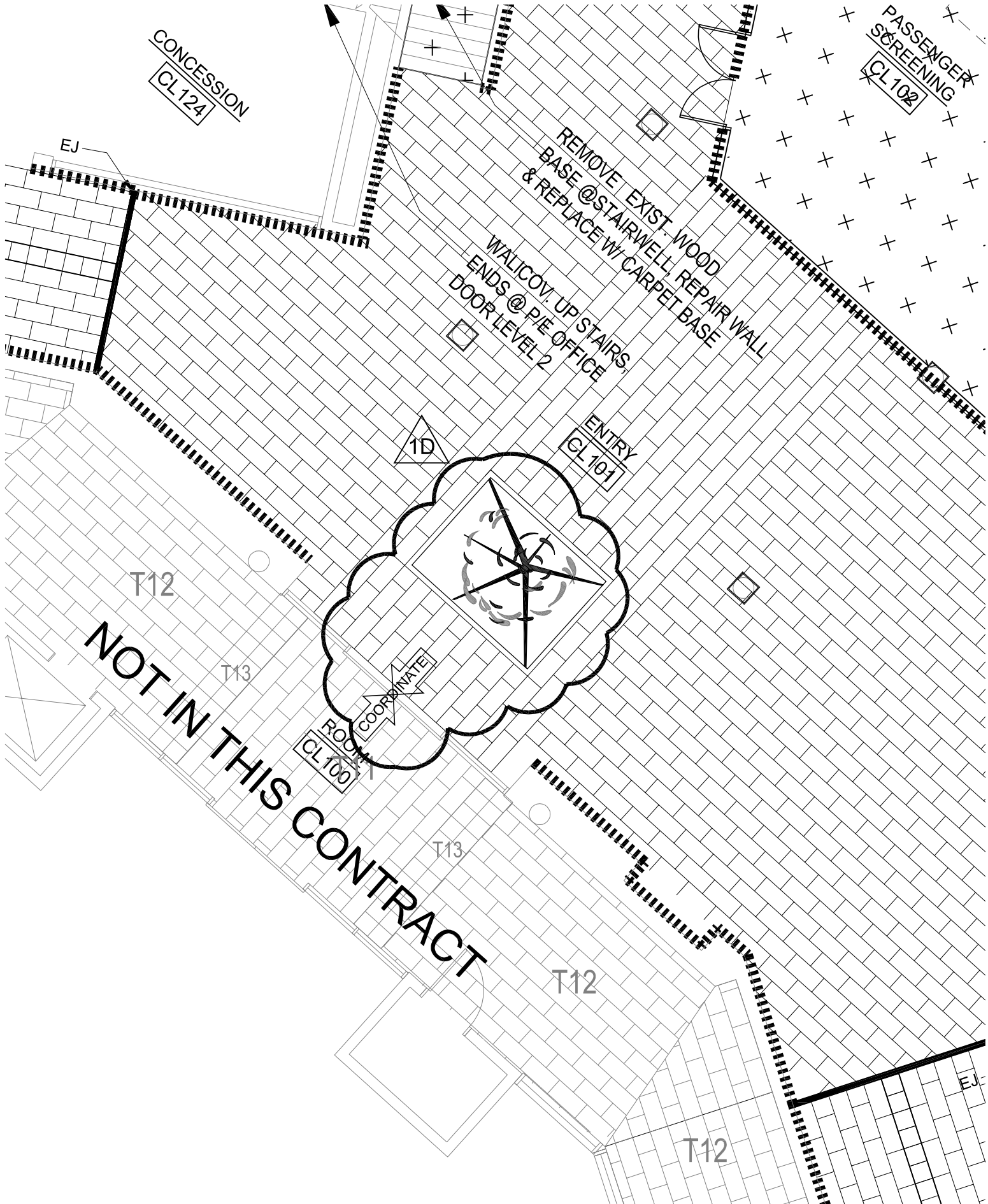
TILE PATTERN LAYOUTS
TERAZZO INSERT 04 SCALE: 1/2"=1'-0"

				<p align="center">TERMINAL IMPROVEMENT PROJECT - TILE</p>		<table border="1"> <tr> <td>NO.</td> <td>DATE</td> <td>DESCRIPTION</td> </tr> <tr> <td> </td> <td> </td> <td> </td> </tr> <tr> <td> </td> <td> </td> <td> </td> </tr> <tr> <td> </td> <td> </td> <td> </td> </tr> </table>	NO.	DATE	DESCRIPTION										<p>TERMINAL IMPROVEMENT PROJECT - TILE</p> <p>MATERIAL SCHEDULE</p>	<p>INS 04</p>
NO.	DATE	DESCRIPTION																		

SEALED BID # 089-0289-CP(DM)

ADDENDUM 01 - D1

GATES 2-6 - TERAZZO INSERT DETAIL, SCALE :1/8" = 1'-0"

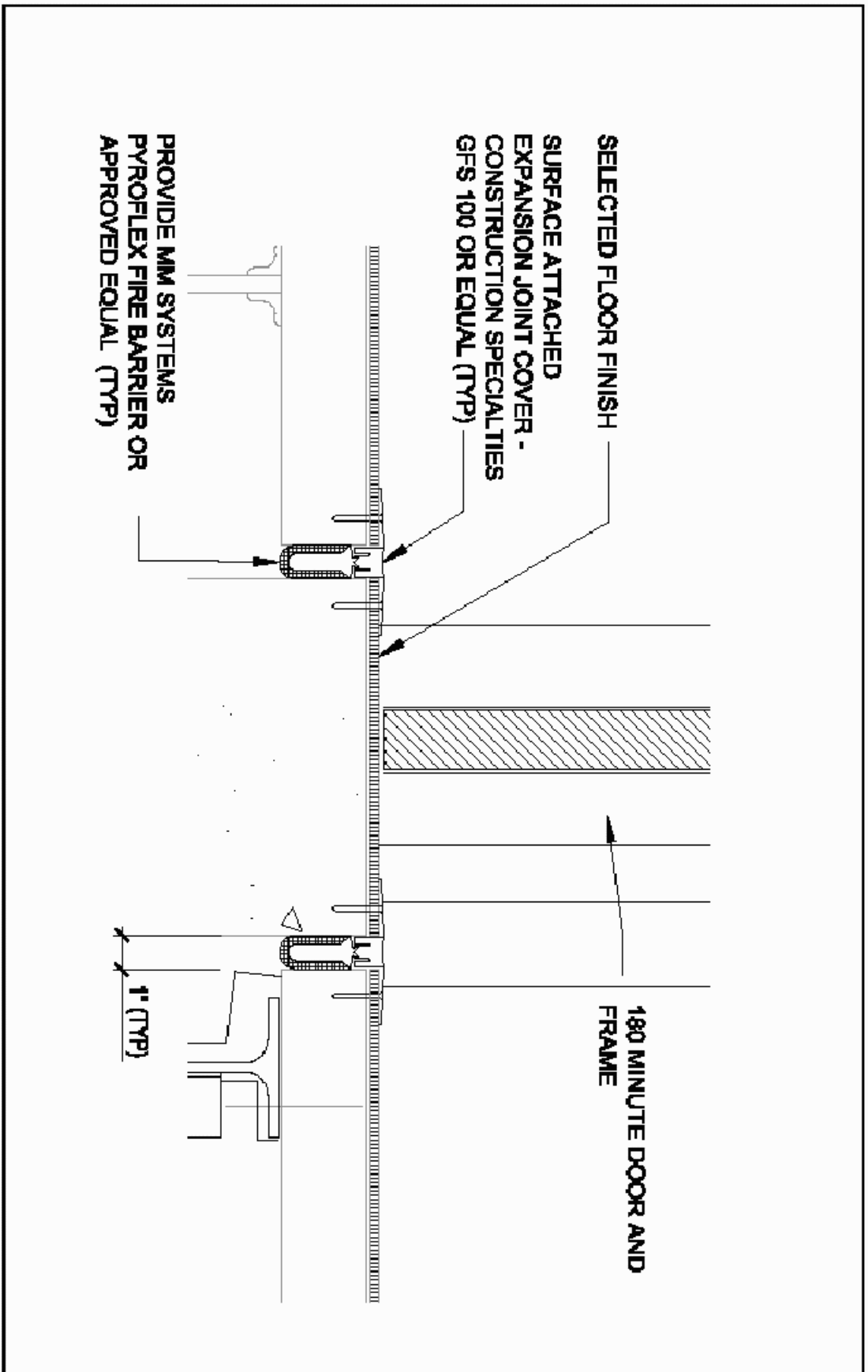


SEALED BID # 089-0289-CP(DM) ADDENDUM 01 - C2

TICKETING A - FIRE WALL DETAIL, SCALE : NTS

PROJECT: TICKETING A - ST. PETERSBURG, FL AIRPORT PHASE ONE CONSTRUCTION TERMINAL CLEARWATER AIRPORT
 Drawn by: Seldin, Qing A. on 04/20/2009 08:21:16 AM

84-49



SECTION REFERENCE A3.03 / REF 150 9K-49		DATE MARCH 9, 2009	
DESIGNER ST. PETERSBURG - CLEARWATER INTERNATIONAL AIRPORT ST. PETERSBURG-CLEARWATER, FLORIDA TERMINAL IMPROVEMENT PROJECT - PHASE 1	CHECKER BB	PROJECT NO. AR-178006.8	DATE BB
EXPANSION JOINT DETAIL AT 4 HOUR WALL		THE LPA GROUP DRAWING NOT TO SCALE	

SEALED BID # 089-0289-CP(DM)

ADDENDUM 01 - C1

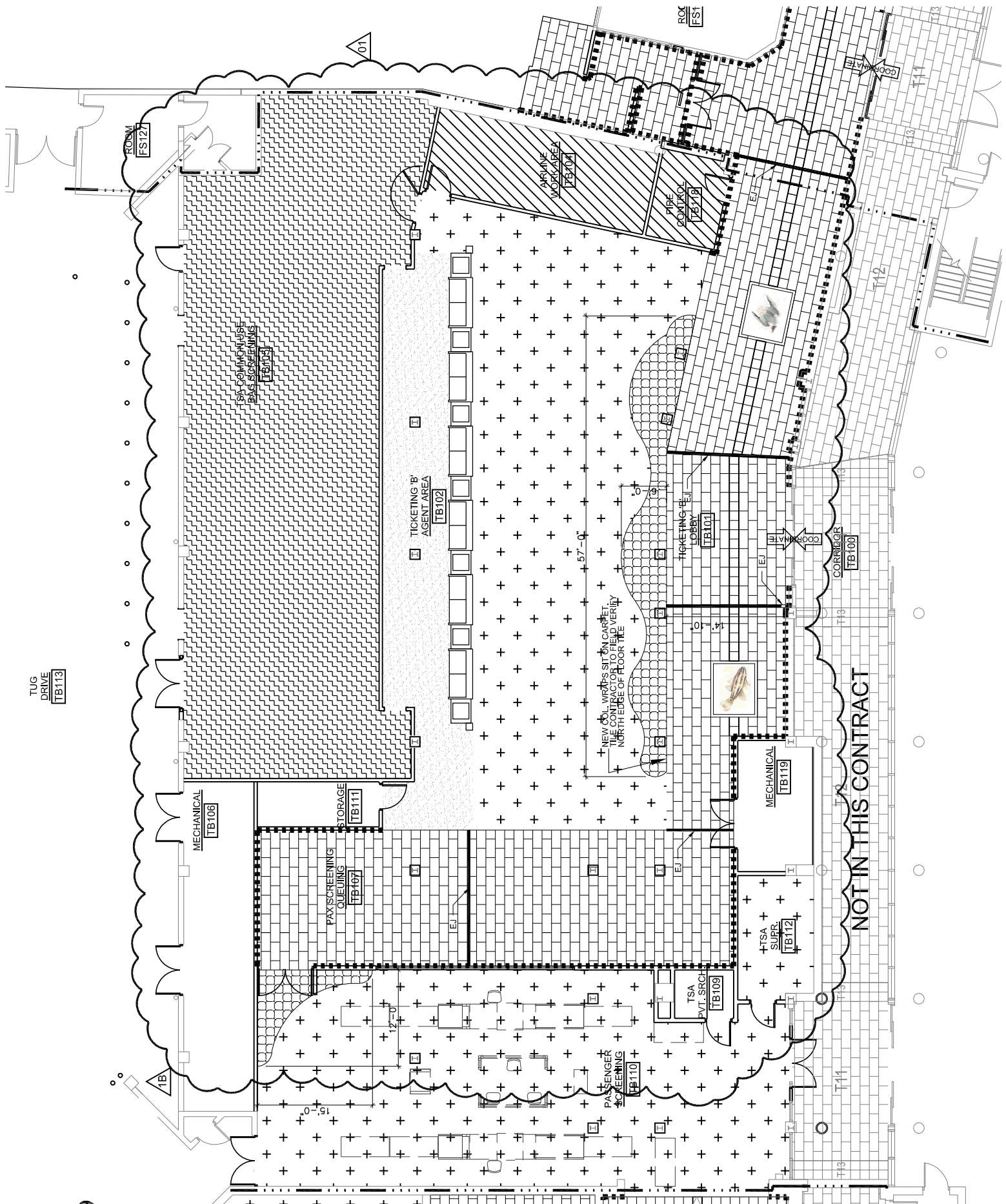
TICKETING A- PLAN REVISION FIRE WALL 118" = 1'-0"



SEALED BID # 089-0289-CP(DM)

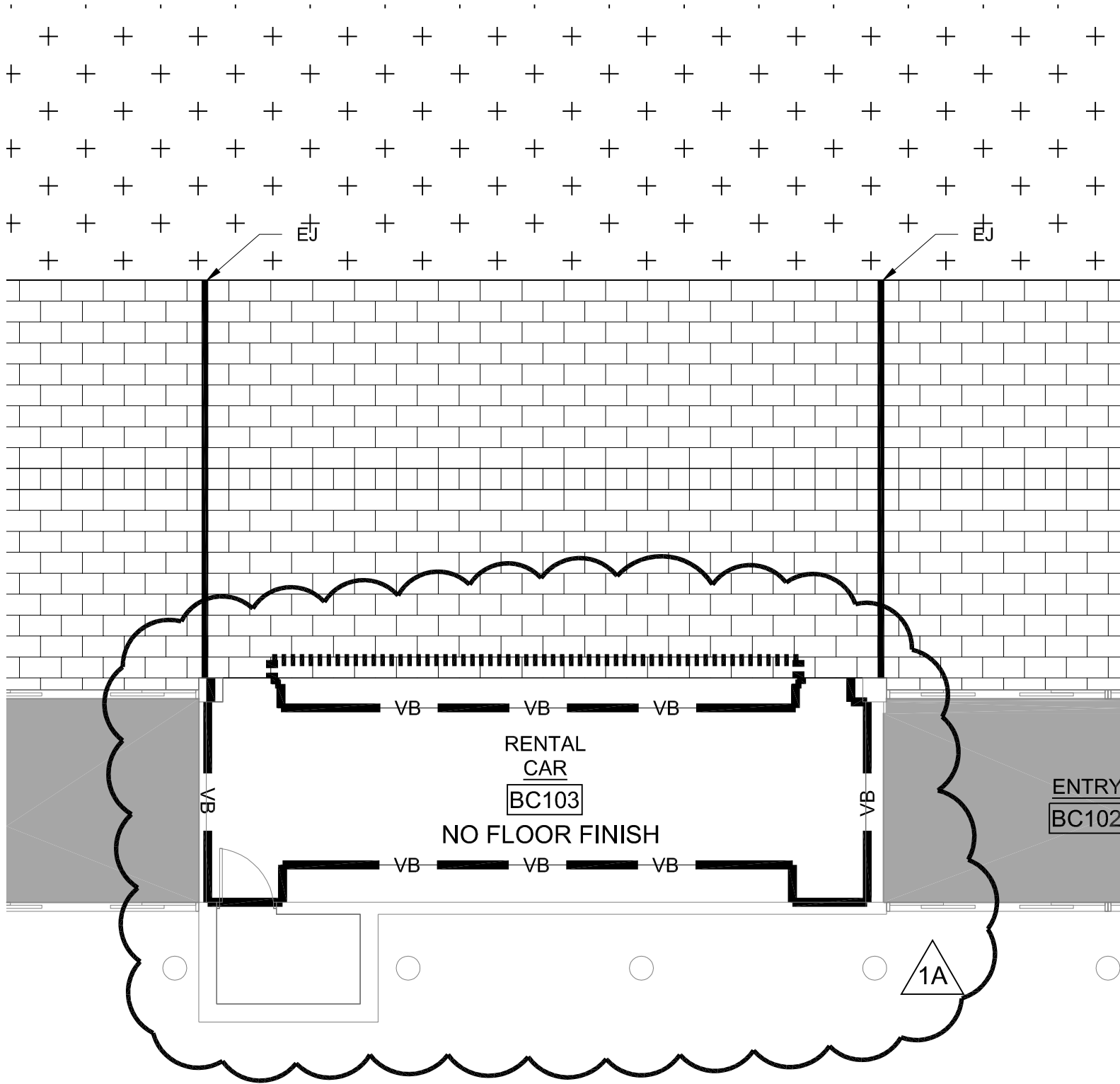
ADDENDUM 01 - B

TICKETING B - PLAN REVISION. ROOM CHANGES || SCALE : 1/16" = 1'-0"



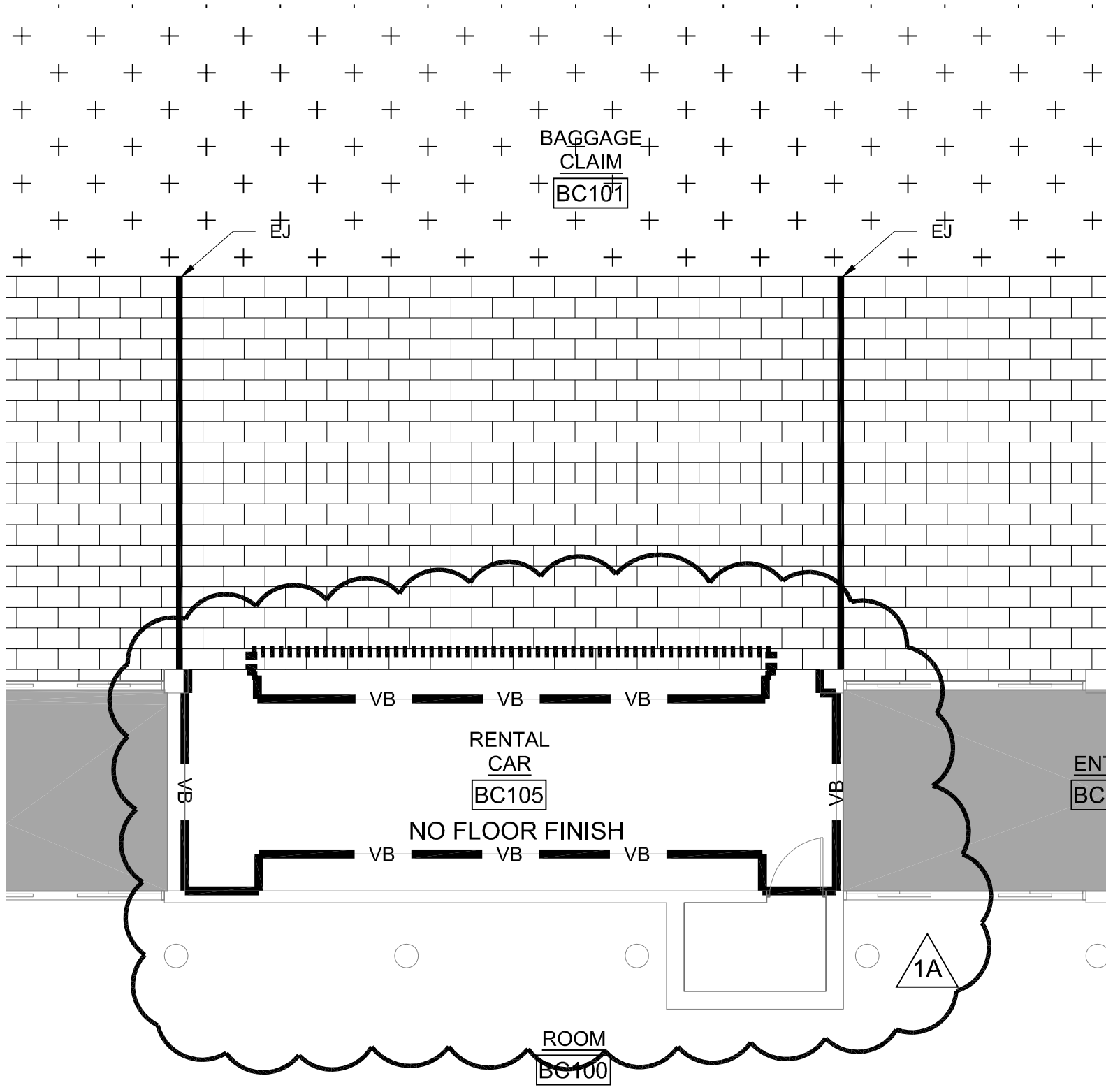
SEALED BID # 089-0289-CP(DM)
ADDENDUM 01 - A3

BAGGAGE CLAIM ROOM, BC 103 - FLOOR FINISH || SCALE : 1/8" = 1'-0"



SEALED BID # 089-0289-CP(DM) ADDENDUM 01 - A2

BAGGAGE CLAIM, ROOM BC 105 - FLOOR FINISH // SCALE : 1/8" = 1'-0"



SEALED BID # 089-0289-CP(DM) ADDENDUM 01 - A1

BAGGAGE CLAIM, ROOM BC 107 - FLOOR FINISH || SCALE : 1/8" = 1'-0"

