

LEGEND -FLOORING FINISHES

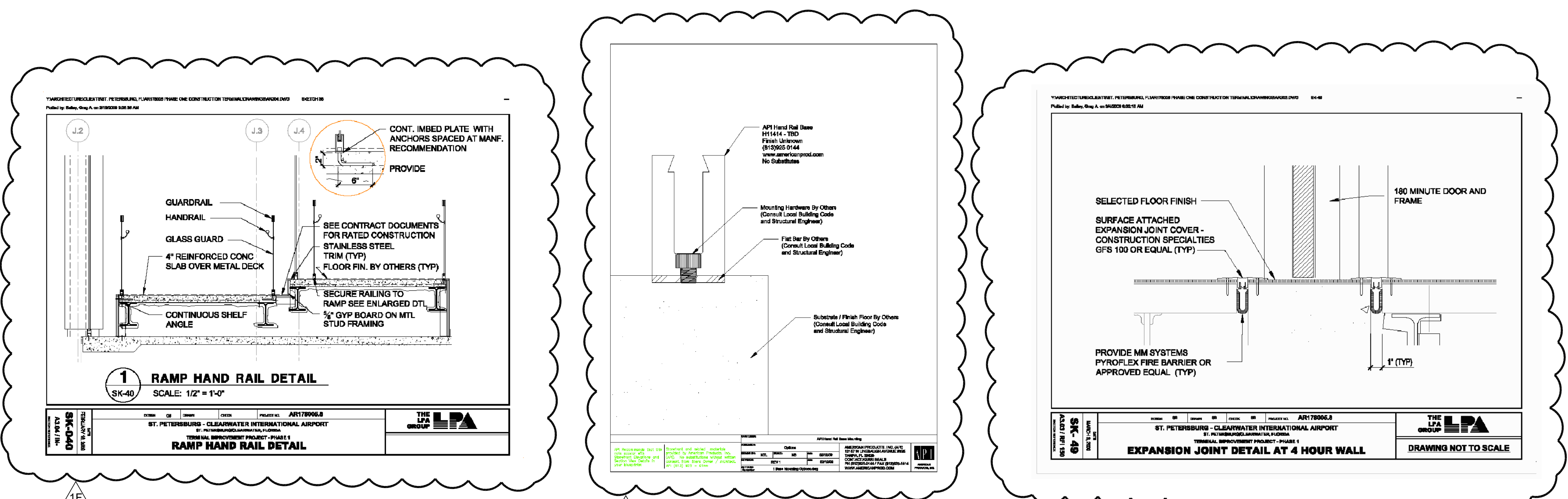
- TILE**
DEMO: 1.TILE CONTRACTOR IS RESPONSIBLE FOR THE DEMO OF ANY EXISTING TILE OR OLD CARPET WHERE NEW TILE IS INDICATED. 2.DEMO OF THE CARPET WHERE NEW CARPET IS INDICATED WILL BE REMOVED BY THE NEW CARPET CONTRACTOR (NOT IN THIS CONTRACT). 3. "FEATHER UP" SUB FLOOR ANYWHERE CARPET MEETS NEW TILE USING VINYL LEVELING MATERIAL INDICATED IN SPECIFICATION BOOKLET (NO REDUCER STRIPS BETWEEN THE 2 MATERIALS!).
- TILE 1:** VS77 14X28 ONE COLOR SEE SPEC.
 - TILE 2:** VS88 14X14 ONE COLOR SEE SPEC.
 - TILE 3 - BASE:** VS77 7X14 TILE BASE, ONE COLOR SEE 02I.1.01 & SPEC.
 - TILE 4:** AV111/AV112 18X18 ONE COLOR SEE SPEC.
 - TILE 5 - BASE:** 18X18 ONE COLOR (SAME AS TILE#4) CUT INTO 9X18 BASE WHERE TILE #4 IS SPEC.
 - TILE 6 - WAINSCOTT:** VS77 7X14 TILE BASE, ONE COLOR, 3 TILES HIGH (42") SEE 02I.1.01 FOR CAP DETAIL & SPEC.
- NOTE:** IN AREAS RECEIVING TILES #1 & #2 USE 7X14 TILE BASE(TILE 3), SEE SPEC.; IN AREAS RECEIVING TILE #4 , USE TILE 5 FOR BASE, SEE SPEC.

- EXISTING TILE :** TO REMAIN, NOT INCLUDED IN THIS CONTRACT (N.I.C.).
- NO WORK**
- TERRAZZO INSERTS** INCLUDED IN THIS CONTRACT
- TERRAZZO FLOORING** BY OTHERS

CARPETS:
 ALL NEW CARPETS BY OTHERS (SOME REMOVAL OF OLD, IN NEW TILE AREAS BY THE CONTRACTOR)

- CARPET 1 :** WOVEN BROADLOOM; 6'-0" X 6'-0" REPEAT 12'-0" MATERIAL. (BY OTHERS)
- CARPET 2 :** WOVEN BROADLOOM; NO REPEAT 12'-0" MATERIAL. ACCENT CARPET INLAYS TO BE PRE DRAWN IN THE FIELD AND APPROVED BY PIE INTERIOR DESIGNER. (BY OTHERS)
- CARPET 3:** TUFTED BROADLOOM; (BEHIND NOTED COUNTERS), (BY OTHERS)
- CARPET 4 WALK-OFF AREAS:** LEE'S "STEP-UP", 6'-0" WIDE ROLL MATERIAL, 5/32", 38OZ., # DD769, COLOR 508 BLACK (BY OTHERS)
- CARPET 5 WALK-OFF AREAS:** USING EXISTING PAWLING PRO-TEK ALUMINUM TREADS, REPLACE EXISTING BLUE CARPET INSERTS W/ PRO-TEK COLOR: BLACK; HEAVY DUTY CARPET STRIPS, REPAIR OR REPLACE ALUMINUM FRAMES AND/OR DAMAGED TREADS AS NEEDED (REPLACE ANY BENT OR DAMAGED TREAD OR FRAME)" (BY OTHERS)
- VINYL COMPOSITE TILE (VCT):** GENERAL CONTRACTOR TO PROVIDE VCT IN IT'S ENTIRETY. AREAS RECEIVING VCT SHALL RECEIVE VINYL COVE BASE. (BY OTHERS)

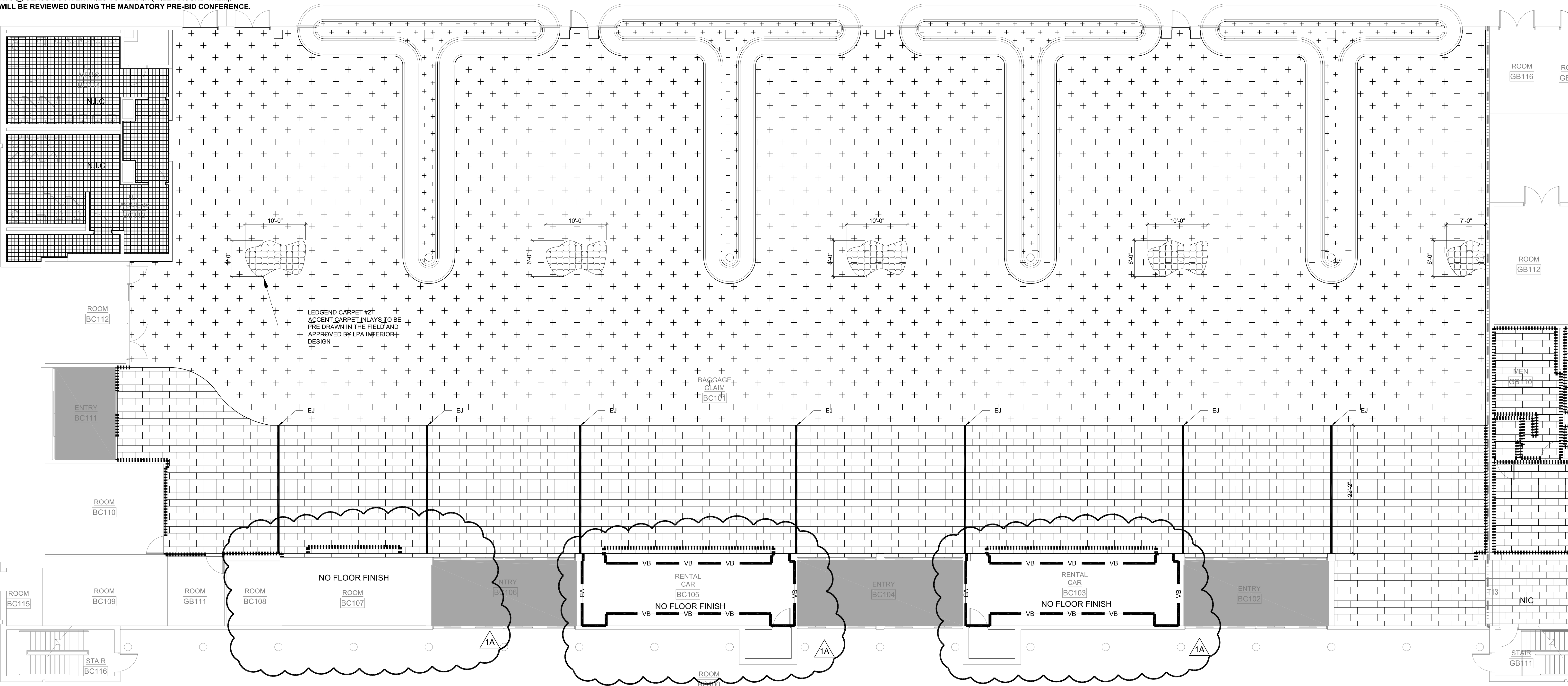
EXISTING PRESSURE MATS @ GLASS DOOR ENTRIES TO REMAIN (TILE AROUND THEM). LOCATIONS OF THESE WILL BE REVIEWED DURING THE MANDATORY PRE-BID CONFERENCE.



04 DETAIL FOR I.1.02- RAMP
ADDENDUM 01 - F4
 A.1.06 SCALE: NTS

03 DETAIL FOR I.1.02- RAMP
ADDENDUM 01 - F3
 A.1.06 SCALE: NTS

02 TYPICAL DETAIL
ADDENDUM 01 - C2
 A.1.06 SCALE: NTS



PLAN NORTH
1 FLOOR PLAN
BAGGAGE CLAIM
 A.0.01 SCALE: 1/8" = 1'-0"

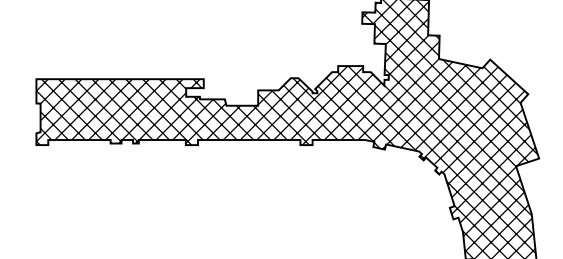


THE LPA GROUP
 ENGINEERS ARCHITECTS PLANNERS
 700 HUGER STREET
 COLUMBIA, SOUTH CAROLINA 29201
 POST OFFICE BOX 5802
 COLUMBIA, SOUTH CAROLINA 29250-5805
 Phone: 803/254-2211 Fax: 803/779-0482
 DENNIS J. WHEELER, FLORIDA ARCHITECT LICENSE # 11969
 LPA GROUP INCORPORATED, FLORIDA LICENSE # A0000054

KTD Inc.
 KELLY TAAFFE DESIGN
 Lic# ID 0002289
 FL# 13 0001146
 Kelly@kellytaaffedesign.com
 Tel.: 813.685.5049
 Fax: 813.685.2571

TERMINAL IMPROVEMENT PROJECT - TILE

KEY PLAN



REVISIONS

No.	Description	Date	By
01	ADDENDUM #01 - RE BID		
	SEAL BID # 089-0289-CP(DM)	04/03/09	SB

Designed by: _____ Drawn by: _____ Checked by: _____

TERMINAL IMPROVEMENT PROJECT - TILE

FLOOR PLAN FINISHES

LPA Project Number: **AR178005.8** FAA AIP Project Number:
 Date: **04.20.2009** Division:
 Drawing Number:

I. 1.06