

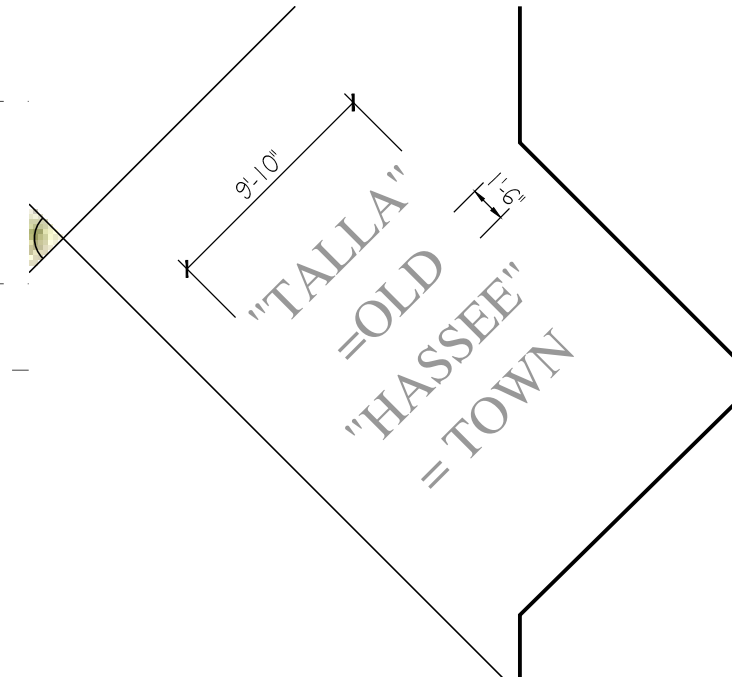
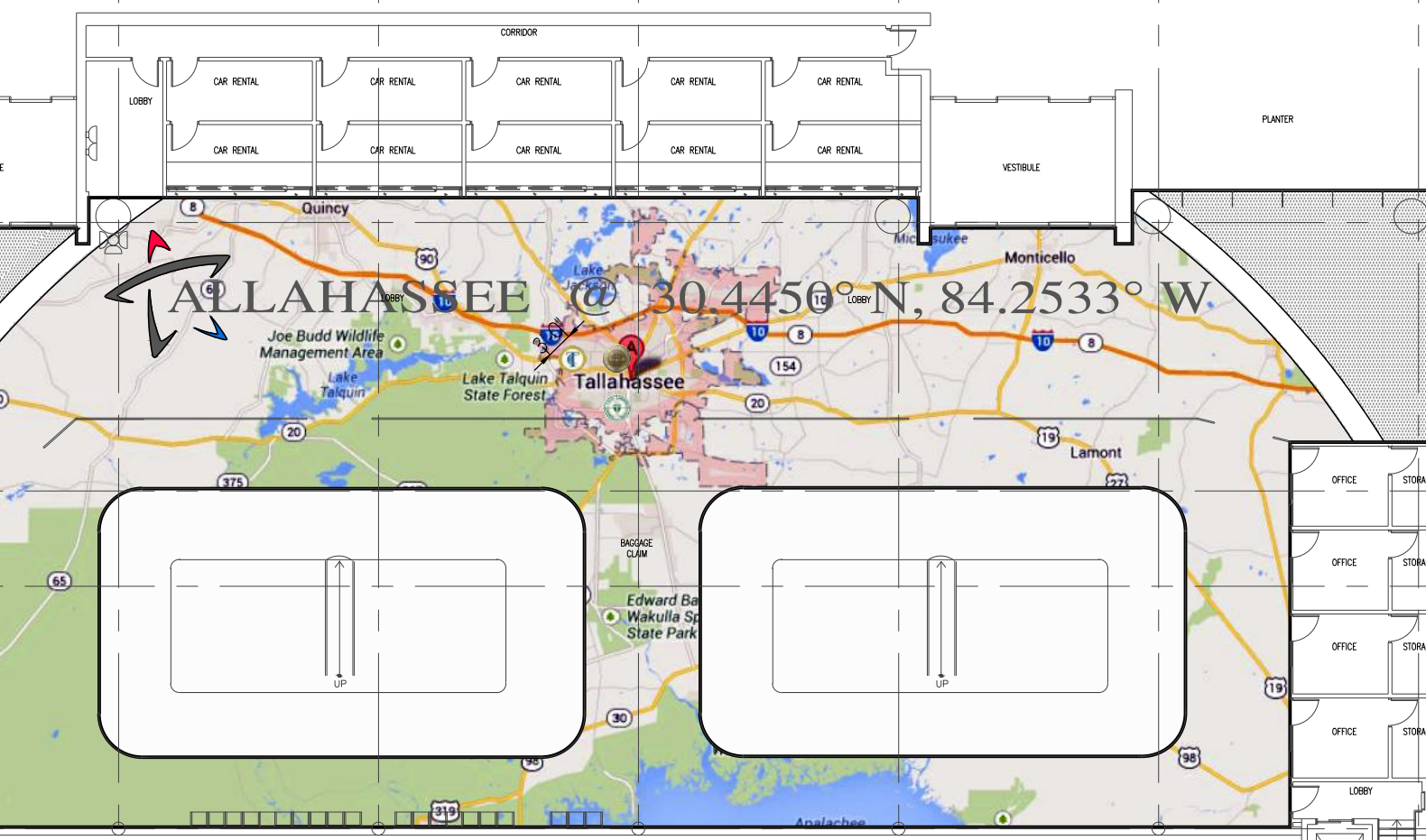
2 ENLARGED INSERT  
A120 SCALE: 3/32" = 1'-0"



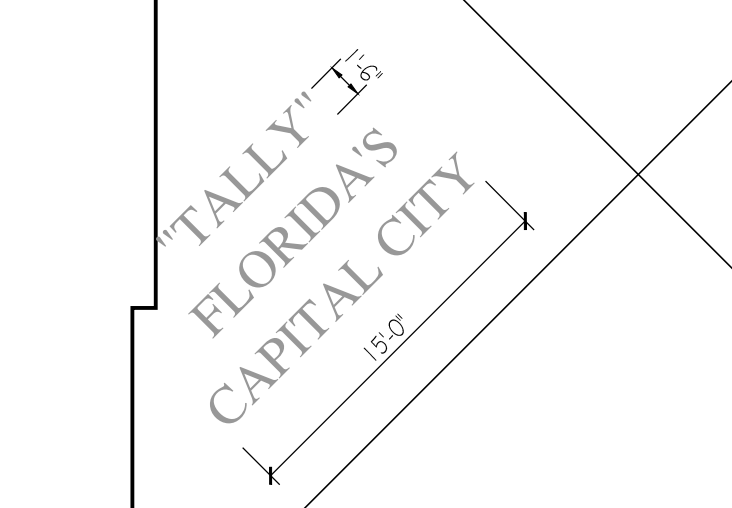
3 ENLARGED INSERT  
A120 SCALE: 3/32" = 1'-0"



1 OVERALL SECOND FLOOR PLAN  
A120 SCALE: 1" = 20'-0"



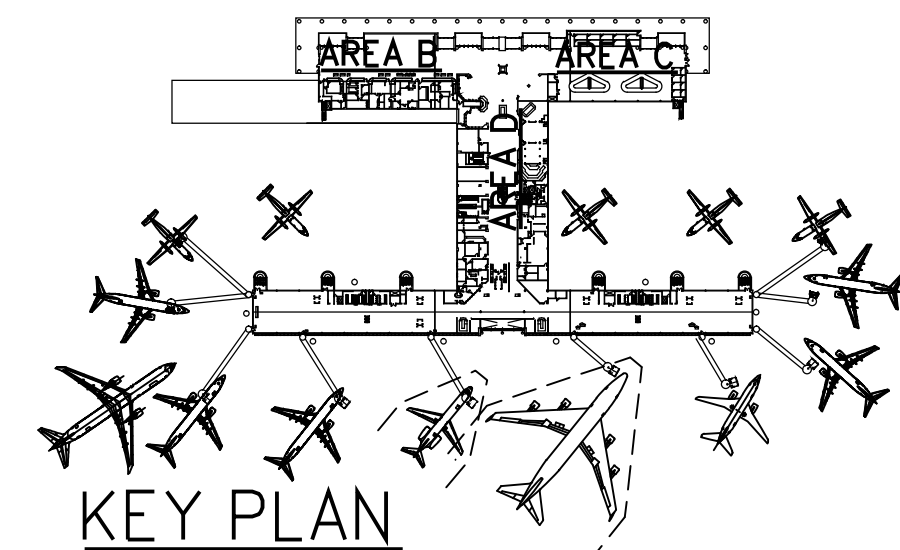
5 OLD TOWN  
A120 SCALE: 1/8" = 1'-0"



6 CAPITAL CITY  
A120 SCALE: 1/8" = 1'-0"



4 ENLARGED INSERT  
A120 SCALE: 3/16" = 1'-0"



KEY PLAN

NOT FOR CONSTRUCTION

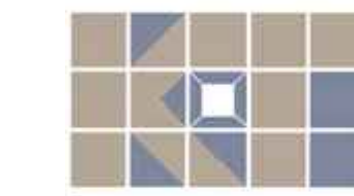
**RS&H**

10748 Deerwood Park Blvd South  
Jacksonville, Florida 32256  
904-256-2500 FAX 904-256-2502  
www.rsandh.com  
FL Lic# 0001888 - E0005620 - LC0000210

**TALLAHASSEE**  
REGIONAL AIRPORT  
TALLAHASSEE, FLORIDA

TALLAHASSEE  
REGIONAL AIRPORT

TALLAHASSEE, FLORIDA



**KTD, Inc.**  
*Design*  
KELLY TAAFFE DESIGN

Lic# ID 0002289  
FL# 13 0001146  
Kelly@kellytaaffedesign.com  
Tel: 813.695.5049  
Fax: 813.805.2371

IN-LINE  
BAGGAGE  
HANDLING  
SYSTEM

REVISIONS		
NO.	DESCRIPTION	DATE

DATE ISSUED: JULY 23, 2013  
REVIEWED BY:  
DRAWN BY:  
DESIGNED BY:

AEP PROJECT NUMBER  
201-2494-000

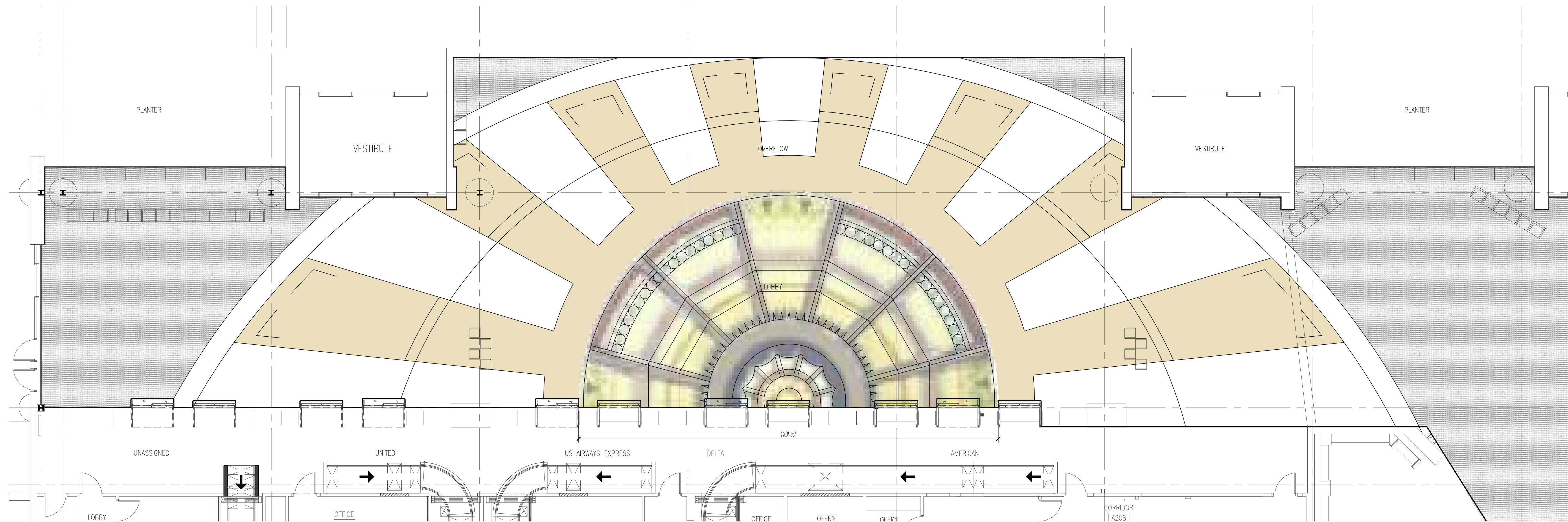
© 2012 REYNOLDS, SMITH AND HILLS, INC.

SHEET TITLE  
**OVERALL  
SECOND FLOOR  
TZO LAYOUT  
FLOOR FINISHES**

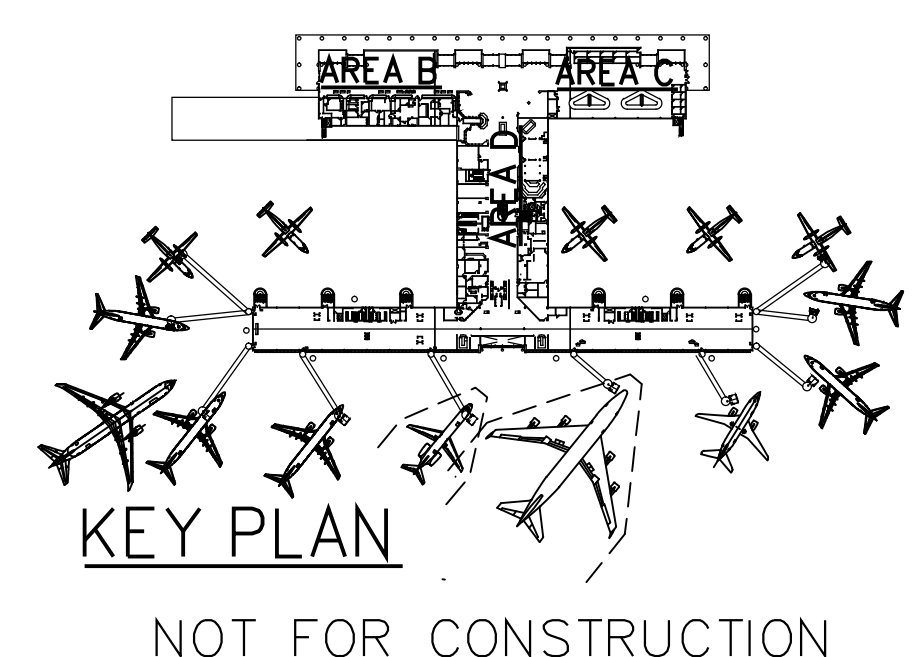
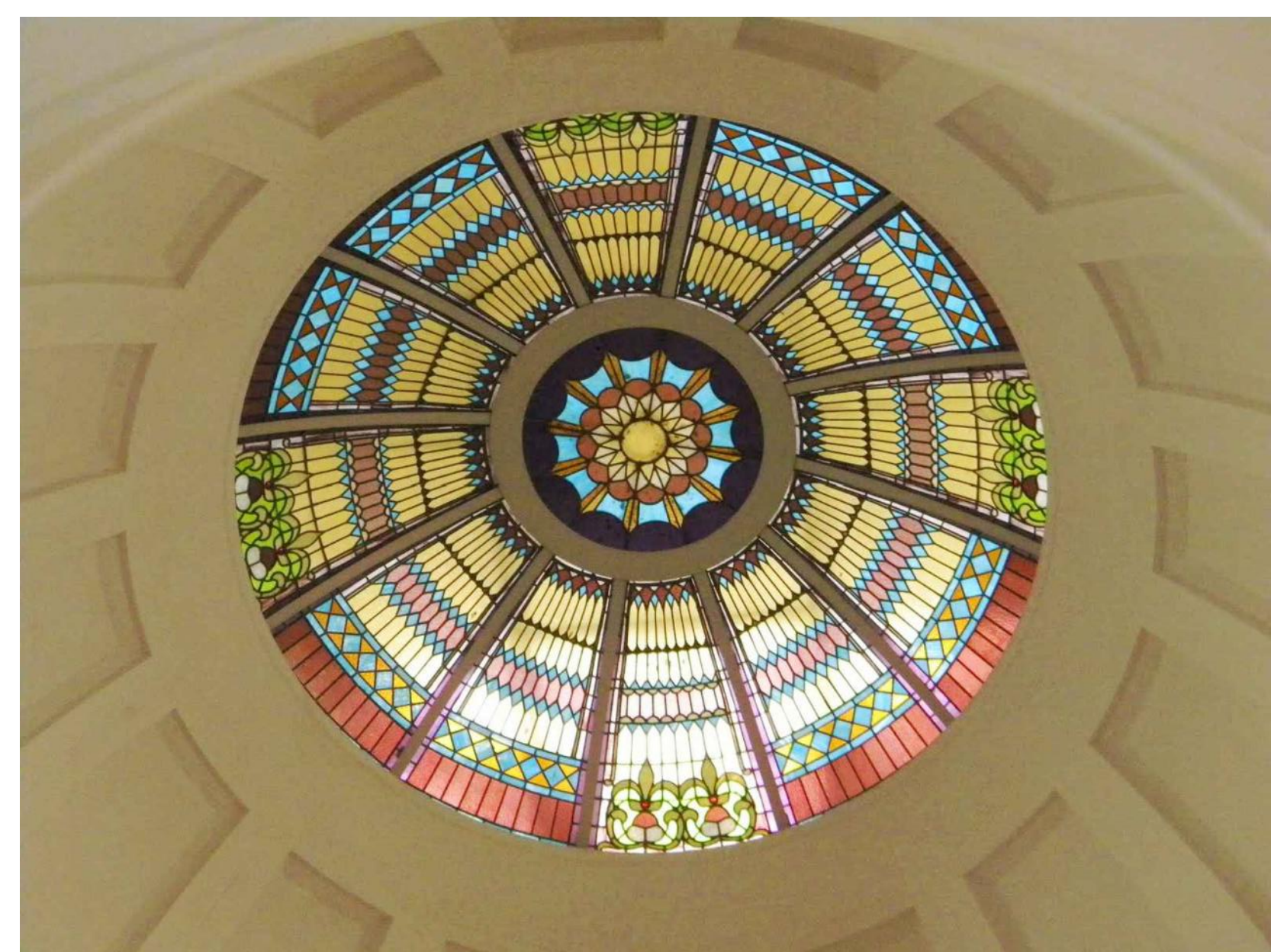
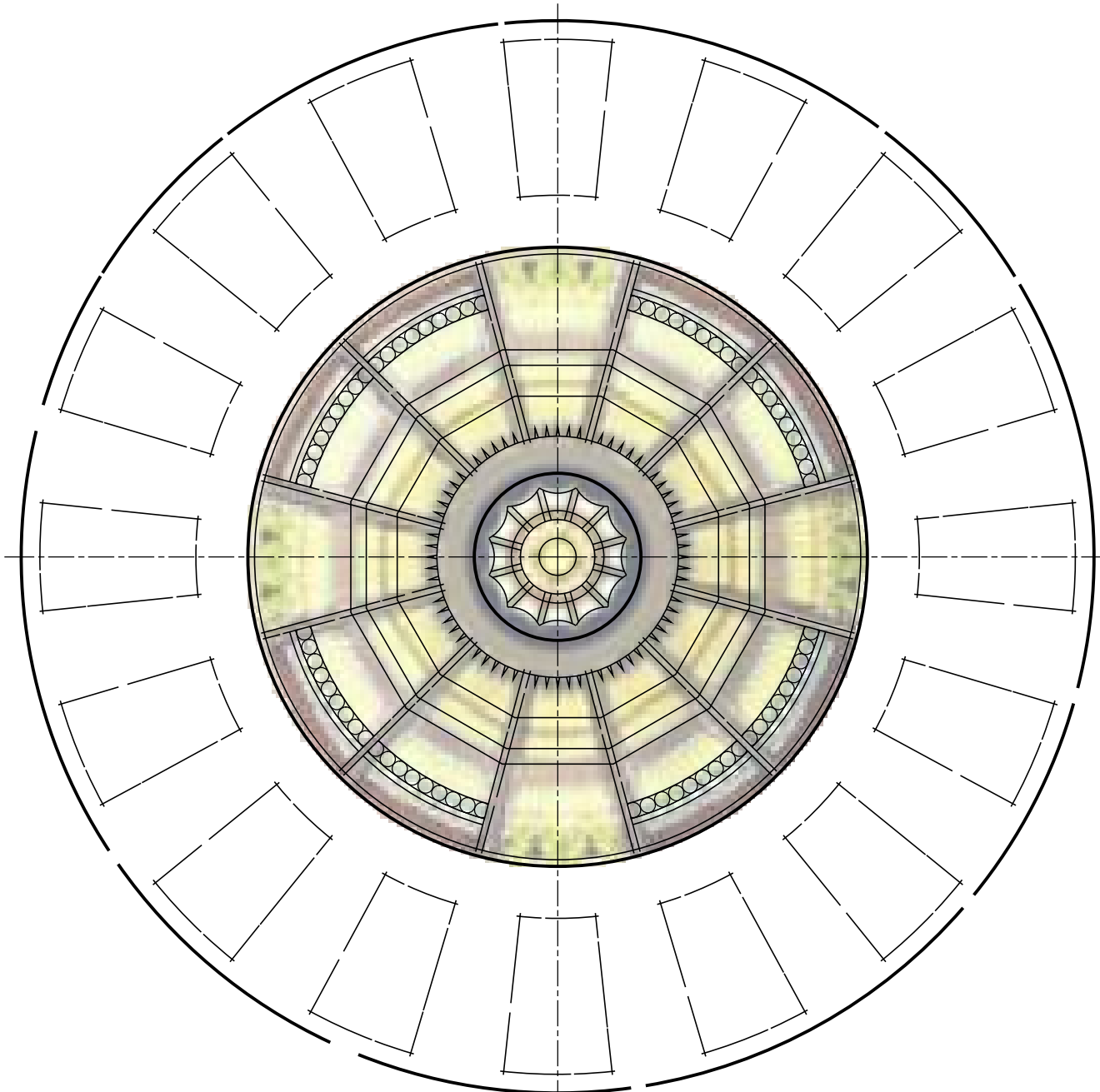
SHEET NUMBER

**INT-120**

# "TALLY" FLORIDA'S CAPITAL CITY



↑  
 1 SECOND FLOOR PLAN AREA B  
 A120 SCALE: 1/8" = 1'-0"



**RS&H**

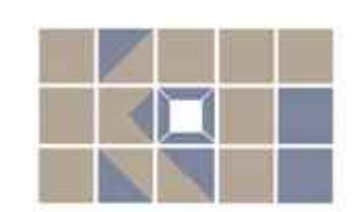
10748 Deereood Park Blvd South  
 Jacksonville, Florida 32256  
 904-256-2500 FAX 904-256-2502  
 www.rsnhd.com  
 FL Cert. Nos. AKC001886 + EB0056620 + LC0000210

**TALLAHASSEE**  
 REGIONAL AIRPORT

TALLAHASSEE, FLORIDA

TALLAHASSEE  
 REGIONAL AIRPORT

TALLAHASSEE, FLORIDA



**KTD Inc.**  
*Design*  
 KELLY TAAFFE DESIGN

Lic# ID 0002289  
 FL# 13 0001146  
 Kelly@kellytaaffedesign.com  
 Tel: 813.695.5049  
 Fax: 813.805.2371

IN-LINE  
 BAGGAGE  
 HANDLING  
 SYSTEM

REVISIONS

NO.	DESCRIPTION	DATE

DATE ISSUED: JULY 23, 2013  
 REVIEWED BY:  
 DRAWN BY:  
 DESIGNED BY:

AEP PROJECT NUMBER  
 201-2494-000

© 2012 REYNOLDS, SMITH AND HILLS INC.

SHEET TITLE  
**SECOND FLOOR  
 PLAN AREA B  
 FLOOR FINISHES**

SHEET NUMBER

INT-121

"TALLY" FLORIDA'S CAPITAL CITY



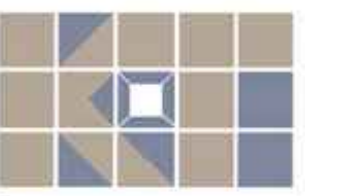
10748 Deerwood Park Blvd South  
Jacksonville, Florida 32256  
904-256-2500 FAX 904-256-2502  
www.rsandh.com  
FL Lic# 180000088 - EB0005620 - LC0000210



TALLAHASSEE, FLORIDA

TALLAHASSEE REGIONAL AIRPORT

TALLAHASSEE, FLORIDA



KTD Inc.  
*Design*  
KELLY TAAFFE DESIGN

Lic# ID 0002289  
FL# 13 0001146  
Kelly@kellytaaffedesign.com  
Tel: 813.695.5049  
Fax: 813.805.2371

IN-LINE  
BAGGAGE  
HANDLING  
SYSTEM

REVISIONS

NO.	DESCRIPTION	DATE

DATE ISSUED: JULY 23, 2013

REVIEWED BY:

DRAWN BY:

DESIGNED BY:

AEP PROJECT NUMBER  
201-2494-000

© 2012 REYNOLDS, SMITH AND HILLS INC.

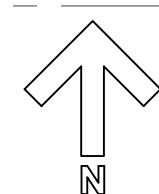
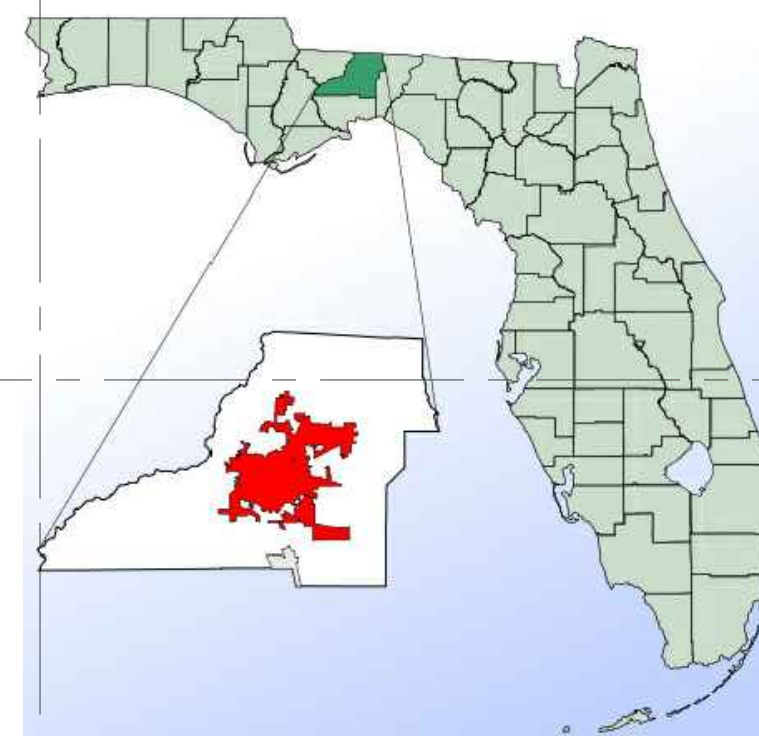
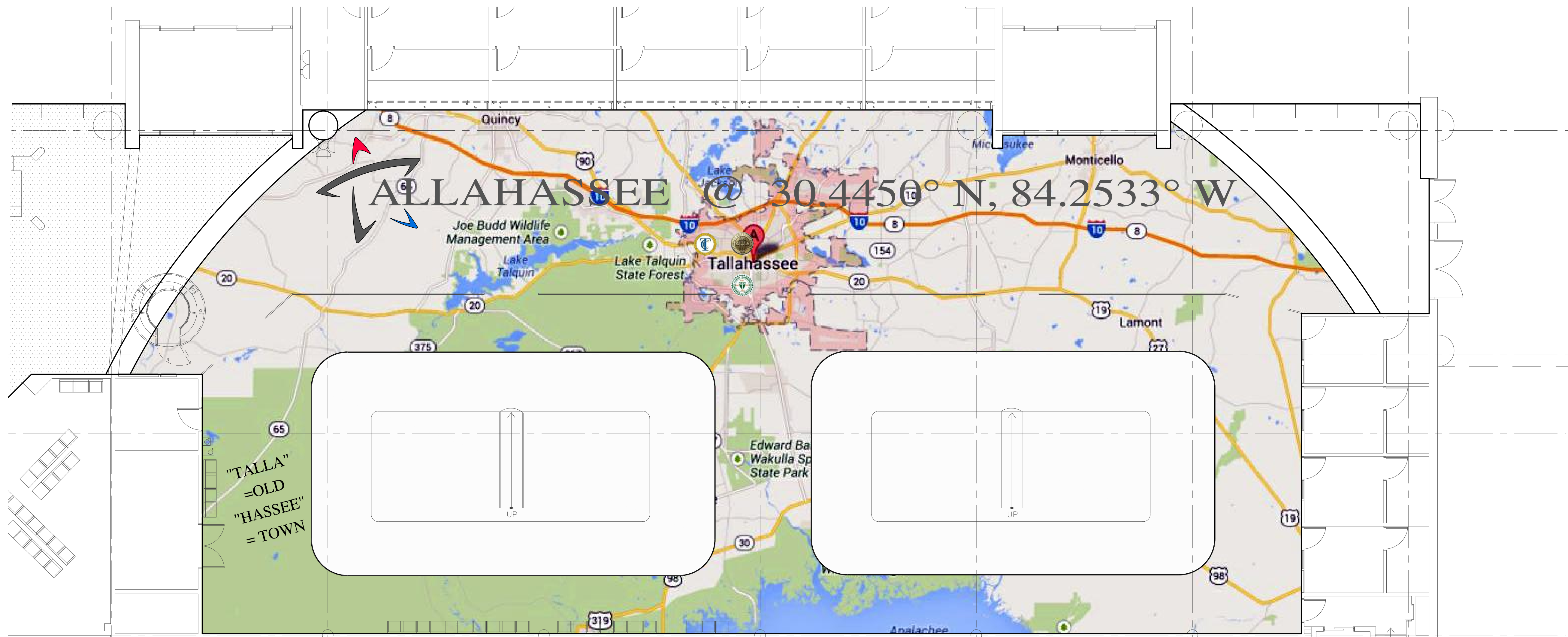
SHEET TITLE

SECOND FLOOR  
PLAN AREA C  
FLOOR FINISHES

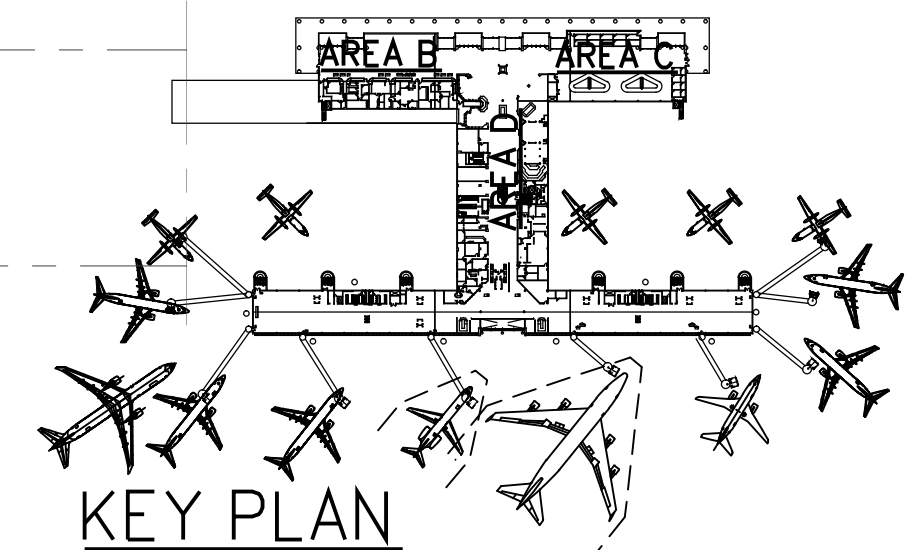
SHEET NUMBER

INT-122

CONCEPT 1&2



SECOND FLOOR PLAN AREA C  
SCALE: 1/8" = 1'-0"



KEY PLAN

NOT FOR CONSTRUCTION

# "TALLY" FLORIDA'S CAPITAL CITY



*Kelly Taafe Design*  
KELLY TAAFFE DESIGN

Lic# ID 0002289  
FL# 13 0001146  
kelly@kellytaaffedesign.com  
Tel: 813.695.5049  
Fax: 813.805.2371

IN-LINE  
BAGGAGE  
HANDLING  
SYSTEM

REVISIONS

NO.	DESCRIPTION	DATE

DATE ISSUED: JULY 23, 2013

REVIEWED BY:

DRAWN BY:

DESIGNED BY:

AEP PROJECT NUMBER  
201-2494-000

© 2012 REYNOLDS, SMITH AND HILLS INC.

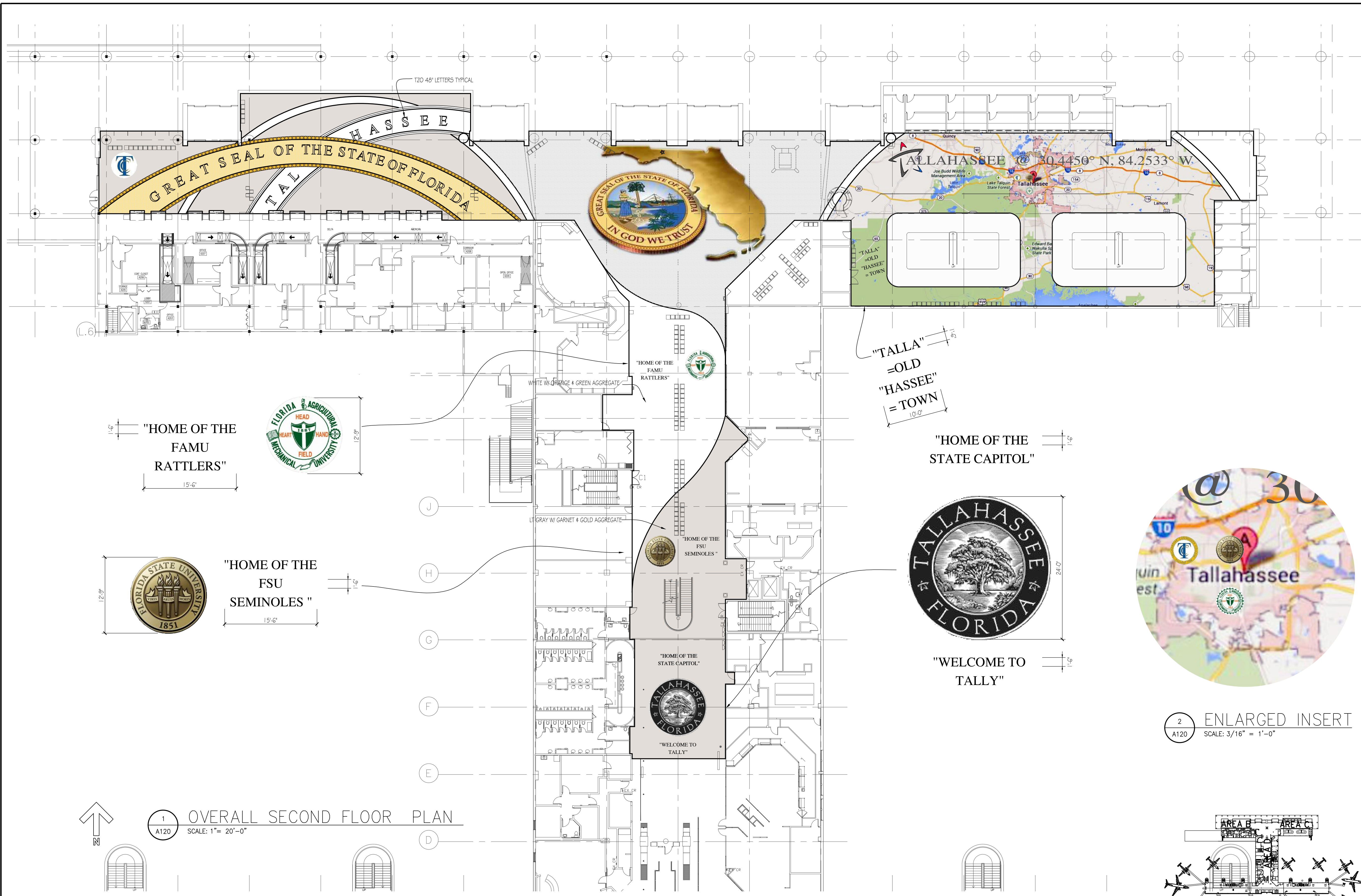
SHEET TITLE

OVERALL  
SECOND FLOOR  
TZO- LAYOUT  
FLOOR FINISHES

SHEET NUMBER

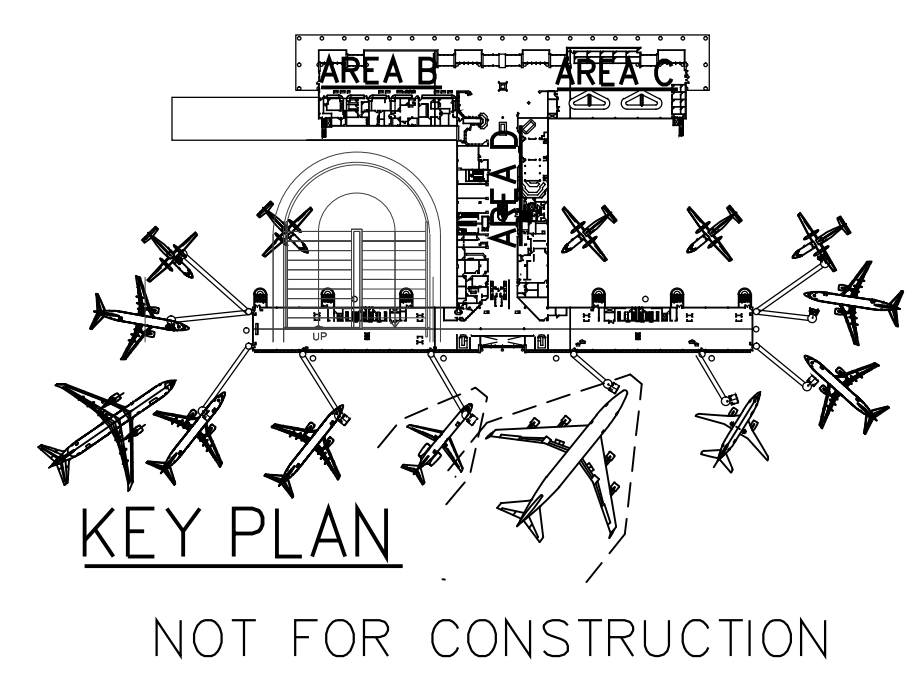
INT-120

CONCEPT 2

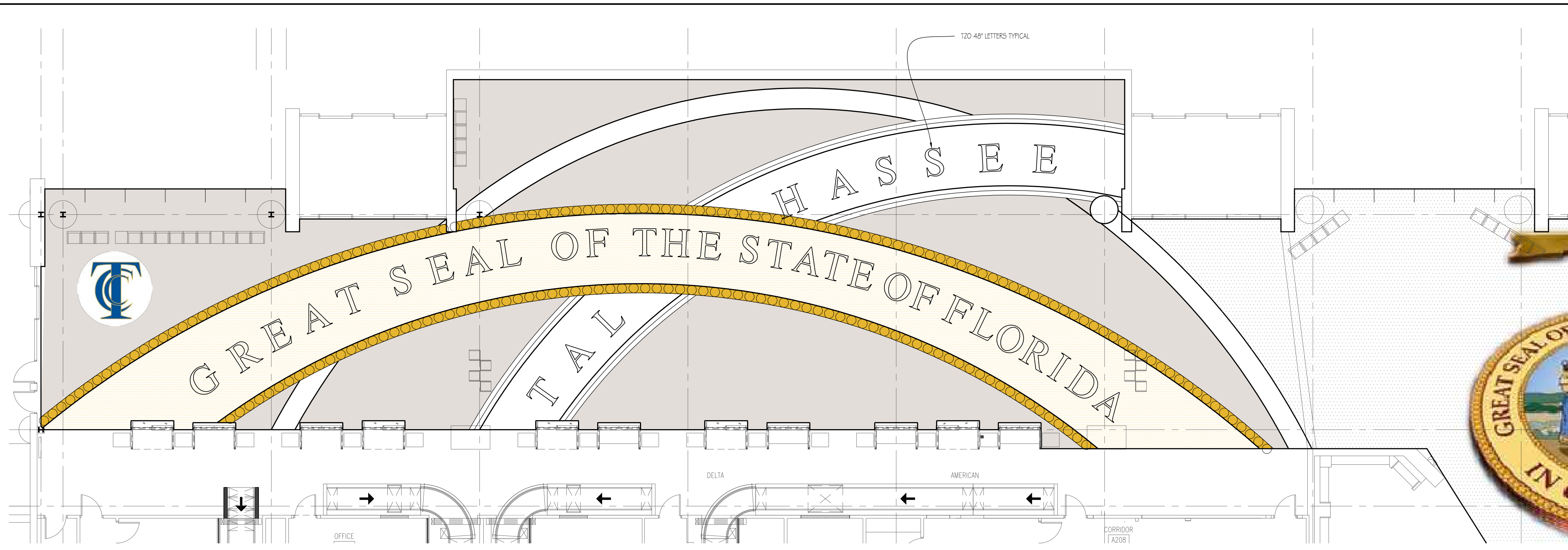


1 OVERALL SECOND FLOOR PLAN  
A120 SCALE: 1" = 20'-0"

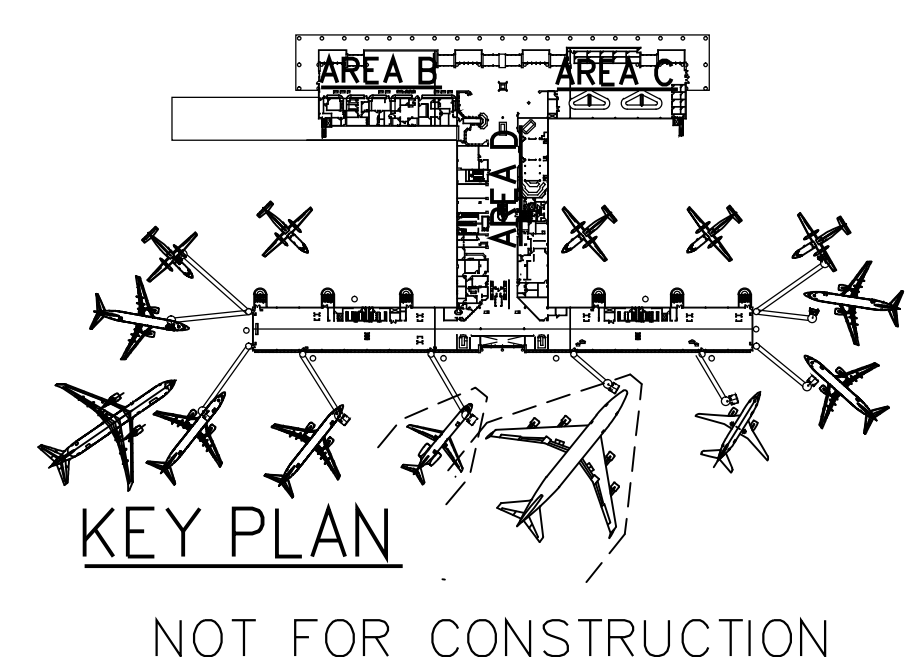
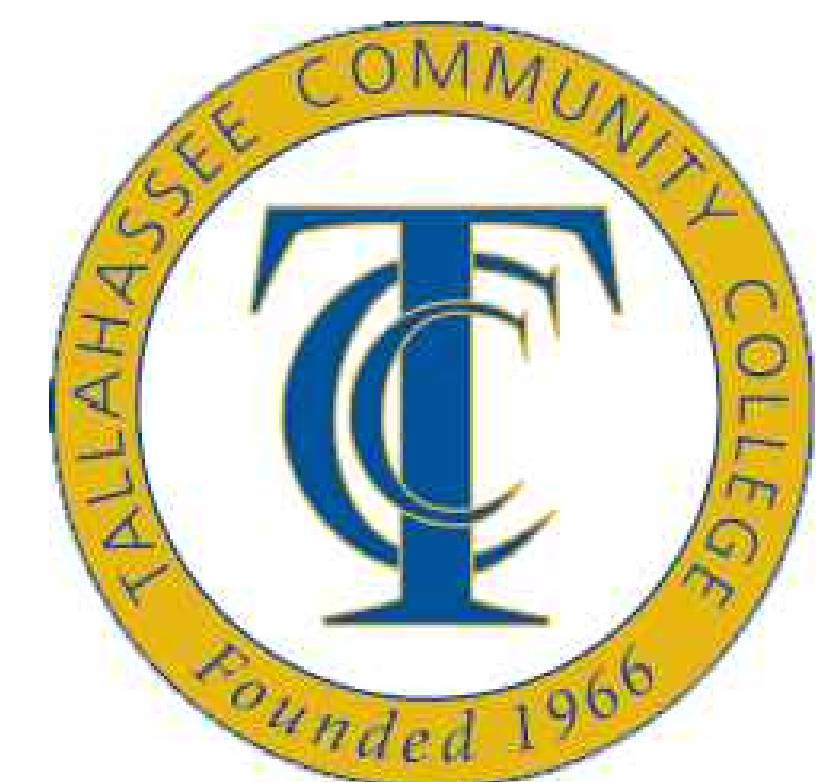
2 ENLARGED INSERT  
A120 SCALE: 3/16" = 1'-0"



# "TALLY" FLORIDA'S CAPITAL CITY



1 SECOND FLOOR PLAN AREA B  
 A120 SCALE: 1/8" = 1'-0"



# "TALLY" FLORIDA'S CAPITAL CITY



10748 Deerwood Park Blvd South  
 Jacksonville, Florida 32256  
 904-256-2500 FAX 904-256-2502  
 www.rsnh.com  
 FL Cert. Nos. AKC001886 + EB0056620 + LC0000210



TALLAHASSEE REGIONAL AIRPORT  
 TALLAHASSEE, FLORIDA



KTD, Inc.  
*Design*  
 KELLY TAAFFE DESIGN

Lic# ID 0002289  
 FL# 13 0001146  
 Kelly@kellytaaffedesign.com  
 Tel.: 813.695.5049  
 Fax: 813.805.2371

IN-LINE BAGGAGE HANDLING SYSTEM

REVISIONS		
NO.	DESCRIPTION	DATE

DATE ISSUED: JULY 23, 2013  
 REVIEWED BY:  
 DRAWN BY:  
 DESIGNED BY:

AEP PROJECT NUMBER  
 201-2494-000  
 © 2012 REYNOLDS, SMITH AND HILLS INC.

SHEET TITLE  
 SECOND FLOOR PLAN AREA B  
 FLOOR FINISHES

SHEET NUMBER  
 INT-121  
 CONCEPT 2