

JACKSONVILLE
AVIATION AUTHORITY

JACKSONVILLE INTERNATIONAL AIRPORT TERMINAL EXPANSION

RS&H
TEAM

Jacksonville, Florida 32256
904-256-2500 FAX 904-256-2501
FL.Cert.Nos. AAC001886 EB0005620 LCC000210

Reynolds, Smith and Hills, Inc.

KBJ Architects, Inc.
RINK DESIGN PARTNERSHIP INC.
RENAISSANCE DESIGN BUILD GROUP

PROJECT

AEP PROJECT NUMBER # 2017262009

TERRAZZO FLOOR FINISHES
100% CD



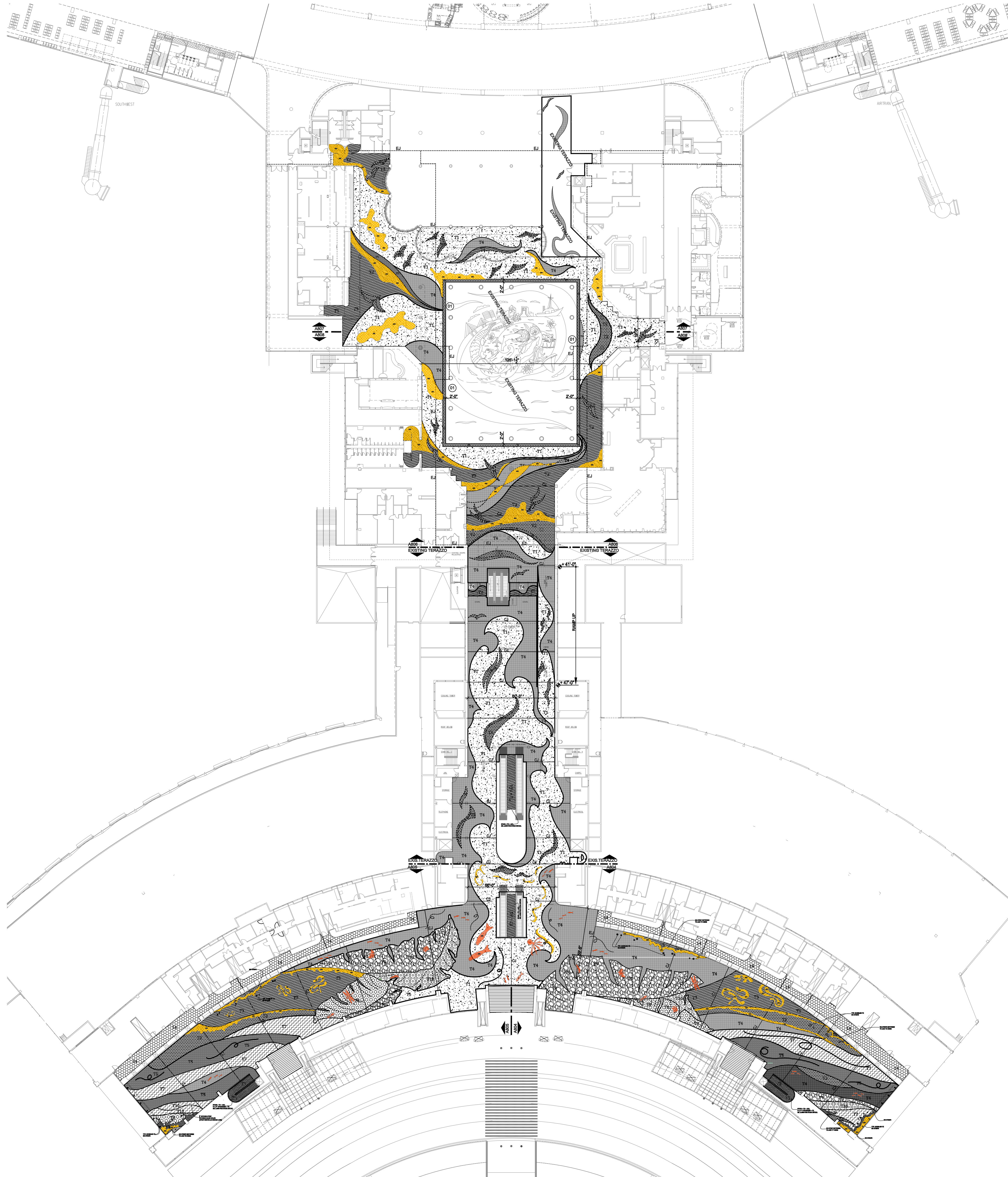
Lic# ID 0002289
FL# 13 0001146
Kelly@kellytaaffedesign.com
Tel.: 813.695.5049
Fax: 813.805.2371

DRAWING INDEX

- | | | | |
|----------|------------|-------------------------------|---------------|
| • A801 | FLOOR PLAN | UPPER LEVEL OVERALL | 1/32" = 1'-0" |
| • A801.1 | FLOORPLAN | UPPER LEVEL SURFACE TREATMENT | 1/32" = 1'-0" |
| • A802 | FLOOR PLAN | UPPER LEVEL WEST | 1/16" = 1'-0" |
| • A803 | FLOOR PLAN | UPPER LEVEL EAST | 1/16" = 1'-0" |
| • A804 | FLOOR PLAN | TICKETING PARTIAL NORTH | 1/8" = 1'-0" |
| • A805 | FLOOR PLAN | TICKETING PARTIAL SOUTH | 1/8" = 1'-0" |
| • A806 | FLOOR PLAN | ATRIUM PARTIAL EAST | 1/8" = 1'-0" |
| • A807 | FLOOR PLAN | ATRIUM PARTIAL WEST | 1/8" = 1'-0" |
| • A808 | DETAILS | STAIRS | VARIES |
| • A809 | DETAILS | TRANSITION DETAILS | VARIES |

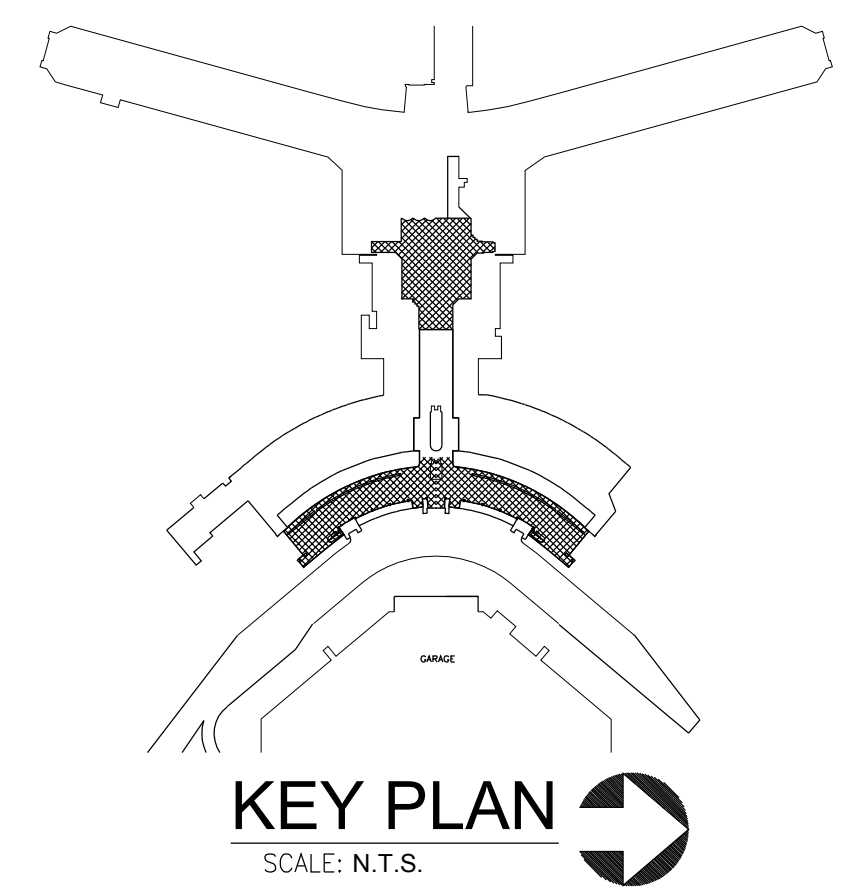
GENERAL NOTE:
 PROPER SCALE OF THIS COPY AND ACCURACY OF NOTED REFERENCE DIMENSIONS ON DRAWING NEED TO BE VERIFIED IN FIELD BY CONTRACTOR. MINOR VARIANCES DUE TO REPRODUCTION AND PRINTING PROCESS MIGHT OCCUR.

NOTE:
 ALL CURVILINEAR DESIGN ELEMENTS TO HAVE SMOOTH TRANSITIONS BETWEEN CURVES TO BE REFLECTED IN 3/4"=1'-0" SHOP DRAWINGS AND ON SITE LAYOUT
 CONTRACTOR REQUIRED TO INTERFACE W/ ALL NEW OR EXISTING WALL BASE MATERIALS (MAJORITY WALL BASE = STAINLESS STEEL), WALL BASE BY OTHERS.
 CONTROL + EXPANSION JOINTS TO ADHERE TO ALL NTMA SPECIFICATIONS FOR EXISTING SLAB. CONTRACTOR TO REFLECT TYPICAL PLACEMENT AND TYPE IN SHOP DRAWINGS SUBMITTAL.
 TZO COLORS #18, #4 MUST MATCH EXISTING. VERIFY THROUGH SUBMITTAL SAMPLING. SAMPLES REQUIRED FOR ALL COLORS.
 WALL BASE BY OTHERS UNLESS OTHERWISE NOTED (EX. STRINGERS AT STAIRS INCLUDED IN SOME CASES, SEE DETAILS)
 AGGREGATE FOR SCATTERING AND FEATURES DOES NOT IN ANYWAY INCREASE THE OVERALL AMOUNT OF AGGREGATE NEEDED FOR THE PROJECT. THE CONTRACTOR SHALL CALCULATE BY SUBSTITUTING AGGREGATES FOR SCATTERING AND FEATURES FOR REGULAR MATRIX AGGREGATES.



PLAN LEGEND - FLOOR FINISHES		
#	PATTERN	SPECIFICATIONS, SEE APPENDIX A
01	T1	TERRAZZO, CONTINENTAL BLUE 67A-1A
02	T2	TERRAZZO, WHITE
03	T3	TERRAZZO, LIGHT COFFEE 38C-2T
04	T4	TERRAZZO, LAKE PLACID 59B-2T
05	T5	TERRAZZO, "COSMIC NAVY" # 76A-1A
06		PEDIGRID (NOT IN CONTRACT)
07	T7	TERRAZZO, BLUE SURF, # 68C-3D
08	T8	TERRAZZO, "NEW HOLLY" # 42C-4D
09	T9	TERRAZZO, "WEEPING WILLOW" # 40-C-4A
10	T10	TERRAZZO, "RIPE AVOCADO" # 51A-1A
11		DIVIDE STRIPS - 3/8" ZINC - @ DESIGNS
12		DIVIDE STRIPS - 3/8" ZINC TO DIVIDE POURS, VEINS OF PALM LEAVES ALL 3/8" STRIPS
13	01	(NOT IN CONTRACT)
14	T4	RUBBER FLOOR MATS (NOT IN CONTRACT)
EJ	EJ	EXPANSION JOINT (SEE DETAIL SHEET)
CJ	CJ	CONSTRUCTION JOINT (SEE DIAGRAM SHEET A802)
SJ	SJ	SOFT JOINTS MAY BE REQ. IF A LARGE PERCENTAGE OF AN AREA REQ. CRACK SURPRESSION MEMBRANE. SEE DTL. FOR SOFT JOINT ASSEMBLY FABRICATION A.806
AG1		DESIGN ACCENTS INDICATED BY "AG1" ARE MADE BY STRATEGICALLY SCATTERED LG. AGGREGATE SIZES #1,2,3. DESIGN PROFESSIONAL TO DIRECT AND PHYSICALLY ASSIST WITH BOTH APPLICATIONS. SEE ALSO PLAN DETAILS
AG2		DESIGN ELEMENTS INDICATED "AG2" REPRESENT FIGURES MADE SIMPLY OF STRATEGICALLY PLACED AGGREGATE. THEY INVOLVE NO DIVIDERSTRIPS+ NO CHANGE IN RESIN COLOR OR T2 FORMULA. THEY ARE DIVIDED SIMPLY BY HANDPLACING LG. AGGREGATE (AT LEAST SIZE #2&3) IN SHAPES INDICATED ON THE PLANS.

1 FLOOR PLAN
OVER ALL, SECOND FLOOR
 A801 SCALE: 1/32" = 1'-0"



RS&H
TEAM
 Jacksonville, Florida 32256
 904-256-2500 FAX 904-256-2501
 FL Cert.No. AAC01886 EB000520 LCC000210
 Reynolds, Smith and Hills, Inc.
 KBJ Architects, Inc.
 RINK DESIGN PARTNERSHIP INC.
 RENAISSANCE DESIGN BUILD GROUP



JACKSONVILLE
 INTERNATIONAL
 AIRPORT
 TERMINAL
 EXPANSION

PROJ#
 2017 262 009
 JIA TERRAZZO FLOORING

RS&H
 Architectural, Engineering, Planning
 and Environmental Services

Reynolds, Smith and Hills, Inc.
 Jacksonville, Florida 32256
 904-256-2500 FAX 904-256-2501
 www.rsandh.com
 FL Cert.No. AAC01886 EB000520 LCC000210

KELLY TAAFFE
 Lich ID 0002289
 FL# 13 0001146
 Kelly@kellytaaffedesign.com
 Tel.: 813.695.5049
 Fax: 813.805.2371

REVISIONS		
NO.	DESCRIPTION	DATE

DATE ISSUED: NOVEMBER 2011
 REVIEWED BY: PHH
 DRAWN BY: DJ
 DESIGNED BY: AC

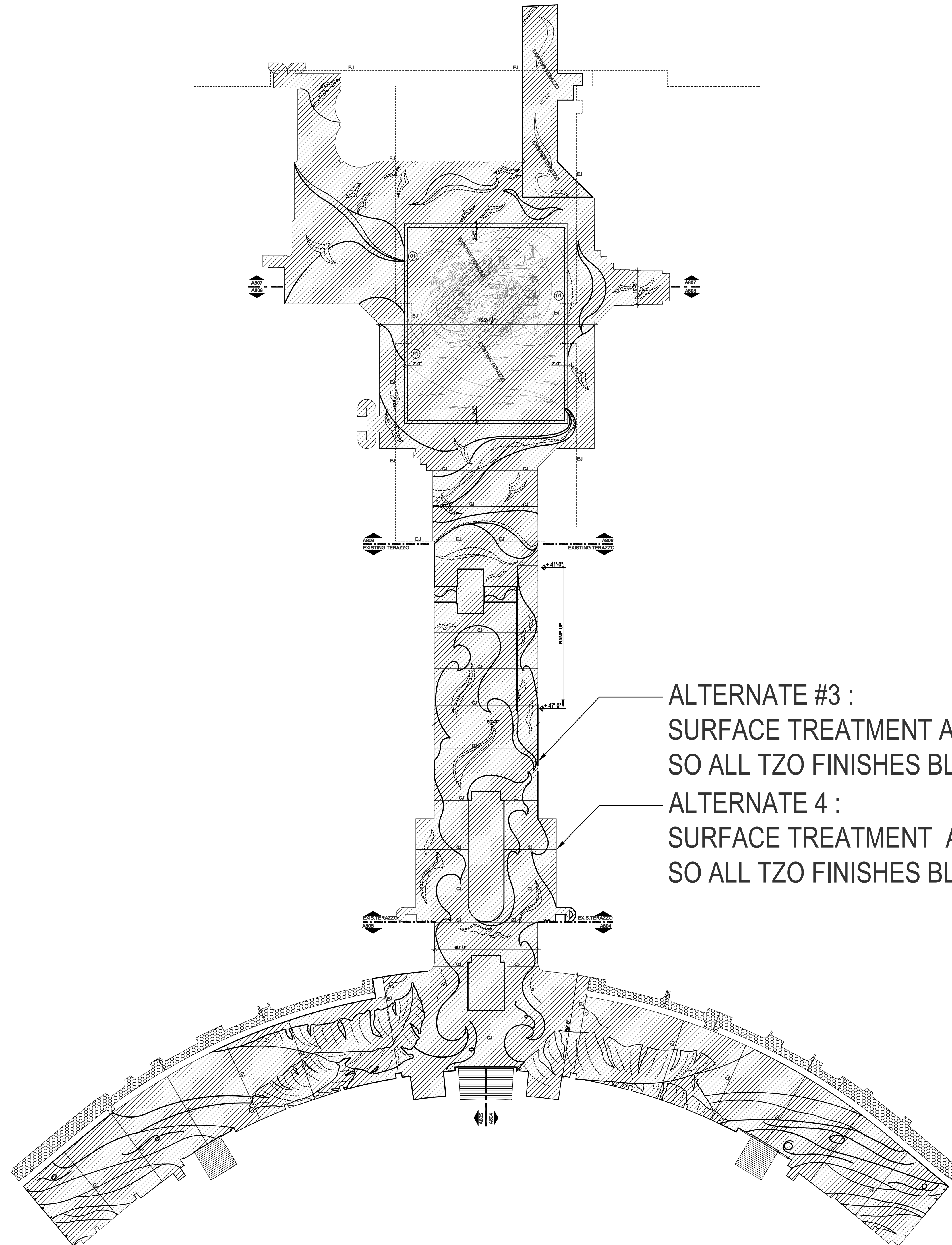
AEP PROJECT NUMBER
 # 2017262009
 © 2009 REYNOLDS, SMITH AND HILLS INC.

SHEET TITLE
**SECOND FLOOR
 PLAN
 OVERALL
 FLOOR
 TREATMENT**

SHEET NUMBER
A801
 L2 TICKETING_CD100-ALTS.DWG
 100% CD

GENERAL NOTE:
 PROPER SCALE OF THIS COPY AND ACCURACY OF NOTED REFERENCE DIMENSIONS ON DRAWING NEED TO BE VERIFIED IN FIELD BY CONTRACTOR. MINOR VARIANCES DUE TO REPRODUCTION AND PRINTING PROCESS MIGHT OCCUR.

NOTE:
 ALL CURVILINEAR DESIGN ELEMENTS TO HAVE SMOOTH TRANSITIONS BETWEEN CURVES TO BE REFLECTED IN 3/4"=1'-0" SHOP DRAWINGS AND ON SITE LAYOUT
 CONTRACTOR REQUIRED TO INTERFACE W/ ALL NEW OR EXISTING WALL BASE MATERIALS (MAJORITY WALL BASE = STAINLESS STEEL). WALL BASE BY OTHERS.
 CONTROL + EXPANSION JOINTS TO ADHERE TO ALL NTMA SPECIFICATIONS FOR EXISTING SLAB. CONTRACTOR TO REFLECT TYPICAL PLACEMENT AND TYPE IN SHOP DRAWINGS SUBMITTAL.
 TZO COLORS #18, #4 MUST MATCH EXISTING. VERIFY THROUGH SUBMITTAL SAMPLING. SAMPLES REQUIRED FOR ALL COLORS.
 WALL BASE BY OTHERS UNLESS OTHERWISE NOTED (EX. STRINGERS AT STAIRS INCLUDED IN SOME CASES. SEE DETAILS)
 AGGREGATE FOR SCATTERING AND FEATURES DOES NOT IN ANYWAY INCREASE THE OVERALL AMOUNT OF AGGREGATE NEEDED FOR THE PROJECT. THE CONTRACTOR SHALL CALCULATE BY SUBSTITUTING AGGREGATES FOR SCATTERING AND FEATURES FOR REGULAR MATRIX AGGREGATES.

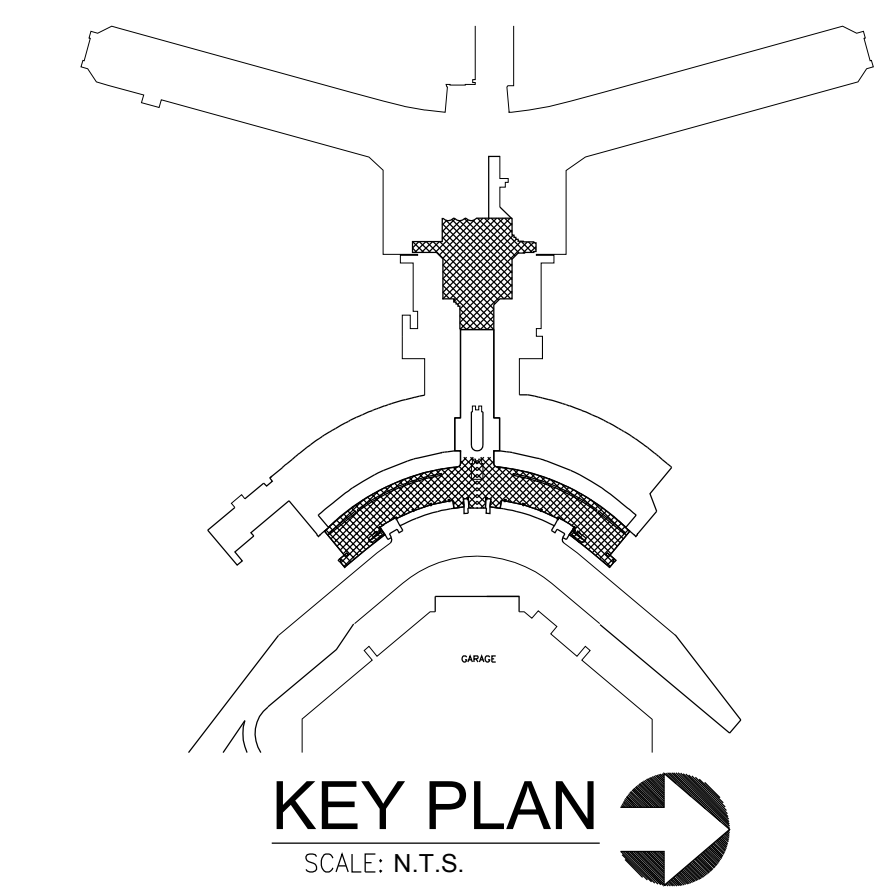


PLAN LEGEND - FLOOR FINISHES		
#	PATTERN	SPECIFICATIONS, SEE APPENDIX A
01	T1	TERROXY, CONTINENTAL BLUE 67A-1A
02	T2	TERROXY, WHITE
03	T3	TERROXY, LIGHT COFFEE 38C-2T
04	T4	TERROXY, LAKE PLACID 59B-2T
05	T5	TERROXY, "COSMIC NAVY" # 76A-1A
06		PEDIGRID (NOT IN CONTRACT)
07	T7	TERROXY, BLUE SURF, # 68C-3D
08	T8	TERROXY, "NEW HOLLY" # 42C-4D
09	T9	TERROXY, "WEEPING WILLOW" # 40-C-4A
10	T10	TERROXY, "RIPE AVOCADO" # 51A-1A
11		DIVIDE STRIPS - 3/8" ZINC - @ DESIGNS
12		DIVIDE STRIPS - 3/8" ZINC TO DIVIDE POURS, VEINS OF PALM LEAVES ALL 3/8" STRIPS
13	01	(NOT IN CONTRACT)
14	T4	RUBBER FLOOR MATS (NOT IN CONTRACT)
EJ	EJ	EXPANSION JOINT (SEE DETAIL SHEET)
CJ	CJ	CONSTRUCTION JOINT (SEE DIAGRAM SHEET A802)
SJ	SJ	SOFT JOINTS MAY BE REQ. IF A LARGE PERCENTAGE OF AN AREA REQ. CRACK SURPRESSION MEMBRANE. SEE DTL. FOR SOFT JOINT ASSEMBLY FABRICATION A.806
AG1		DESIGN ACCENTS INDICATED BY "AG1" ARE MADE BY STRATEGICALLY SCATTERED LG. AGGREGATE SIZES #1,2,3. DESIGN PROFESSIONAL TO DIRECT AND PHYSICALLY ASSIST WITH BOTH APPLICATIONS. SEE ALSO PLAN DETAILS
AG2		DESIGN ELEMENTS INDICATED "AG2" REPRESENT FIGURES MADE SIMPLY OF STRATEGICALLY PLACED AGGREGATE. THEY INVOLVE NO DIVIDERSTRIPS+ NO CHANGE IN RESIN COLOR OR T2 FORMULA. THEY ARE DIVIDED SIMPLY BY HANDPLACING LG. AGGREGATE (AT LEAST SIZE #2&3) IN SHAPES INDICATED ON THE PLANS.

ALTERNATE #3 :
 SURFACE TREATMENT ALL FLOORS "EPIC"
 SO ALL TZO FINISHES BLEND TOGETHER

ALTERNATE 4 :
 SURFACE TREATMENT ALL FLOORS "INSTA-SHIELD"
 SO ALL TZO FINISHES BLEND TOGETHER

1
 A801.1
 FLOOR PLAN
OVER ALL, SECOND FLOOR
 SCALE: 1/32" = 1'-0"



RS&H
TEAM
 Jacksonville, Florida 32256
 904-256-2500 FAX 904-256-2501
 FL Cert.No. AAC01886 EB0005620 LCC000210
 Reynolds, Smith and Hills, Inc.
 KBJ Architects, Inc.
 RINK DESIGN PARTNERSHIP INC.
 RENAISSANCE DESIGN BUILD GROUP



JACKSONVILLE
 INTERNATIONAL
 AIRPORT
 TERMINAL
 EXPANSION

PROJ#
 2017 262 009
 JIA TERRAZZO FLOORING

RS&H
 Architectural, Engineering, Planning
 and Environmental Services

Reynolds, Smith and Hills, Inc.
 Jacksonville, Florida 32256
 904-256-2500 FAX 904-256-2501
 www.rsandh.com
 FL Cert.No. AAC01886 EB0005620 LCC000210

KELLY TAAFFE
 Kelly Taaffe Design
 Lic# ID 0002289
 FL# 13 0001146
 Kelly@kellytaaffedesign.com
 Tel.: 813.695.5049
 Fax: 813.805.2371

REVISIONS		
NO.	DESCRIPTION	DATE

DATE ISSUED: NOVEMBER 2011
 REVIEWED BY: PHH
 DRAWN BY: DJ
 DESIGNED BY: AC

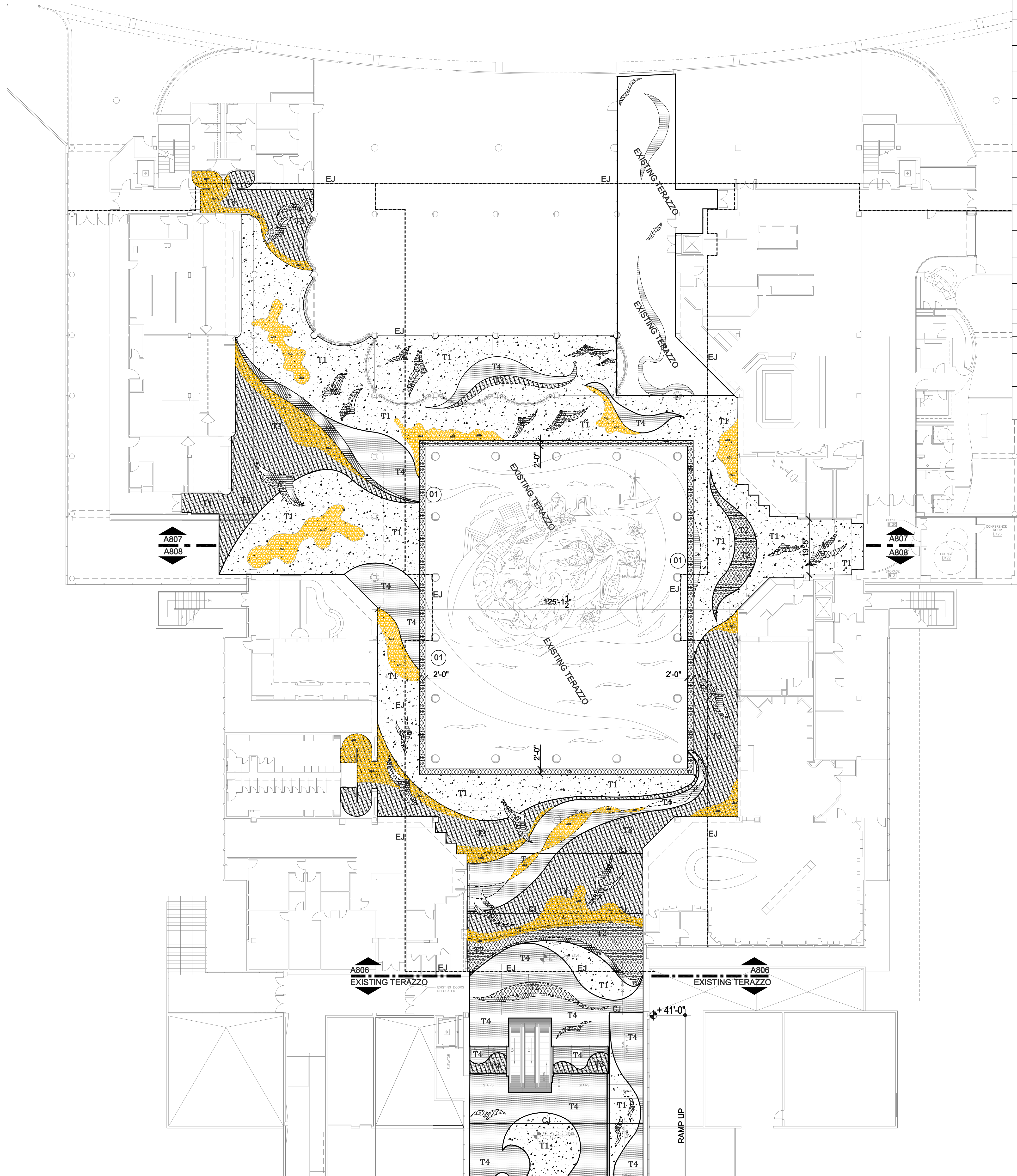
AEP PROJECT NUMBER
 # 2017262009
 © 2009 REYNOLDS, SMITH AND HILLS, INC.

SHEET TITLE
**SECOND FLOOR
 PLAN
 OVERALL
 FLOOR
 TREATMENT**

SHEET NUMBER
A801.1
 L2 TICKETING_CD100-ALTS.DWG
 100% CD

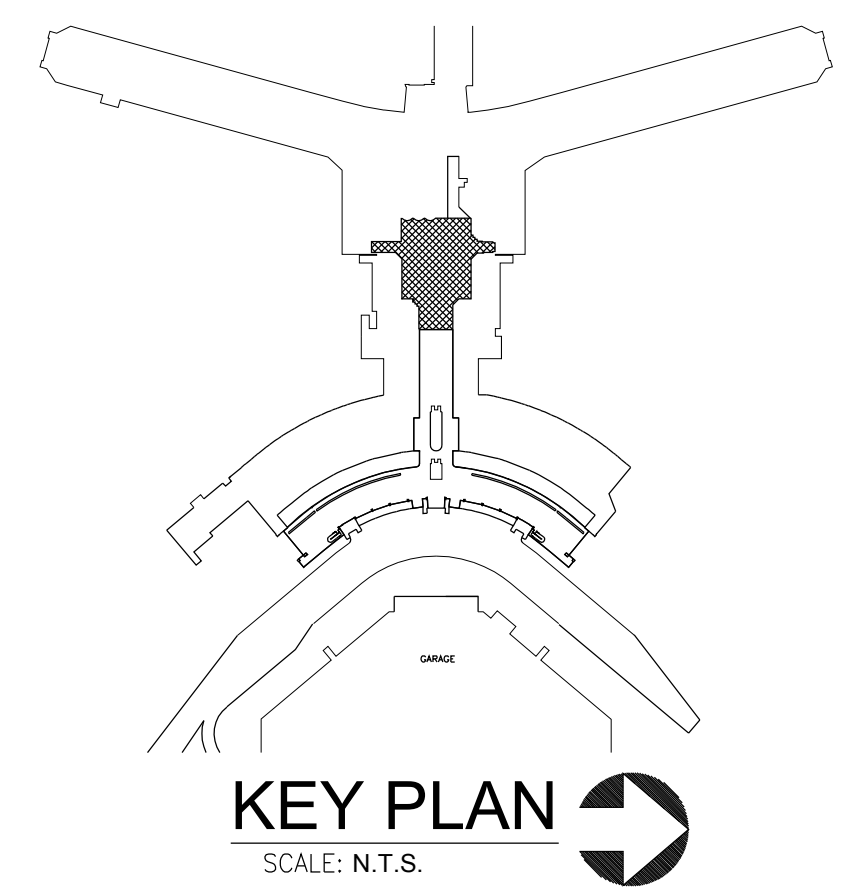
GENERAL NOTE:
 PROPER SCALE OF THIS COPY AND ACCURACY OF NOTED REFERENCE DIMENSIONS ON DRAWING NEED TO BE VERIFIED IN FIELD BY CONTRACTOR. MINOR VARIANCES DUE TO REPRODUCTION AND PRINTING PROCESS MIGHT OCCUR.

NOTE:
 ALL CURVILINEAR DESIGN ELEMENTS TO HAVE SMOOTH TRANSITIONS BETWEEN CURVES TO BE REFLECTED IN 1/4"=1'-0" SHOP DRAWINGS AND ON SITE LAYOUT
 CONTRACTOR REQUIRED TO INTERFACE W/ ALL NEW OR EXISTING WALL BASE MATERIALS (MAJORITY WALL BASE = STAINLESS STEEL). WALL BASE BY OTHERS.
 CONTROL + EXPANSION JOINTS TO ADHERE TO ALL NTMA SPECIFICATIONS FOR EXISTING SLAB. CONTRACTOR TO REFLECT TYPICAL PLACEMENT AND TYPE IN SHOP DRAWINGS SUBMITTAL.
 TZO COLORS #1 & #4 MUST MATCH EXISTING. VERIFY THROUGH SUBMITTAL SAMPLING. SAMPLES REQUIRED FOR ALL COLORS.
 WALL BASE BY OTHERS UNLESS OTHERWISE NOTED (EX. STRINGERS AT STAIRS INCLUDED IN SOME CASES. SEE DETAILS)
 AGGREGATE FOR SCATTERING AND FEATURES DOES NOT IN ANYWAY INCREASE THE OVERALL AMOUNT OF AGGREGATE NEEDED FOR THE PROJECT. THE CONTRACTOR SHALL CALCULATE BY SUBSTITUTING AGGREGATES FOR SCATTERING AND FEATURES FOR REGULAR MATRIX AGGREGATES.



PLAN LEGEND - FLOOR FINISHES		
#	PATTERN	SPECIFICATIONS, SEE APPENDIX A
01	T1	TERRAZZO, CONTINENTAL BLUE 67A-1A
02	T2	TERRAZZO, WHITE
03	T3	TERRAZZO, LIGHT COFFEE 38C-2T
04	T4	TERRAZZO, LAKE PLACID 59B-2T
05	T5	TERRAZZO, "COSMIC NAVY" # 76A-1A
06		PEDIGRID (NOT IN CONTRACT)
07	T7	TERRAZZO, BLUE SURF, # 68C-3D
08	T8	TERRAZZO, "NEW HOLLY" # 42C-4D
09	T9	TERRAZZO, "WEEPING WILLOW" # 40-C-4A
10	T10	TERRAZZO, "RIPE AVOCADO" # 51A-1A
11		DIVIDE STRIPS - 3/8" ZINC - @ DESIGNS
12		DIVIDE STRIPS - 3/8" ZINC TO DIVIDE POURS, VEINS OF PALM LEAVES ALL 3/8" STRIPS
13	01	(NOT IN CONTRACT)
14	T14	RUBBER FLOOR MATS (NOT IN CONTRACT)
EJ	EJ	EXPANSION JOINT (SEE DETAIL SHEET)
CJ	CJ	CONSTRUCTION JOINT (SEE DIAGRAM SHEET A802)
SJ	SJ	SOFT JOINTS MAY BE REQ. IF A LARGE PERCENTAGE OF AN AREA REQ. CRACK SURPRESSION MEMBRANE. SEE DTL. FOR SOFT JOINT ASSEMBLY FABRICATION A.806
AG1		DESIGN ACCENTS INDICATED BY "AG1" ARE MADE BY STRATEGICALLY SCATTERED LG. AGGREGATE SIZES #1, 2, 3. DESIGN PROFESSIONAL TO DIRECT AND PHYSICALLY ASSIST WITH BOTH APPLICATIONS. SEE ALSO PLAN DETAILS
AG2		DESIGN ELEMENTS INDICATED "AG2" REPRESENT FIGURES MADE SIMPLY OF STRATEGICALLY PLACED AGGREGATE. THEY INVOLVE NO DIVIDERSTRIPS+ NO CHANGE IN RESIN COLOR OR T2 FORMULA. THEY ARE DIVIDED SIMPLY BY HANDPLACING LG. AGGREGATE (AT LEAST SIZE #2&3) IN SHAPES INDICATED ON THE PLANS.

1
 A802
 FLOOR PLAN PARTIAL WEST
ATRIUM UPPER LEVEL
 SCALE: 1/16" = 1'-0"



RS&H
TEAM
 Jacksonville, Florida 32256
 904-256-2500 FAX 904-256-2501
 FL Cert. No. AAC01886 EB000562 LCC000210
 Reynolds, Smith and Hills, Inc.
 KBJ Architects, Inc.
 RINK DESIGN PARTNERSHIP INC.
 RENAISSANCE DESIGN BUILD GROUP

JACKSONVILLE
 AVIATION AUTHORITY

JACKSONVILLE
 INTERNATIONAL
 AIRPORT
 TERMINAL
 EXPANSION

PROJ#
 2017 262 009
 JIA TERRAZZO FLOORING

RS&H
 Architectural, Engineering, Planning
 and Environmental Services

Reynolds, Smith and Hills, Inc.
 Jacksonville, Florida 32256
 904-256-2500 FAX 904-256-2501
 www.rsandh.com
 FL Cert. No. AAC01886 EB000562 LCC000210

KELLY TAAFFE
 Lic# ID 0002289
 FL# 13 0001146
 Kelly@kellytaaffedesign.com
 Tel.: 813.695.5049
 Fax: 813.805.2371

REVISIONS		
NO.	DESCRIPTION	DATE

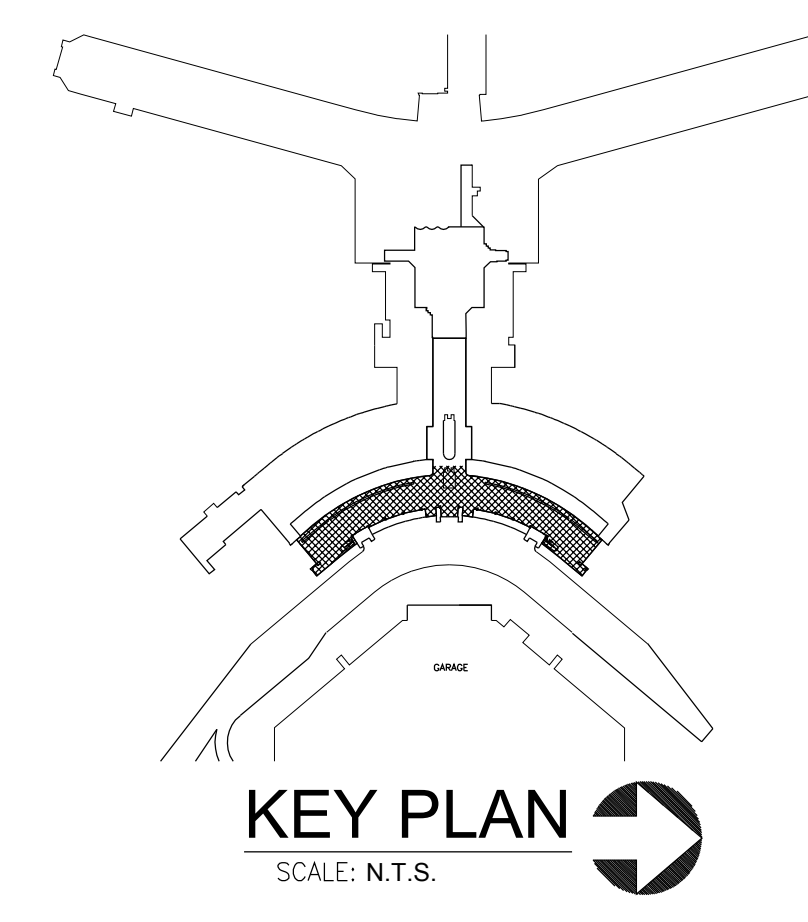
DATE ISSUED: NOVEMBER 2011
 REVIEWED BY: PHH
 DRAWN BY: DJ
 DESIGNED BY: AC
 AEP PROJECT NUMBER
 # 2017262009
 © 2009 REYNOLDS, SMITH AND HILLS, INC.

SHEET TITLE
SECOND FLOOR
PLAN
CONCOURSE
FLOOR FINISHES

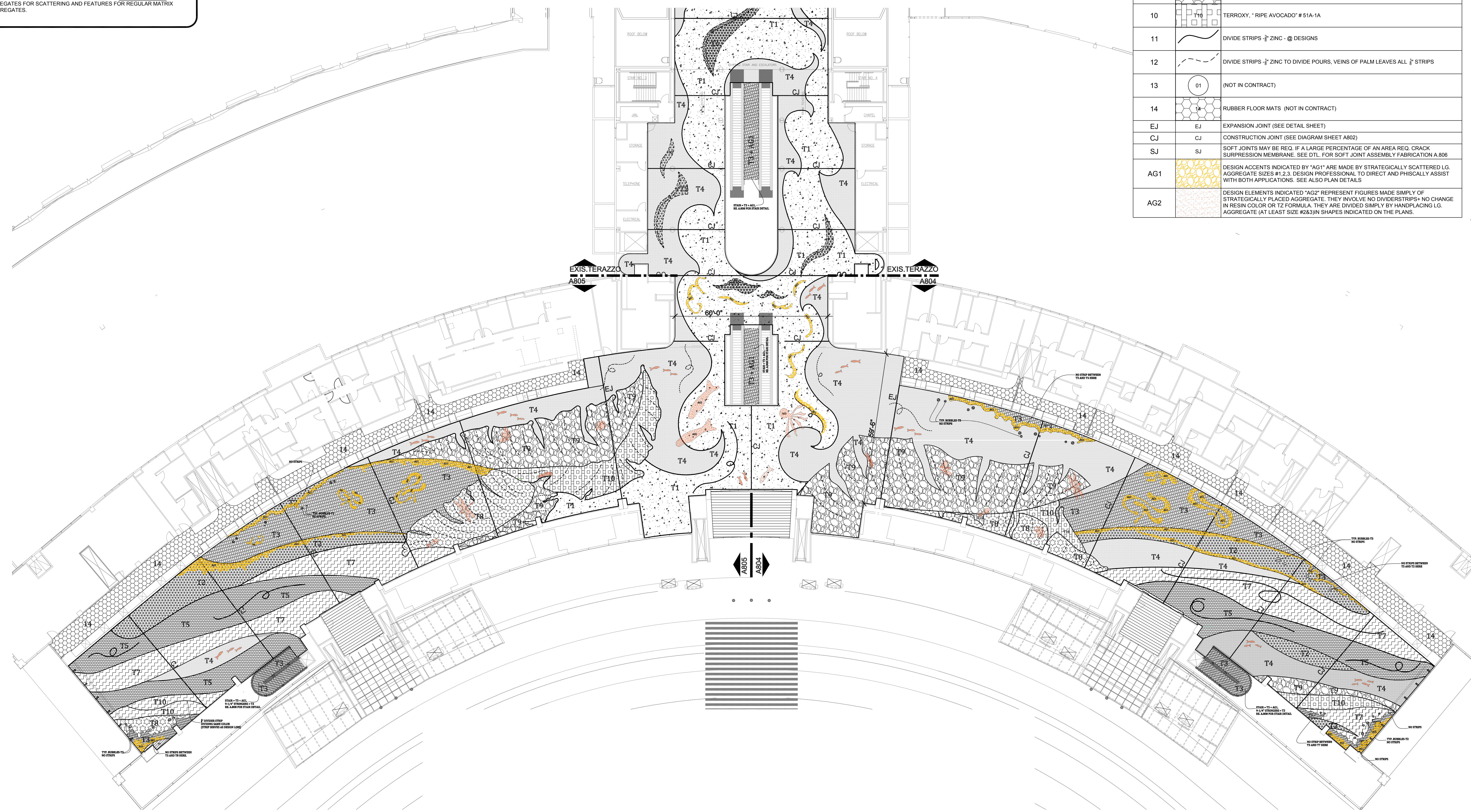
SHEET NUMBER
A802
 L2 TICKETING_CD100-ALTS.DWG
 100% CD

GENERAL NOTE:
 PROPER SCALE OF THIS COPY AND ACCURACY OF NOTED REFERENCE DIMENSIONS ON DRAWING NEED TO BE VERIFIED IN FIELD BY CONTRACTOR. MINOR VARIANCES DUE TO REPRODUCTION AND PRINTING PROCESS MIGHT OCCUR.

NOTE:
 ALL CURVILINEAR DESIGN ELEMENTS TO HAVE SMOOTH TRANSITIONS BETWEEN CURVES TO BE REFLECTED IN 3/4"=1'-0" SHOP DRAWINGS AND ON SITE LAYOUT
 CONTRACTOR REQUIRED TO INTERFACE W/ ALL NEW OR EXISTING WALL BASE MATERIALS (MAJORITY WALL BASE = STAINLESS STEEL), WALL BASE BY OTHERS.
 CONTROL + EXPANSION JOINTS TO ADHERE TO ALL NTMA SPECIFICATIONS FOR EXISTING SLAB. CONTRACTOR TO REFLECT TYPICAL PLACEMENT AND TYPE IN SHOP DRAWINGS SUBMITTAL.
 TZO COLORS #18, #4 MUST MATCH EXISTING. VERIFY THROUGH SUBMITTAL SAMPLING. SAMPLES REQUIRED FOR ALL COLORS.
 WALL BASE BY OTHERS UNLESS OTHERWISE NOTED (EX. STRINGERS AT STAIRS INCLUDED IN SOME CASES, SEE DETAILS)
 AGGREGATE FOR SCATTERING AND FEATURES DOES NOT IN ANYWAY INCREASE THE OVERALL AMOUNT OF AGGREGATE NEEDED FOR THE PROJECT. THE CONTRACTOR SHALL CALCULATE BY SUBSTITUTING AGGREGATES FOR SCATTERING AND FEATURES FOR REGULAR MATRIX AGGREGATES.



PLAN LEGEND - FLOOR FINISHES		
#	PATTERN	SPECIFICATIONS, SEE APPENDIX A
01	T1	TERRROY, CONTINENTAL BLUE 67A-1A
02	T2	TERRROY, WHITE
03	T3	TERRROY, LIGHT COFFEE 38C-2T
04	T4	TERRROY, LAKE PLACID 59B-2T
05	T5	TERRROY, "COSMIC NAVY" # 76A-1A
06		PEDIGRID (NOT IN CONTRACT)
07	T7	TERRROY, BLUE SURF, # 68C-3D
08	T8	TERRROY, "NEW HOLLY" # 42C-4D
09	T9	TERRROY, "WEEPING WILLOW" # 40-C-4A
10	T10	TERRROY, "RIPE AVOCADO" # 51A-1A
11		DIVIDE STRIPS - 3/8" ZINC - @ DESIGNS
12		DIVIDE STRIPS - 3/8" ZINC TO DIVIDE POURS, VEINS OF PALM LEAVES ALL 3/8" STRIPS
13	01	(NOT IN CONTRACT)
14	T4	RUBBER FLOOR MATS (NOT IN CONTRACT)
EJ	EJ	EXPANSION JOINT (SEE DETAIL SHEET)
CJ	CJ	CONSTRUCTION JOINT (SEE DIAGRAM SHEET A802)
SJ	SJ	SOFT JOINTS MAY BE REQ. IF A LARGE PERCENTAGE OF AN AREA REQ. CRACK SURPRESSION MEMBRANE. SEE DTL. FOR SOFT JOINT ASSEMBLY FABRICATION A.806
AG1		DESIGN ACCENTS INDICATED BY "AG1" ARE MADE BY STRATEGICALLY SCATTERED LG. AGGREGATE SIZES #1,2,3. DESIGN PROFESSIONAL TO DIRECT AND PHYSICALLY ASSIST WITH BOTH APPLICATIONS. SEE ALSO PLAN DETAILS
AG2		DESIGN ELEMENTS INDICATED "AG2" REPRESENT FIGURES MADE SIMPLY OF STRATEGICALLY PLACED AGGREGATE. THEY INVOLVE NO DIVIDERSTRIPS+ NO CHANGE IN RESIN COLOR OR T2 FORMULA. THEY ARE DIVIDED SIMPLY BY HANDPLACING LG. AGGREGATE (AT LEAST SIZE #2&3) IN SHAPES INDICATED ON THE PLANS.



1
 A803
 FLOOR PLAN - PARTIAL EAST
TICKETING UPPER LEVEL
 SCALE: 1/16" = 1'-0"

RS&H
TEAM
 Jacksonville, Florida 32256
 904-256-2500 FAX 904-256-2501
 FL Cert.No. AAC01886 EB0005620 LCC000210
 Reynolds, Smith and Hills, Inc.
 KBJ Architects, Inc.
 RINK DESIGN PARTNERSHIP INC.
 RENAISSANCE DESIGN BUILD GROUP

JACKSONVILLE
 AVIATION AUTHORITY

JACKSONVILLE
 INTERNATIONAL
 AIRPORT
 TERMINAL
 EXPANSION

PROJ#
 2017 262 009
JIA TERRAZZO FLOORING

RS&H
 Architectural, Engineering, Planning
 and Environmental Services

Reynolds, Smith and Hills, Inc.
 Jacksonville, Florida 32256
 904-256-2500 FAX 904-256-2501
 www.rsandh.com
 FL Cert.No. AAC01886 EB0005620 LCC000210

KELLY TAAFFE
 Kelly Taffa
 Lic# ID 0002289
 FL# 13 0001146
 Kelly@kellytaffadesign.com
 Tel.: 813.695.5049
 Fax: 813.805.2371

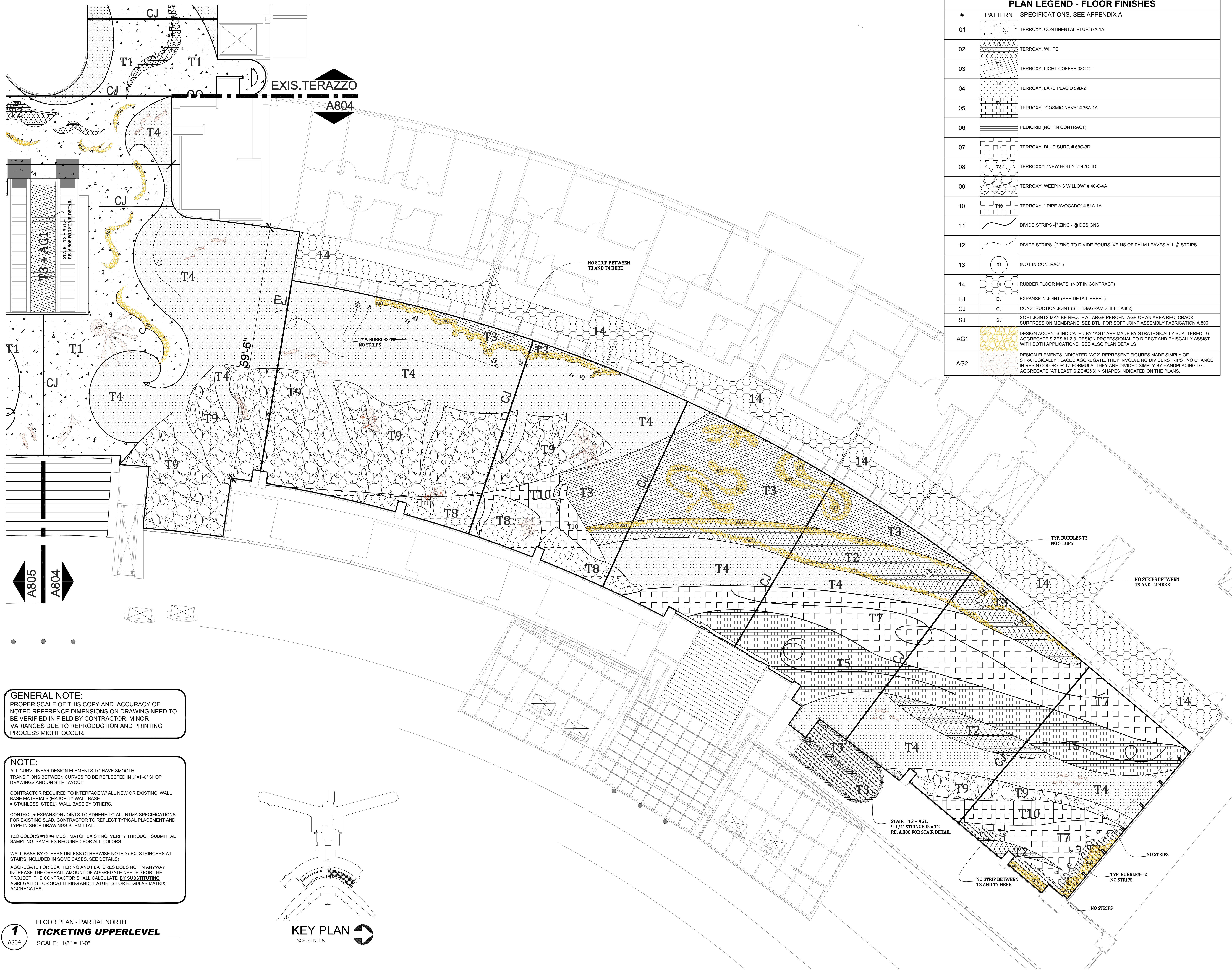
REVISIONS		
NO.	DESCRIPTION	DATE

DATE ISSUED: NOVEMBER 2011
 REVIEWED BY: PHH
 DRAWN BY: DJ
 DESIGNED BY: AC

AEP PROJECT NUMBER
 # 2017262009
 © 2009 REYNOLDS, SMITH AND HILLS, INC.

SHEET TITLE
SECOND FLOOR
PLAN
TICKETING
FLOOR FINISHES

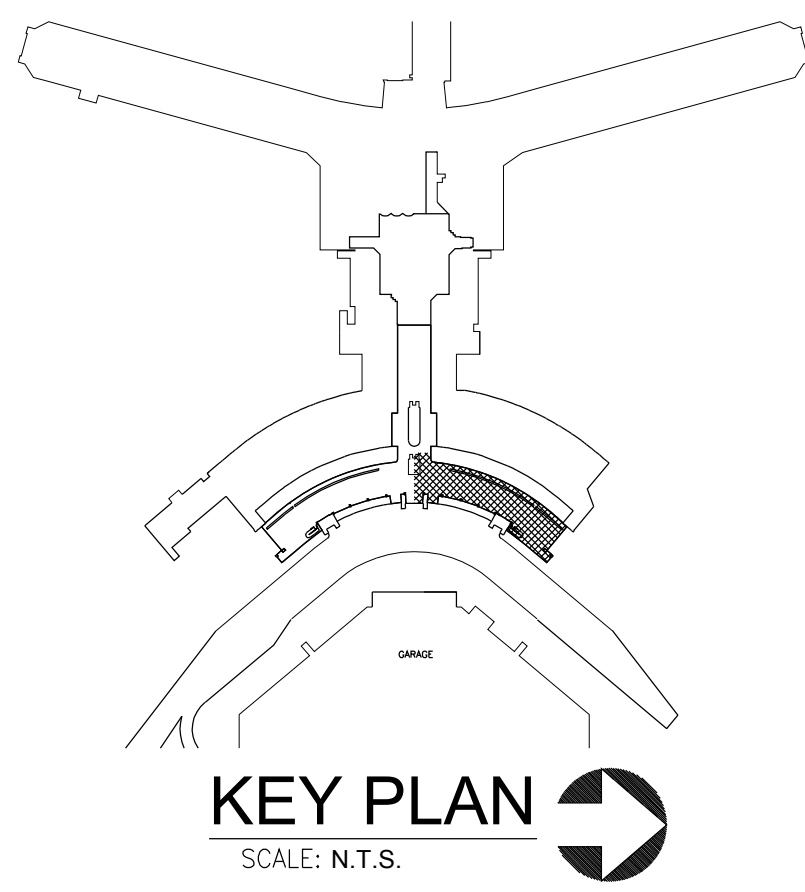
SHEET NUMBER
A803
 L2 TICKETING_CD100-ALTS.DWG
 100% CD



PLAN LEGEND - FLOOR FINISHES		
#	PATTERN	SPECIFICATIONS, SEE APPENDIX A
01	T1	TERROXY, CONTINENTAL BLUE 67A-1A
02	T2	TERROXY, WHITE
03	T3	TERROXY, LIGHT COFFEE 38C-2T
04	T4	TERROXY, LAKE PLACID 59B-2T
05	T5	TERROXY, "COSMIC NAVY" # 76A-1A
06		PEDIGRID (NOT IN CONTRACT)
07	T7	TERROXY, BLUE SURF, # 68C-3D
08	T8	TERROXY, "NEW HOLLY" # 42C-4D
09	T9	TERROXY, "WEEPING WILLOW" # 40-C-4A
10	T10	TERROXY, "RIPE AVOCADO" # 51A-1A
11		DIVIDE STRIPS - 3/4" ZINC - @ DESIGNS
12		DIVIDE STRIPS - 3/4" ZINC TO DIVIDE POURS, VEINS OF PALM LEAVES ALL 1/2" STRIPS
13		(NOT IN CONTRACT)
14		RUBBER FLOOR MATS (NOT IN CONTRACT)
EJ	EJ	EXPANSION JOINT (SEE DETAIL SHEET)
CJ	CJ	CONSTRUCTION JOINT (SEE DIAGRAM SHEET A802)
SJ	SJ	SOFT JOINTS MAY BE REQ. IF A LARGE PERCENTAGE OF AN AREA REQ. CRACK SUPPRESSION MEMBRANE. SEE DTL. FOR SOFT JOINT ASSEMBLY FABRICATION A.806
AG1		DESIGN ACCENTS INDICATED BY "AG1" ARE MADE BY STRATEGICALLY SCATTERED LG. AGGREGATE SIZES #1,2,3. DESIGN PROFESSIONAL TO DIRECT AND PHYSICALLY ASSIST WITH BOTH APPLICATIONS. SEE ALSO PLAN DETAILS
AG2		DESIGN ELEMENTS INDICATED "AG2" REPRESENT FIGURES MADE SIMPLY OF STRATEGICALLY PLACED AGGREGATE. THEY INVOLVE NO DIVIDERSTRIPS+ NO CHANGE IN RESIN COLOR OR T2 FORMULA. THEY ARE DIVIDED SIMPLY BY HANDPLACING LG. AGGREGATE (AT LEAST SIZE #28.3) IN SHAPES INDICATED ON THE PLANS.

GENERAL NOTE:
 PROPER SCALE OF THIS COPY AND ACCURACY OF NOTED REFERENCE DIMENSIONS ON DRAWING NEED TO BE VERIFIED IN FIELD BY CONTRACTOR. MINOR VARIANCES DUE TO REPRODUCTION AND PRINTING PROCESS MIGHT OCCUR.

NOTE:
 ALL CURVILINEAR DESIGN ELEMENTS TO HAVE SMOOTH TRANSITIONS BETWEEN CURVES TO BE REFLECTED IN 1/4" SHOP DRAWINGS AND ON SITE LAYOUT
 CONTRACTOR REQUIRED TO INTERFACE W/ ALL NEW OR EXISTING WALL BASE MATERIALS (MAJORITY WALL BASE = STAINLESS STEEL) WALL BASE BY OTHERS.
 CONTROL - EXPANSION JOINTS TO ADHERE TO ALL NTMA SPECIFICATIONS FOR EXISTING SLAB. CONTRACTOR TO REFLECT TYPICAL PLACEMENT AND TYPE IN SHOP DRAWINGS SUBMITTAL.
 T20 COLORS #18 #4 MUST MATCH EXISTING. VERIFY THROUGH SUBMITTAL SAMPLING. SAMPLES REQUIRED FOR ALL COLORS.
 WALL BASE BY OTHERS UNLESS OTHERWISE NOTED (EX. STRINGERS AT STAIRS INCLUDED IN SOME CASES, SEE DETAILS)
 AGGREGATE FOR SCATTERING AND FEATURES DOES NOT IN ANYWAY INCREASE THE OVERALL AMOUNT OF AGGREGATE NEEDED FOR THE PROJECT. THE CONTRACTOR SHALL CALCULATE BY SUBSTITUTING AGGREGATES FOR SCATTERING AND FEATURES FOR REGULAR MATRIX AGGREGATES.



1 FLOOR PLAN - PARTIAL NORTH
A804 TICKETING UPPERLEVEL
 SCALE: 1/8" = 1'-0"

RS&H
TEAM
 Jacksonville, Florida 32256
 904-256-2500 FAX 904-256-2501
 FL Cert.No. AAC01886 EB000562 LCC000210
 Reynolds, Smith and Hills, Inc.
 KBJ Architects, Inc.
 RINK DESIGN PARTNERSHIP INC.
 RENAISSANCE DESIGN BUILD GROUP



JACKSONVILLE
 INTERNATIONAL
 AIRPORT
 TERMINAL
 EXPANSION

PROJ#
 2017 262 009
 JIA TERRAZZO FLOORING



Reynolds, Smith and Hills, Inc.
 1748 Deerwood Park Boulevard South
 Jacksonville, Florida 32256
 904-256-2500 FAX 904-256-2501
 www.rsandh.com
 FL Cert.No. AAC01886 EB000562 LCC000210



Lic# ID 0002289
 FL# 13 0001146
 Kelly@kellytaaffedesign.com
 Tel.: 813.695.5049
 Fax: 813.805.2371

REVISIONS		
NO.	DESCRIPTION	DATE

DATE ISSUED: NOVEMBER 2011
 REVIEWED BY: PHH
 DRAWN BY: DJ
 DESIGNED BY: AC

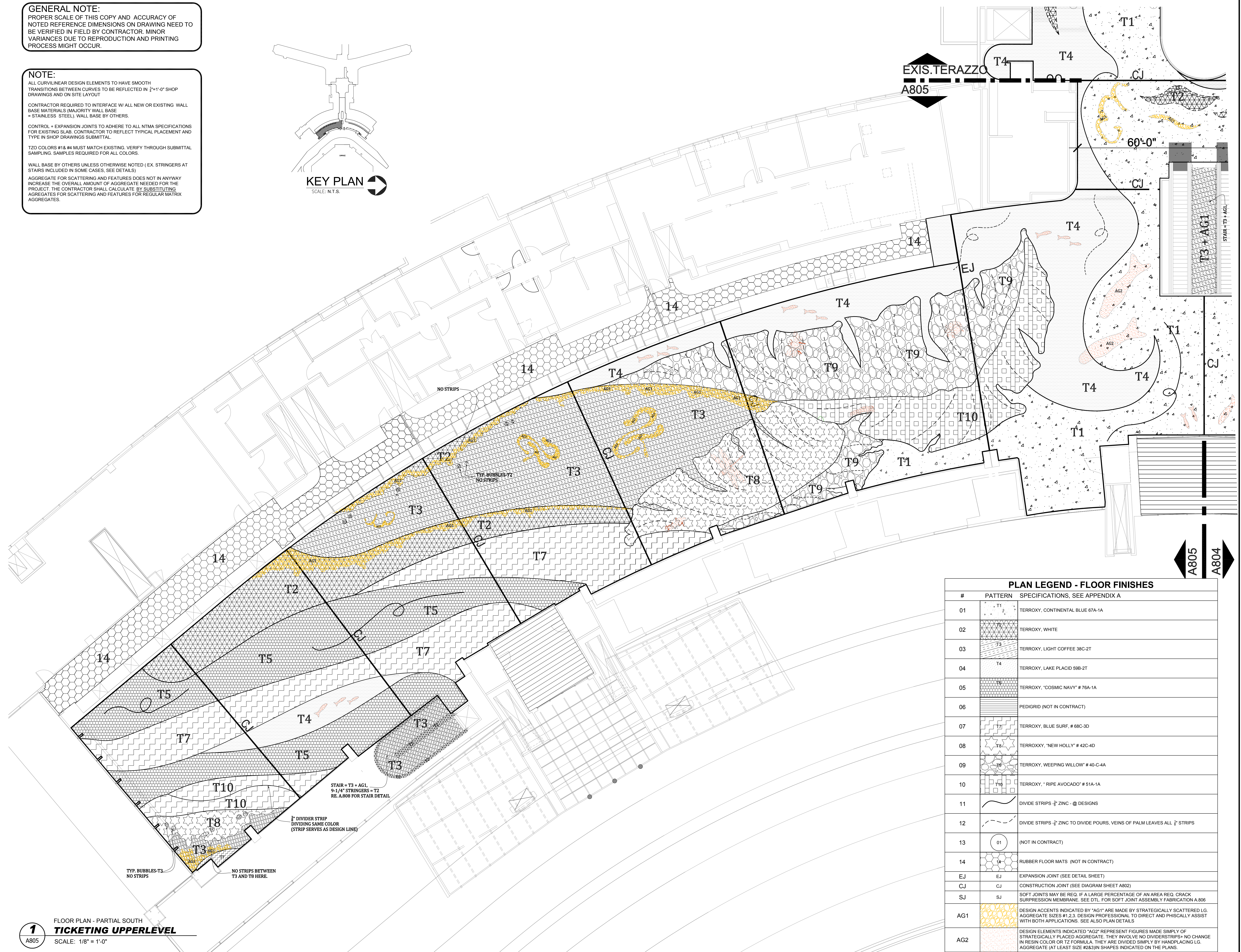
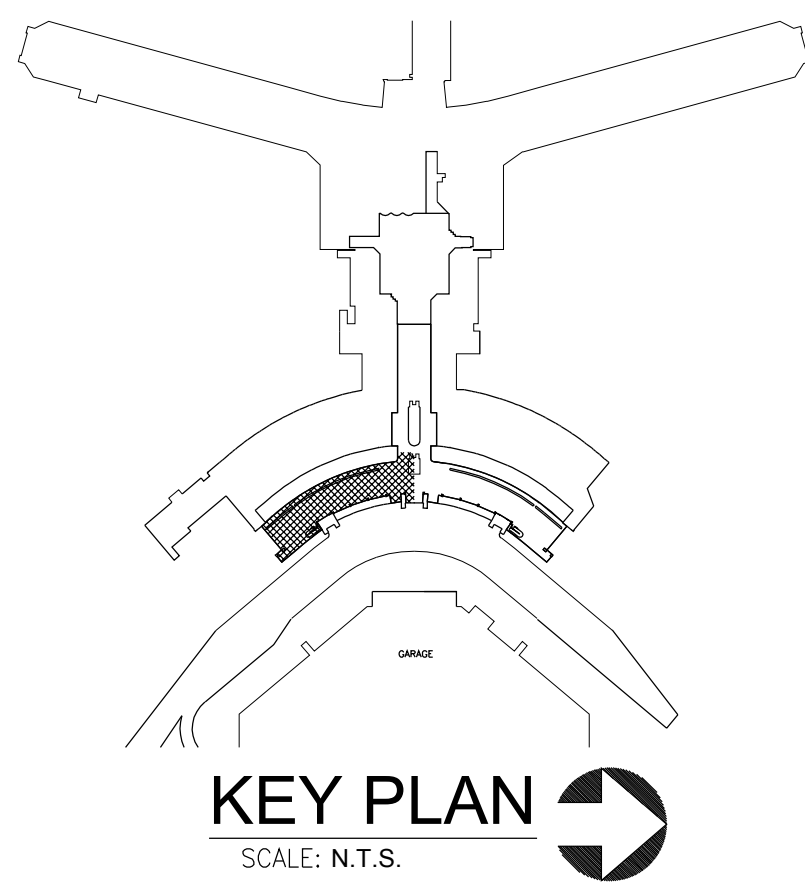
AEP PROJECT NUMBER
 # 2017262009
 © 2009 REYNOLDS, SMITH AND HILLS INC.

SHEET TITLE
**SECOND FLOOR
 PLAN
 TICKETING
 FLOOR FINISHES**

SHEET NUMBER
A804
 L2 TICKETING_CD100-ALTS.DWG
 100% CD

GENERAL NOTE:
 PROPER SCALE OF THIS COPY AND ACCURACY OF NOTED REFERENCE DIMENSIONS ON DRAWING NEED TO BE VERIFIED IN FIELD BY CONTRACTOR. MINOR VARIANCES DUE TO REPRODUCTION AND PRINTING PROCESS MIGHT OCCUR.

NOTE:
 ALL CURVILINEAR DESIGN ELEMENTS TO HAVE SMOOTH TRANSITIONS BETWEEN CURVES TO BE REFLECTED IN 1/4"=1'-0" SHOP DRAWINGS AND ON SITE LAYOUT
 CONTRACTOR REQUIRED TO INTERFACE W/ ALL NEW OR EXISTING WALL BASE MATERIALS (MAJORITY WALL BASE = STAINLESS STEEL) WALL BASE BY OTHERS.
 CONTROL + EXPANSION JOINTS TO ADHERE TO ALL NTMA SPECIFICATIONS FOR EXISTING SLAB. CONTRACTOR TO REFLECT TYPICAL PLACEMENT AND TYPE IN SHOP DRAWINGS SUBMITTAL.
 T20 COLORS #18 & #4 MUST MATCH EXISTING. VERIFY THROUGH SUBMITTAL SAMPLING. SAMPLES REQUIRED FOR ALL COLORS.
 WALL BASE BY OTHERS UNLESS OTHERWISE NOTED (EX. STRINGERS AT STAIRS INCLUDED IN SOME CASES, SEE DETAILS)
 AGGREGATE FOR SCATTERING AND FEATURES DOES NOT IN ANYWAY INCREASE THE OVERALL AMOUNT OF AGGREGATE NEEDED FOR THE PROJECT. THE CONTRACTOR SHALL CALCULATE BY SUBSTITUTING AGGREGATES FOR SCATTERING AND FEATURES FOR REGULAR MATRIX AGGREGATES.



PLAN LEGEND - FLOOR FINISHES		
#	PATTERN	SPECIFICATIONS. SEE APPENDIX A
01	T1	TERROXY, CONTINENTAL BLUE 67A-1A
02	T2	TERROXY, WHITE
03	T3	TERROXY, LIGHT COFFEE 38C-2T
04	T4	TERROXY, LAKE PLACID 59B-2T
05	T5	TERROXY, "COSMIC NAVY" # 76A-1A
06		PEDIGRID (NOT IN CONTRACT)
07	T7	TERROXY, BLUE SURF, # 68C-3D
08	T8	TERROXY, "NEW HOLLY" # 42C-4D
09	T9	TERROXY, "WEeping WILLOW" # 40-C-4A
10	T10	TERROXY, "RIPE AVOCADO" # 51A-1A
11		DIVIDE STRIPS - 1/2" ZINC @ DESIGNS
12		DIVIDE STRIPS - 1/2" ZINC TO DIVIDE POURS, VEINS OF PALM LEAVES ALL 1/2" STRIPS
13	01	(NOT IN CONTRACT)
14	14	RUBBER FLOOR MATS (NOT IN CONTRACT)
EJ	EJ	EXPANSION JOINT (SEE DETAIL SHEET)
CJ	CJ	CONSTRUCTION JOINT (SEE DIAGRAM SHEET A802)
SJ	SJ	SOFT JOINTS MAY BE REQ. IF A LARGE PERCENTAGE OF AN AREA REQ. CRACK SURPRESSION MEMBRANE. SEE DTL. FOR SOFT JOINT ASSEMBLY FABRICATION A 806
AG1		DESIGN ACCENTS INDICATED BY "AG1" ARE MADE BY STRATEGICALLY SCATTERED LG. AGGREGATE SIZES #1,2,3. DESIGN PROFESSIONAL TO DIRECT AND PHISCALLY ASSIST WITH BOTH APPLICATIONS. SEE ALSO PLAN DETAILS
AG2		DESIGN ELEMENTS INDICATED "AG2" REPRESENT FIGURES MADE SIMPLY OF STRATEGICALLY PLACED AGGREGATE. THEY INVOLVE NO DIVIDERSTRIPS+ NO CHANGE IN RESIN COLOR OR T2 FORMULA. THEY ARE DIVIDED SIMPLY BY HANDPLACING LG. AGGREGATE (AT LEAST SIZE #2&3) IN SHAPES INDICATED ON THE PLANS.

FLOOR PLAN - PARTIAL SOUTH
TICKETING UPPERLEVEL
 SCALE: 1/8" = 1'-0"

RS&H
TEAM
 Jacksonville, Florida 32256
 904-256-2500 FAX 904-256-2501
 FL Cert No. AAC01886 EB000620 LCC000210
 Reynolds, Smith and Hills, Inc.
 KBJ Architects, Inc.
 RINK DESIGN PARTNERSHIP INC.
 RENAISSANCE DESIGN BUILD GROUP

JACKSONVILLE
 AVIATION AUTHORITY

JACKSONVILLE
 INTERNATIONAL
 AIRPORT
 TERMINAL
 EXPANSION

PROJ#
 2017 262 009
 JIA TERRAZZO FLOORING

RS&H
 Architectural, Engineering, Planning
 and Environmental Services
 Reynolds, Smith and Hills, Inc.
 1748 Deerwood Park Boulevard South
 Jacksonville, Florida 32256
 904-256-2500 FAX 904-256-2501
 www.rsandh.com
 FL Cert No. AAC01886 EB000620 LCC000210

KELLY TAAFFE
 Lic# ID 0002289
 FL# 13 0001146
 Kelly@kellytaaffedesign.com
 Tel.: 813.695.5049
 Fax: 813.805.2371

REVISIONS		
NO.	DESCRIPTION	DATE

DATE ISSUED: NOVEMBER 2011
 REVIEWED BY: PHH
 DRAWN BY: DJ
 DESIGNED BY: AC
 AEP PROJECT NUMBER
 # 2017262009
 © 2009 REYNOLDS, SMITH AND HILLS, INC.

SHEET TITLE
SECOND FLOOR
PLAN
TICKETING
FLOOR FINISHES

SHEET NUMBER
A805
 L2 TICKETING_CD100-ALTS.DWG
 100% CD



REVISIONS

NO.	DESCRIPTION	DATE

DATE ISSUED: NOVEMBER 2011

REVIEWED BY: PHH

DRAWN BY: DJ

DESIGNED BY: AC

AEP PROJECT NUMBER
2017262009

© 2009 REYNOLDS, SMITH AND HILLS INC.

SHEET TITLE

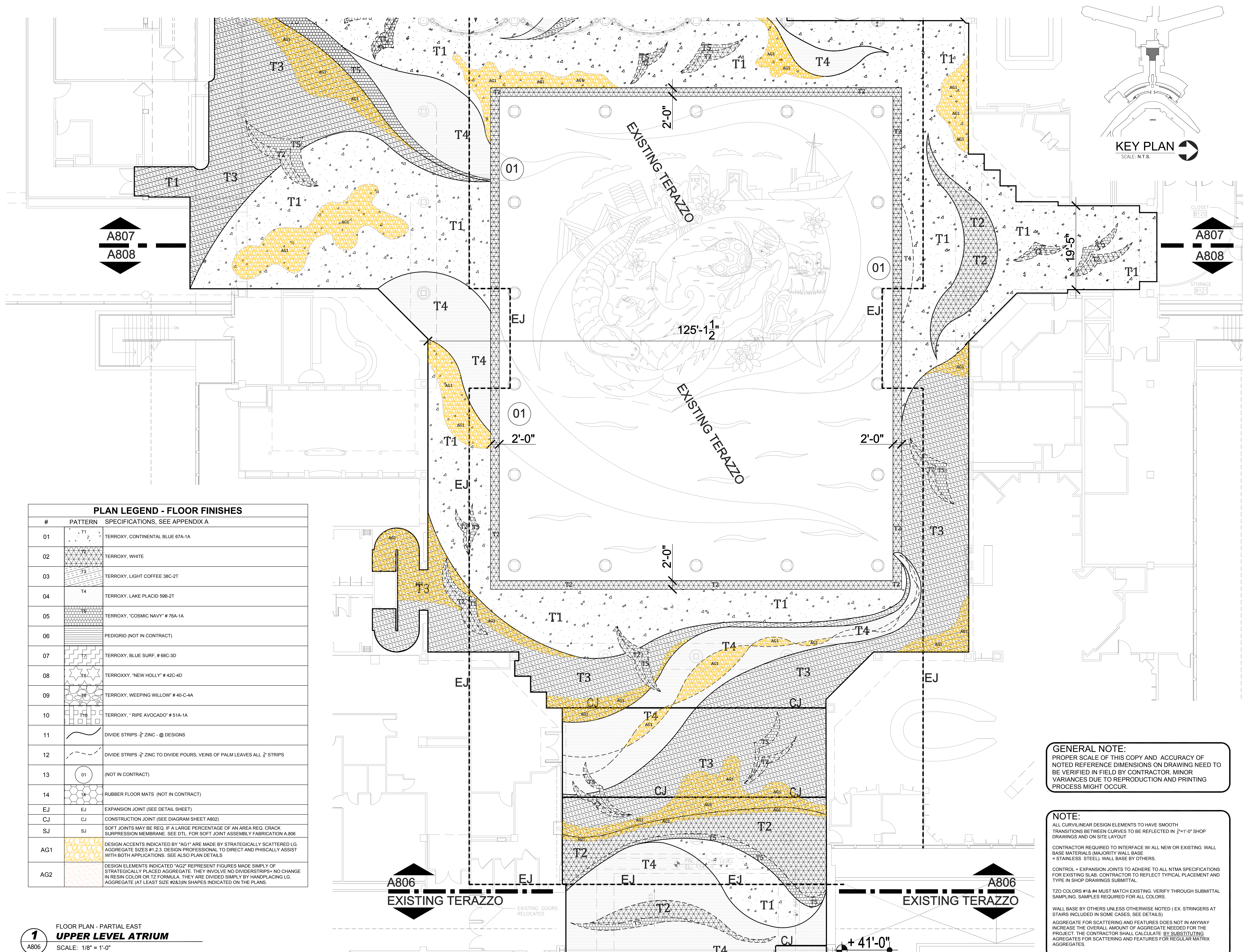
SECOND FLOOR
PLAN
**ATRIUM EAST
FLOOR FINISHES**

SHEET NUMBER

A806

L2 TICKETING_CD100-ALTS.DWG

100% CD



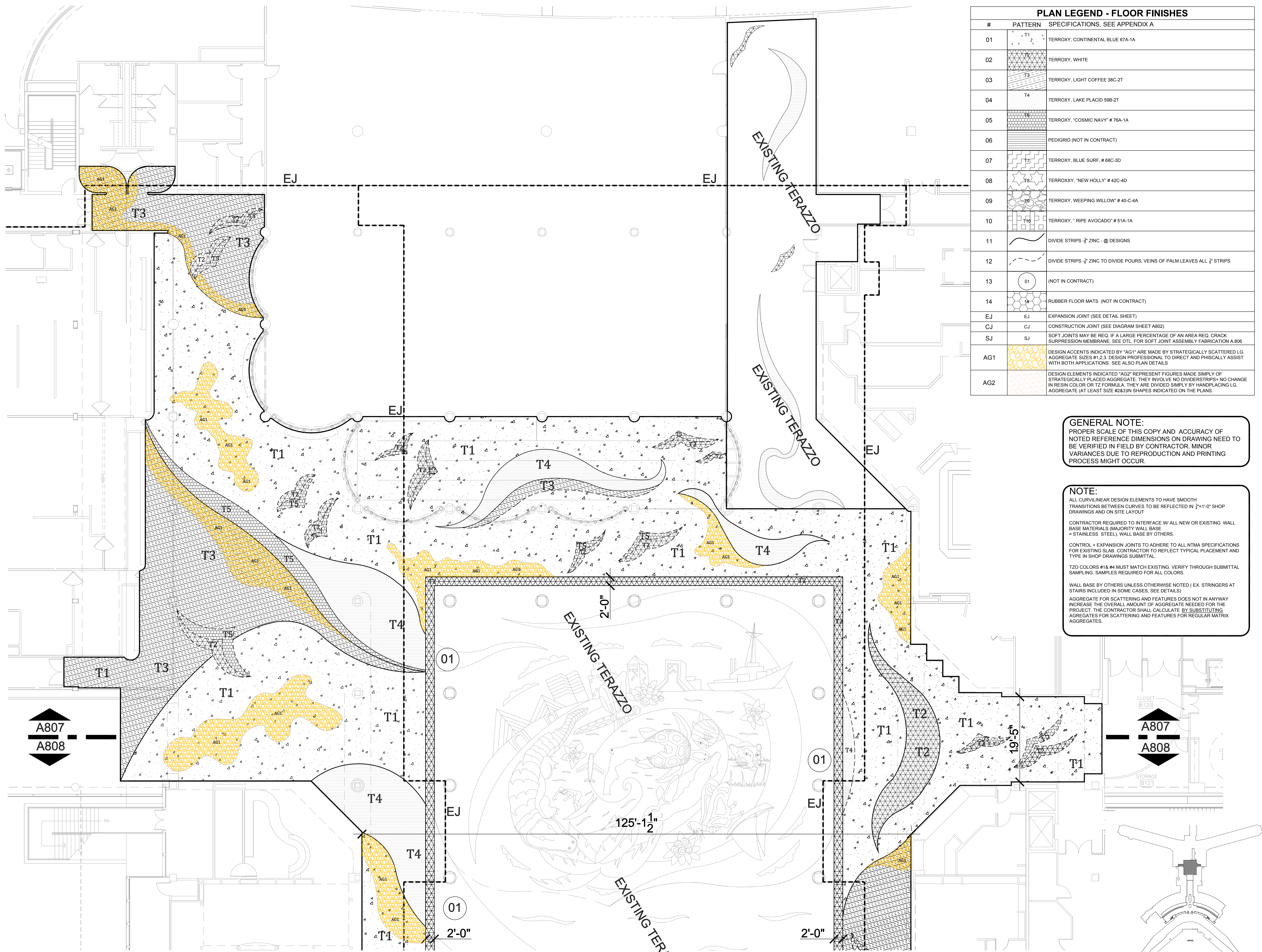
GENERAL NOTE:
PROPER SCALE OF THIS COPY AND ACCURACY OF NOTED REFERENCE DIMENSIONS ON DRAWING NEED TO BE VERIFIED IN FIELD BY CONTRACTOR. MINOR VARIANCES DUE TO REPRODUCTION AND PRINTING PROCESS MIGHT OCCUR.

NOTE:
ALL CURVILINEAR DESIGN ELEMENTS TO HAVE SMOOTH TRANSITIONS BETWEEN CURVES TO BE REFLECTED IN 3/4"=1'-0" SHOP DRAWINGS AND ON SITE LAYOUT.
CONTRACTOR REQUIRED TO INTERFACE W/ ALL NEW OR EXISTING WALL BASE MATERIALS (MAJORITY WALL BASE = STAINLESS STEEL), WALL BASE BY OTHERS.
CONTROL + EXPANSION JOINTS TO ADHERE TO ALL NTMA SPECIFICATIONS FOR EXISTING SLAB. CONTRACTOR TO REFLECT TYPICAL PLACEMENT AND TYPE IN SHOP DRAWINGS SUBMITTAL.
TZO COLORS #1& #4 MUST MATCH EXISTING. VERIFY THROUGH SUBMITTAL SAMPLING. SAMPLES REQUIRED FOR ALL COLORS.
WALL BASE BY OTHERS UNLESS OTHERWISE NOTED (EX. STRINGERS AT STAIRS INCLUDED IN SOME CASES, SEE DETAILS).
AGGREGATE FOR SCATTERING AND FEATURES DOES NOT IN ANYWAY INCREASE THE OVERALL AMOUNT OF AGGREGATE NEEDED FOR THE PROJECT. THE CONTRACTOR SHALL CALCULATE BY SUBSTITUTING AGGREGATES FOR SCATTERING AND FEATURES FOR REGULAR MATRIX AGGREGATES.

PLAN LEGEND - FLOOR FINISHES

#	PATTERN	SPECIFICATIONS, SEE APPENDIX A
01	T1	TERRAZZO, CONTINENTAL BLUE 67A-1A
02	T2	TERRAZZO, WHITE
03	T3	TERRAZZO, LIGHT COFFEE 38C-2T
04	T4	TERRAZZO, LAKE PLACID 59B-2T
05	T5	TERRAZZO, "COSMIC NAVY" # 78A-1A
06		PEDIGRID (NOT IN CONTRACT)
07	T7	TERRAZZO, BLUE SURF, # 68C-3D
08	T8	TERRAZZO, "NEW HOLLY" # 42C-4D
09	T9	TERRAZZO, "WEeping WILLOW" # 40-C-4A
10	T10	TERRAZZO, "RIPE AVOCADO" # 51A-1A
11		DIVIDE STRIPS - 1/2" ZINC - @ DESIGNS
12		DIVIDE STRIPS - 1/2" ZINC TO DIVIDE POURS, VEINS OF PALM LEAVES ALL 1/2" STRIPS
13	01	(NOT IN CONTRACT)
14	1A	RUBBER FLOOR MATS (NOT IN CONTRACT)
EJ	EJ	EXPANSION JOINT (SEE DETAIL SHEET)
CJ	CJ	CONSTRUCTION JOINT (SEE DIAGRAM SHEET A802)
SJ	SJ	SOFT JOINTS MAY BE REQ. IF A LARGE PERCENTAGE OF AN AREA REQ. CRACK SURPRESSION MEMBRANE. SEE DTL. FOR SOFT JOINT ASSEMBLY FABRICATION A.806
AG1		DESIGN ACCENTS INDICATED BY "AG1" ARE MADE BY STRATEGICALLY SCATTERED LG. AGGREGATE SIZES #1,2,3. DESIGN PROFESSIONAL TO DIRECT AND PHYSICALLY ASSIST WITH BOTH APPLICATIONS. SEE ALSO PLAN DETAILS
AG2		DESIGN ELEMENTS INDICATED "AG2" REPRESENT FIGURES MADE SIMPLY OF STRATEGICALLY PLACED AGGREGATE. THEY INVOLVE NO DIVIDER STRIPS - NO CHANGE IN RESIN COLOR OR T2 FORMULA. THEY ARE DIVIDED SIMPLY BY HAND PLACING LG. AGGREGATE (AT LEAST SIZE #2&3IN SHAPES INDICATED ON THE PLANS.

1
A806
FLOOR PLAN - PARTIAL EAST
UPPER LEVEL ATRIUM
SCALE: 1/8" = 1'-0"



PLAN LEGEND - FLOOR FINISHES		
#	PATTERN	SPECIFICATIONS, SEE APPENDIX A
01	T1	TERRORY, CONTINENTAL BLUE 67A-1A
02	T2	TERRORY, WHITE
03	T3	TERRORY, LIGHT COFFEE 38C-2T
04	T4	TERRORY, LAKE PLACID 59B-2T
05	T5	TERRORY, "COSMIC NAVY" # 76A-1A
06		PEDIGRID (NOT IN CONTRACT)
07	T7	TERRORY, BLUE SURF, # 68C-3D
08	T8	TERRORY, "NEW HOLLY" # 42C-4D
09	T9	TERRORY, "WEeping WILLOW" # 40-C-4A
10	T10	TERRORY, "RIPE AVOCADO" # 51A-1A
11		DIVIDE STRIPS - 1/2" ZINC - @ DESIGNS
12		DIVIDE STRIPS - 1/2" ZINC TO DIVIDE POURS, VEINS OF PALM LEAVES ALL 1/2" STRIPS
13	01	(NOT IN CONTRACT)
14	T4	RUBBER FLOOR MATS (NOT IN CONTRACT)
EJ	EJ	EXPANSION JOINT (SEE DETAIL SHEET)
CJ	CJ	CONSTRUCTION JOINT (SEE DIAGRAM SHEET A802)
SJ	SJ	SOFT JOINTS MAY BE REQ. IF A LARGE PERCENTAGE OF AN AREA REQ. CRACK SUPPRESSION MEMBRANE. SEE DTL. FOR SOFT JOINT ASSEMBLY FABRICATION A.806
AG1		DESIGN ACCENTS INDICATED BY "AG1" ARE MADE BY STRATEGICALLY SCATTERED LG. AGGREGATE SIZES #1,2,3. DESIGN PROFESSIONAL TO DIRECT AND PHYSICALLY ASSIST WITH BOTH APPLICATIONS. SEE ALSO PLAN DETAILS
AG2		DESIGN ELEMENTS INDICATED "AG2" REPRESENT FIGURES MADE SIMPLY OF STRATEGICALLY PLACED AGGREGATE. THEY INVOLVE NO DIVIDER STRIPS-NO CHANGE IN RESIN COLOR OR TZ FORMULA. THEY ARE DIVIDED SIMPLY BY HANDPLACING LG. AGGREGATE. (AT LEAST SIZE #2&3) IN SHAPES INDICATED ON THE PLANS.

GENERAL NOTE:
 PROPER SCALE OF THIS COPY AND ACCURACY OF NOTED REFERENCE DIMENSIONS ON DRAWING NEED TO BE VERIFIED IN FIELD BY CONTRACTOR. MINOR VARIANCES DUE TO REPRODUCTION AND PRINTING PROCESS MIGHT OCCUR.

NOTE:
 ALL CURVILINEAR DESIGN ELEMENTS TO HAVE SMOOTH TRANSITIONS BETWEEN CURVES TO BE REFLECTED IN 1/2"-1'-0" SHOP DRAWINGS AND ON SITE LAYOUT
 CONTRACTOR REQUIRED TO INTERFACE WITH ALL NEW OR EXISTING WALL BASE MATERIALS (MAJORITY WALL BASE = STAINLESS STEEL). WALL BASE BY OTHERS.
 CONTROL + EXPANSION JOINTS TO ADHERE TO ALL NTMA SPECIFICATIONS FOR EXISTING SLAB. CONTRACTOR TO REFLECT TYPICAL PLACEMENT AND TYPE IN SHOP DRAWINGS SUBMITTAL.
 TZO COLORS #1& #4 MUST MATCH EXISTING. VERIFY THROUGH SUBMITTAL SAMPLING. SAMPLES REQUIRED FOR ALL COLORS.
 WALL BASE BY OTHERS UNLESS OTHERWISE NOTED (EX. STRINGERS AT STAIRS INCLUDED IN SOME CASES, SEE DETAILS)
 AGGREGATE FOR SCATTERING AND FEATURES DOES NOT IN ANYWAY INCREASE THE OVERALL AMOUNT OF AGGREGATE NEEDED FOR THE PROJECT. THE CONTRACTOR SHALL CALCULATE BY SUBSTITUTING AGGREGATES FOR SCATTERING AND FEATURES FOR REGULAR MATRIX AGGREGATES.

RS&H
TEAM
 Jacksonville, Florida 32256
 904-256-2500 FAX 904-256-2501
 FL Cert. No. AAC001886 EB000620 LCC00210
 Reynolds, Smith and Hills, Inc.
 KBJ Architects, Inc.
 RINK DESIGN PARTNERSHIP INC.
 RENAISSANCE DESIGN BUILD GROUP

JACKSONVILLE
 AVIATION AUTHORITY

JACKSONVILLE
 INTERNATIONAL
 AIRPORT
 TERMINAL
 EXPANSION

PROJ#
 2017 262 009
JIA TERRAZZO FLOORING

RS&H
 Architectural, Engineering, Planning
 and Environmental Services

Reynolds, Smith and Hills, Inc.
 1748 Deerwood Park Boulevard South
 Jacksonville, Florida 32256
 904-256-2500 FAX 904-256-2501
 www.rsandh.com
 FL Cert. No. AAC001886 EB000620 LCC00210

KELLY TAAFFE
 Lic# ID 0002289
 FL# 13 0001146
 Kelly@kellytaaffedesign.com
 Tel.: 813.695.5049
 Fax: 813.805.2371

REVISIONS		
NO.	DESCRIPTION	DATE

DATE ISSUED: NOVEMBER 2011
 REVIEWED BY: PHH
 DRAWN BY: DJ
 DESIGNED BY: AC

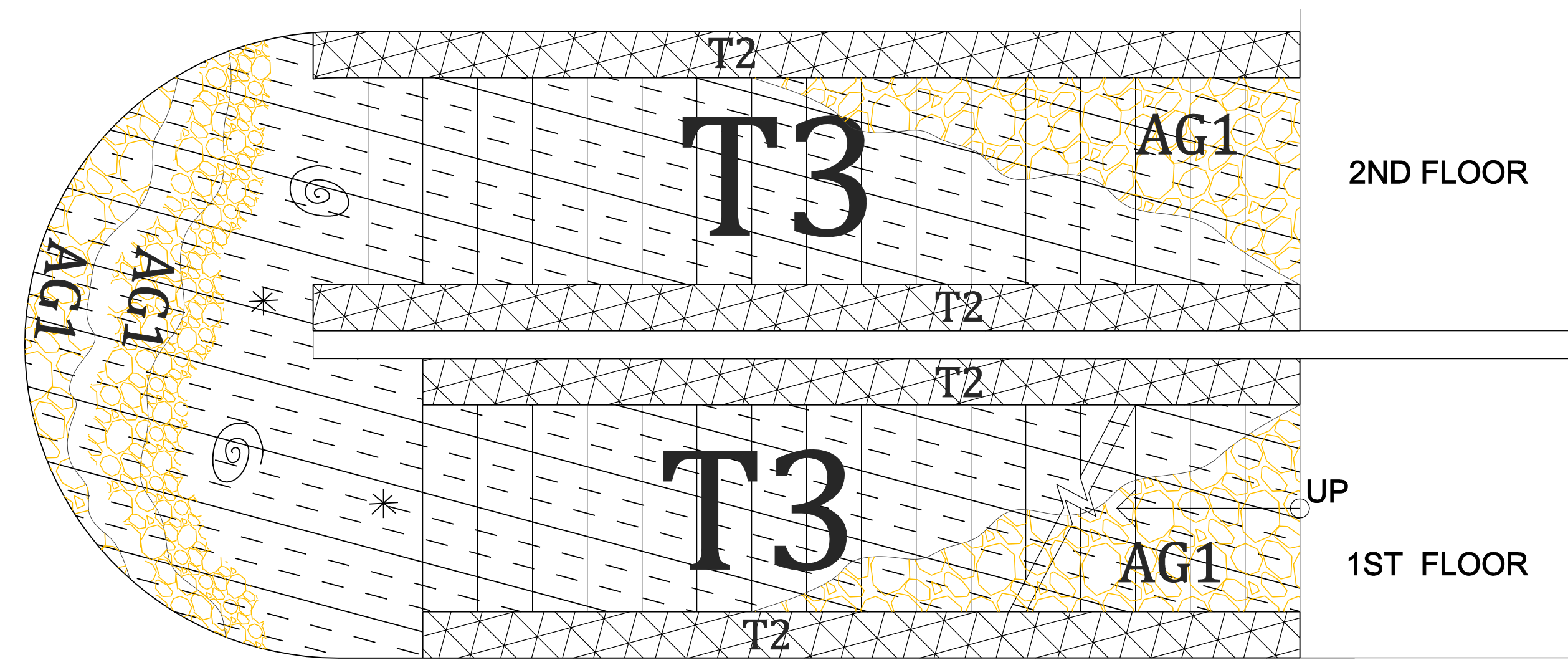
AEP PROJECT NUMBER
 # 2017262009
 © 2009 REYNOLDS, SMITH AND HILLS, INC.

SHEET TITLE
SECOND FLOOR
PLAN
ATRIUM WEST
FLOOR FINISHES

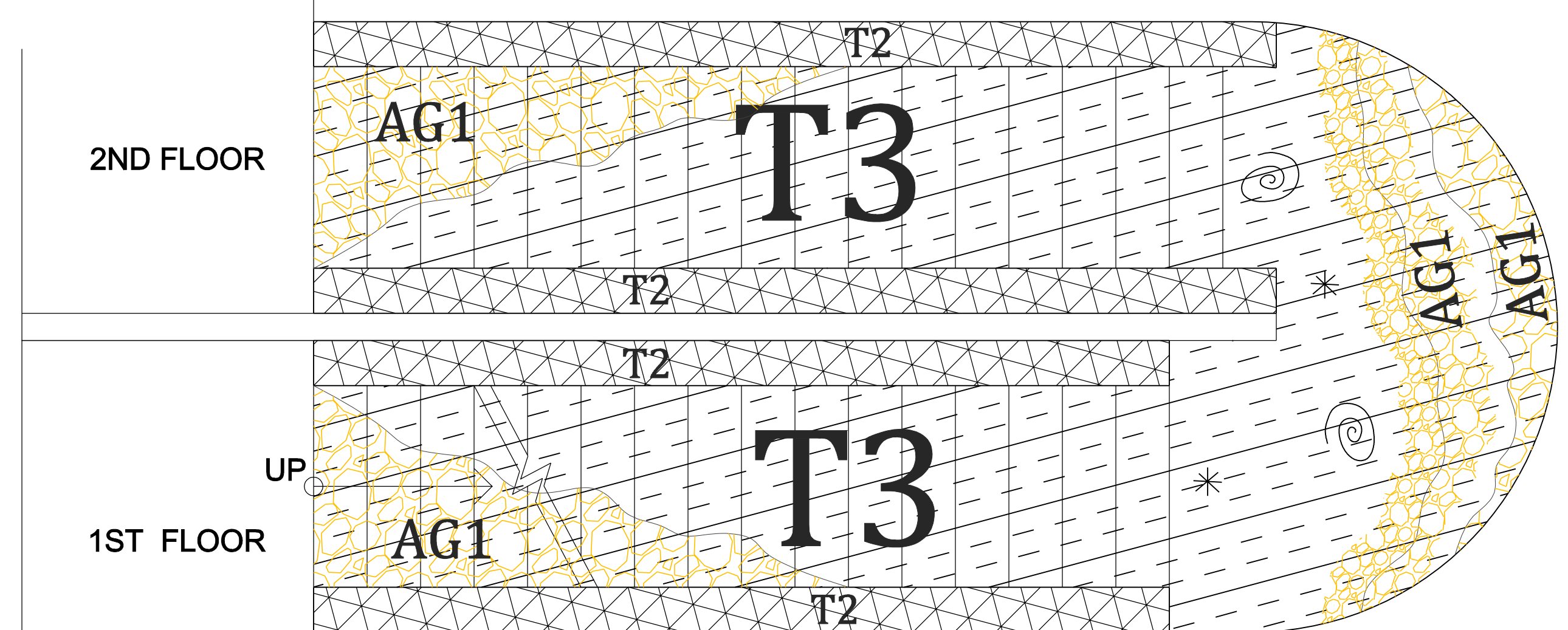
SHEET NUMBER
A807
 L2 TICKETING_CD100-ALTS.DWG
 100% CD

1
 A807
 FLOOR PLAN - PARTIAL WEST
UPPER LEVEL ATRIUM
 SCALE: 1/8" = 1'-0"

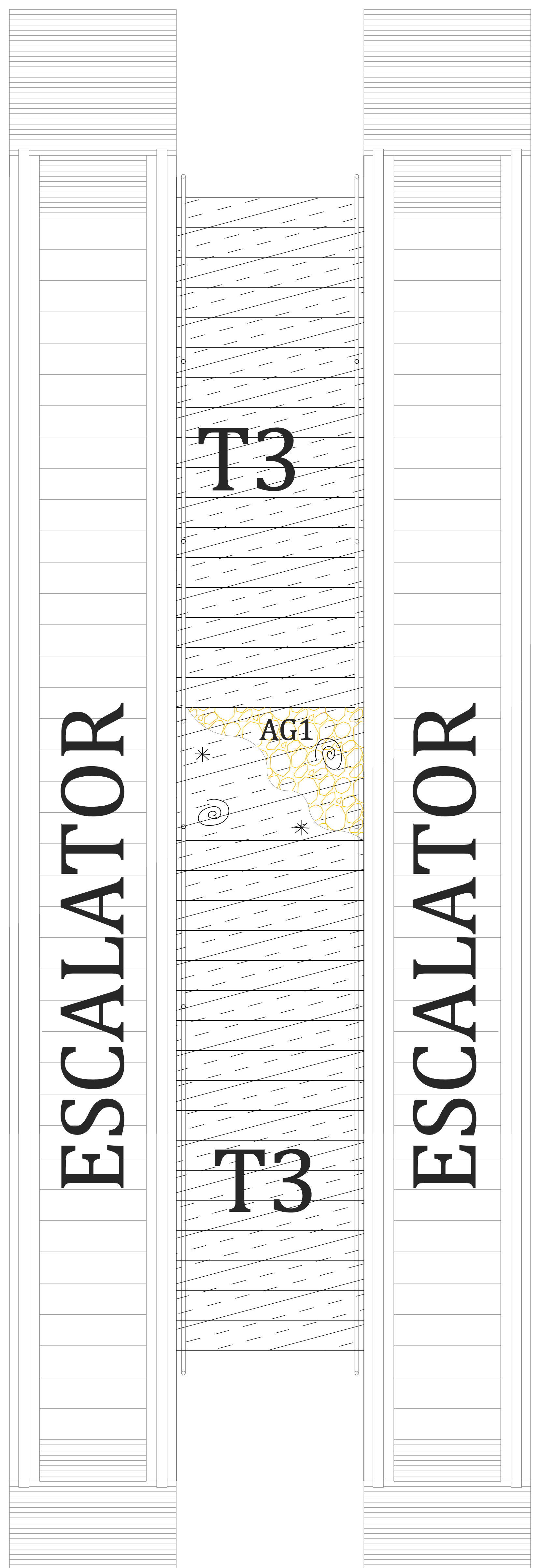
KEY PLAN
 SCALE: N.T.S.



2
A808
FLOOR PLAN - STAIRS
UPPER LEVEL SOUTH STAIR
SCALE: 1/2" = 1'-0"



1
A808
FLOOR PLAN - STAIRS
UPPER LEVEL NORTH STAIR
SCALE: 1/2" = 1'-0"

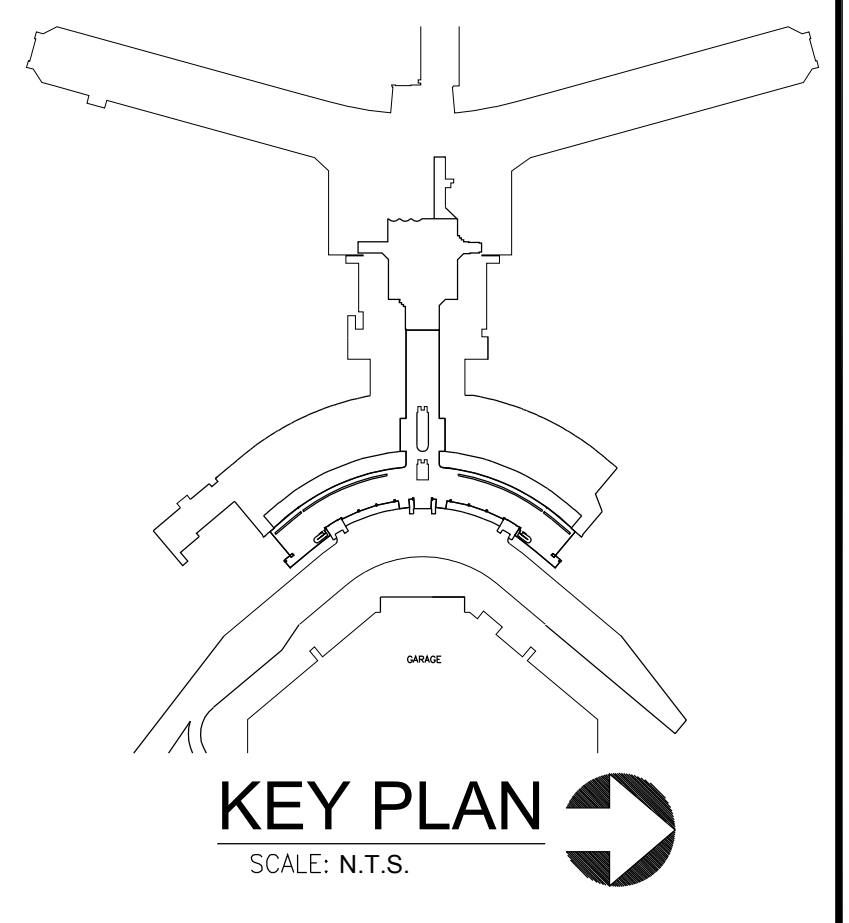


03
A808
THERE ARE 2 STAIRS OF THIS DESIGN
UPPER LEVEL STAIR, CENTER EAST SAME AS CENTER WEST STAIR
SCALE: 1/2" = 1'-0"

PLAN LEGEND - FLOOR FINISHES		
#	PATTERN	SPECIFICATIONS, SEE APPENDIX A
01	T1	TERROXY, CONTINENTAL BLUE 67A-1A
02	T2	TERROXY, WHITE
03	T3	TERROXY, LIGHT COFFEE 38C-2T
04	T4	TERROXY, LAKE PLACID 59B-2T
05	T5	TERROXY, "COSMIC NAVY" # 76A-1A
06		PEDIGRID (NOT IN CONTRACT)
07	T7	TERROXY, BLUE SURF, # 68C-3D
08	T8	TERROXY, "NEW HOLLY" # 42C-4D
09	T9	TERROXY, "WEEPING WILLOW" # 40-C-4A
10	T10	TERROXY, "RIPE AVOCADO" # 51A-1A
11		DIVIDE STRIPS - 1/2" ZINC @ DESIGNS
12		DIVIDE STRIPS - 1/2" ZINC TO DIVIDE POURS, VEINS OF PALM LEAVES ALL 1/2" STRIPS
13	01	(NOT IN CONTRACT)
14	T4	RUBBER FLOOR MATS (NOT IN CONTRACT)
EJ	EJ	EXPANSION JOINT (SEE DETAIL SHEET)
CJ	CJ	CONSTRUCTION JOINT (SEE DIAGRAM SHEET A802)
SJ	SJ	SOFT JOINTS MAY BE REQ. IF A LARGE PERCENTAGE OF AN AREA REQ. CRACK SURPRESSION MEMBRANE. SEE DTL. FOR SOFT JOINT ASSEMBLY FABRICATION A.806
AG1		DESIGN ACCENTS INDICATED BY "AG1" ARE MADE BY STRATEGICALLY SCATTERED LG. AGGREGATE SIZES #1,2,3. DESIGN PROFESSIONAL TO DIRECT AND PHYSICALLY ASSIST WITH BOTH APPLICATIONS. SEE ALSO PLAN DETAILS
AG2		DESIGN ELEMENTS INDICATED "AG2" REPRESENT FIGURES MADE SIMPLY OF STRATEGICALLY PLACED AGGREGATE. THEY INVOLVE NO DIVIDER STRIPS-NO CHANGE IN RESIN COLOR OR TZ FORMULA. THEY ARE DIVIDED SIMPLY BY HANDPLACING LG. AGGREGATE. (AT LEAST SIZE #2&3) IN SHAPES INDICATED ON THE PLANS.

GENERAL NOTE:
PROPER SCALE OF THIS COPY AND ACCURACY OF NOTED REFERENCE DIMENSIONS ON DRAWING NEED TO BE VERIFIED IN FIELD BY CONTRACTOR. MINOR VARIANCES DUE TO REPRODUCTION AND PRINTING PROCESS MIGHT OCCUR.

NOTE:
ALL CURVILINEAR DESIGN ELEMENTS TO HAVE SMOOTH TRANSITIONS BETWEEN CURVES TO BE REFLECTED IN 1/2"-1'-0" SHOP DRAWINGS AND ON SITE LAYOUT
CONTRACTOR REQUIRED TO INTERFACE WITH ALL NEW OR EXISTING WALL BASE MATERIALS (MAJORITY WALL BASE = STAINLESS STEEL). WALL BASE BY OTHERS.
CONTROL + EXPANSION JOINTS TO ADHERE TO ALL NTMA SPECIFICATIONS FOR EXISTING SLAB. CONTRACTOR TO REFLECT TYPICAL PLACEMENT AND TYPE IN SHOP DRAWINGS SUBMITTAL.
T20 COLORS #1& #4 MUST MATCH EXISTING. VERIFY THROUGH SUBMITTAL SAMPLING. SAMPLES REQUIRED FOR ALL COLORS.
WALL BASE BY OTHERS UNLESS OTHERWISE NOTED (EX. STRINGERS AT STAIRS INCLUDED IN SOME CASES, SEE DETAILS)
AGGREGATE FOR SCATTERING AND FEATURES DOES NOT IN ANYWAY INCREASE THE OVERALL AMOUNT OF AGGREGATE NEEDED FOR THE PROJECT. THE CONTRACTOR SHALL CALCULATE BY SUBSTITUTING AGGREGATES FOR SCATTERING AND FEATURES FOR REGULAR MATRIX AGGREGATES.



RS&H
TEAM
Jacksonville, Florida 32256
904-256-2500 FAX 904-256-2501
FL Cert.No. AAC01086 EB000520 LCC000210
Reynolds, Smith and Hills, Inc.
KBJ Architects, Inc.
RINK DESIGN PARTNERSHIP INC.
RENAISSANCE DESIGN BUILD GROUP

JACKSONVILLE
AVIATION AUTHORITY

JACKSONVILLE
INTERNATIONAL
AIRPORT
TERMINAL
EXPANSION

PROJ#
2017 262 009
JIA TERRAZZO FLOORING

RS&H
Architectural, Engineering, Planning
and Environmental Services

Reynolds, Smith and Hills, Inc.
1748 Deerwood Park Boulevard South
Jacksonville, Florida 32256
904-256-2500 FAX 904-256-2501
www.rsandh.com
FL Cert.No. AAC01086 EB000520 LCC000210

KELLY TAAFFE
L1# ID 0002289
FL# 13 0001146
kelly@kellytaaffedesign.com
Tel.: 813.695.5049
Fax: 813.805.2371

REVISIONS		
NO.	DESCRIPTION	DATE

DATE ISSUED: NOVEMBER 2011
REVIEWED BY: PHH
DRAWN BY: DJ
DESIGNED BY: AC

AEP PROJECT NUMBER
2017262009
© 2009 REYNOLDS, SMITH AND HILLS, INC.

SHEET TITLE
SECOND FLOOR
PLAN
STAIRS

SHEET NUMBER
A808
L2 TICKETING_CD100-ALTS.DWG
100% CD

GENERAL NOTE:
 PROPER SCALE OF THIS COPY AND ACCURACY OF NOTED REFERENCE DIMENSIONS ON DRAWING NEED TO BE VERIFIED IN FIELD BY CONTRACTOR. MINOR VARIANCES DUE TO REPRODUCTION AND PRINTING PROCESS MIGHT OCCUR.

NOTE:
 ALL CURVILINEAR DESIGN ELEMENTS TO HAVE SMOOTH TRANSITIONS BETWEEN CURVES TO BE REFLECTED IN 1/4"=1'-0" SHOP DRAWINGS AND ON SITE LAYOUT
 CONTRACTOR REQUIRED TO INTERFACE W/ ALL NEW OR EXISTING WALL BASE MATERIALS (MAJORITY WALL BASE = STAINLESS STEEL). WALL BASE BY OTHERS.
 CONTROL + EXPANSION JOINTS TO ADHERE TO ALL NTMA SPECIFICATIONS FOR EXISTING SLAB. CONTRACTOR TO REFLECT TYPICAL PLACEMENT AND TYPE IN SHOP DRAWINGS SUBMITTAL.
 TZO COLORS #1 & #4 MUST MATCH EXISTING. VERIFY THROUGH SUBMITTAL SAMPLING. SAMPLES REQUIRED FOR ALL COLORS.
 WALL BASE BY OTHERS UNLESS OTHERWISE NOTED (EX. STRINGERS AT STAIRS INCLUDED IN SOME CASES, SEE DETAILS)
 AGGREGATE FOR SCATTERING AND FEATURES DOES NOT IN ANYWAY INCREASE THE OVERALL AMOUNT OF AGGREGATE NEEDED FOR THE PROJECT. THE CONTRACTOR SHALL CALCULATE BY SUBSTITUTING AGGREGATES FOR SCATTERING AND FEATURES FOR REGULAR MATRIX AGGREGATES.

RS&H
TEAM
 Jacksonville, Florida 32256
 904-256-2500 FAX 904-256-2501
 FL Cert No. AAC001886 EB000562 LC000210
 Reynolds, Smith and Hills, Inc.
 KBJ Architects, Inc.
 RINK DESIGN PARTNERSHIP INC.
 RENAISSANCE DESIGN BUILD GROUP

JACKSONVILLE
 AVIATION AUTHORITY

JACKSONVILLE
 INTERNATIONAL
 AIRPORT
 TERMINAL
 EXPANSION

PROJ#
 2017 262 009
JIA TERRAZZO FLOORING

RS&H
 Architectural, Engineering, Planning
 and Environmental Services
 Reynolds, Smith and Hills, Inc.
 1748 Deerwood Park Boulevard South
 Jacksonville, Florida 32256
 904-256-2500 FAX 904-256-2501
 www.rsandh.com
 FL Cert No. AAC001886 EB000562 LC000210

KELLY TAAFFE
 Lich ID 0002289
 FL# 13 0001146
 Kelly@kellytaaffedesign.com
 Tel.: 813.695.5049
 Fax: 813.805.2371

REVISIONS

NO.	DESCRIPTION	DATE

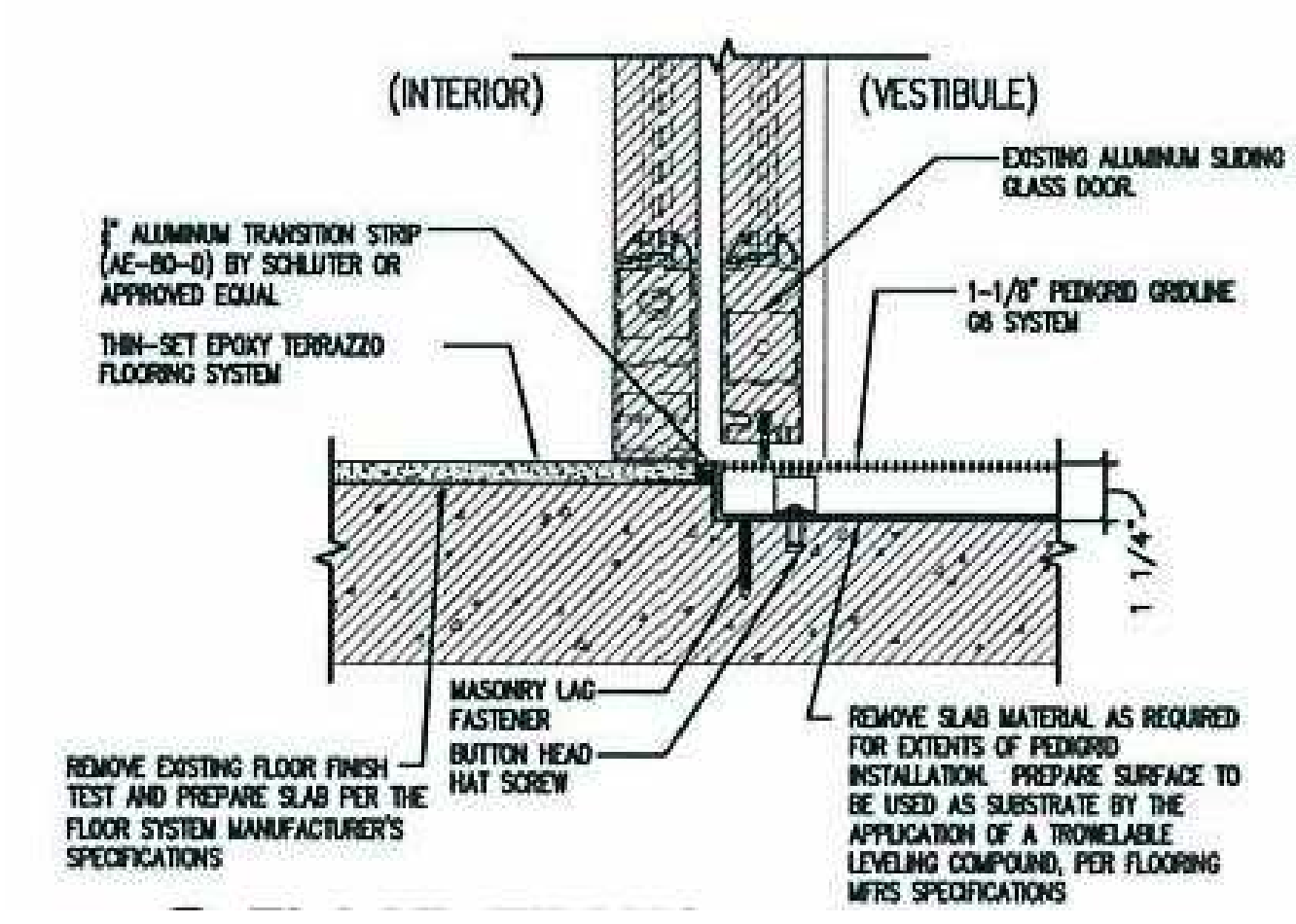
DATE ISSUED: NOVEMBER 2011
 REVIEWED BY: PHH
 DRAWN BY: DJ
 DESIGNED BY: AC

AEP PROJECT NUMBER
 # 2017262009
 © 2009 REYNOLDS, SMITH AND HILLS, INC.

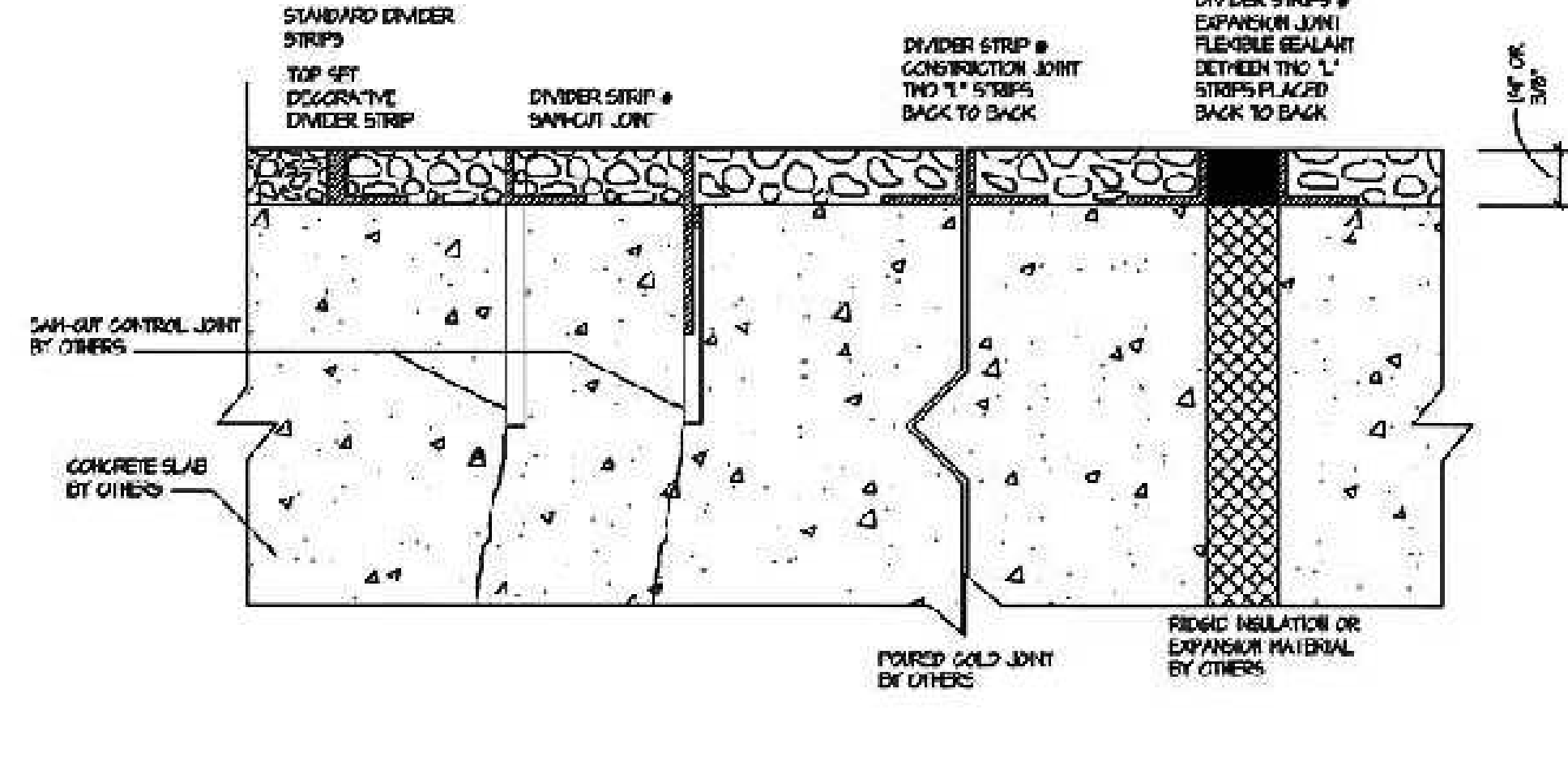
SHEET TITLE
SECOND FLOOR
PLAN
TICKETING
FLOOR FINISHES
DETAILS

SHEET NUMBER
A809
 L2_TICKETING_CD100-ALTS.DWG
 100% CD

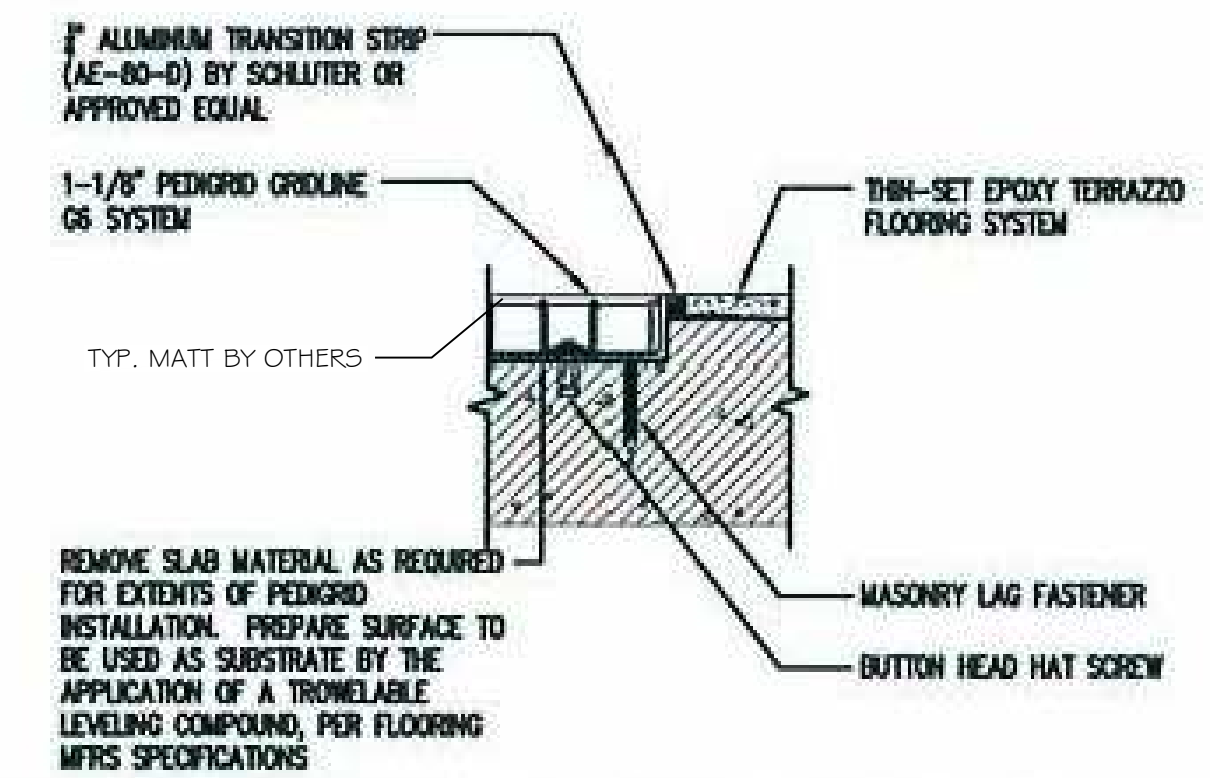
EPOXY TERRAZZO 1/4" OR 3/8"



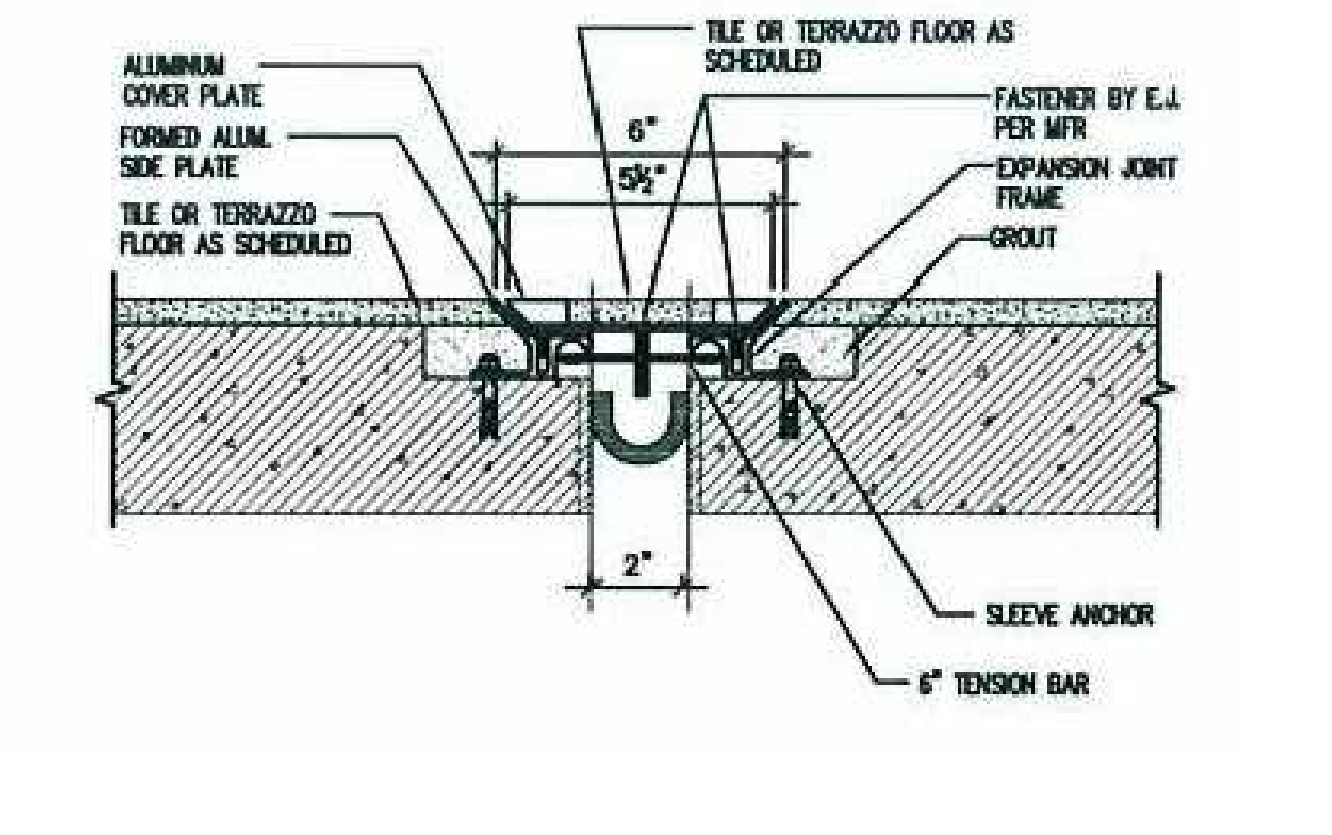
1 FLOOR TRANSITION @ DOOR
 A809 SCALE: N/A



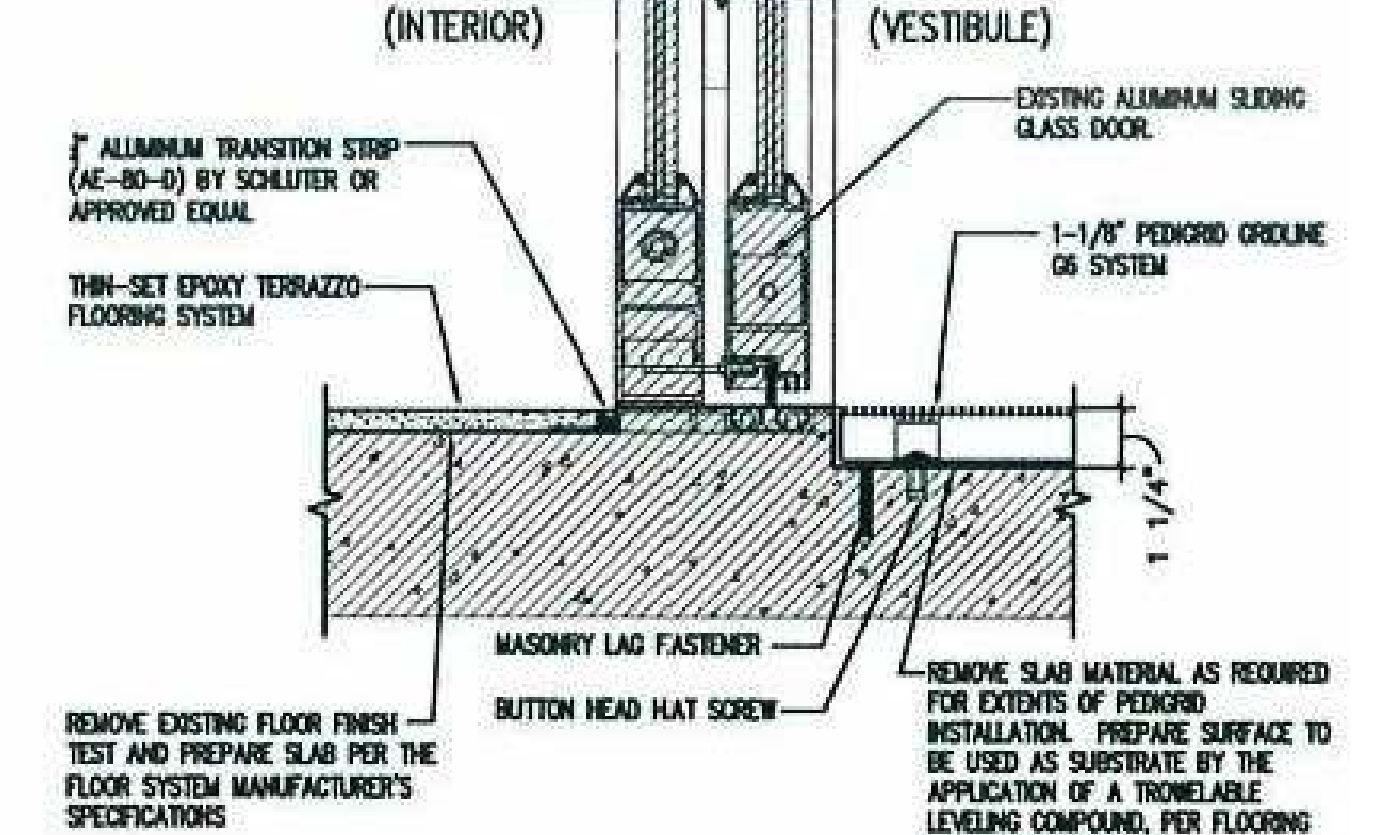
2 STANDARD DIVIDER STRIPS
 A809 SCALE: N/A



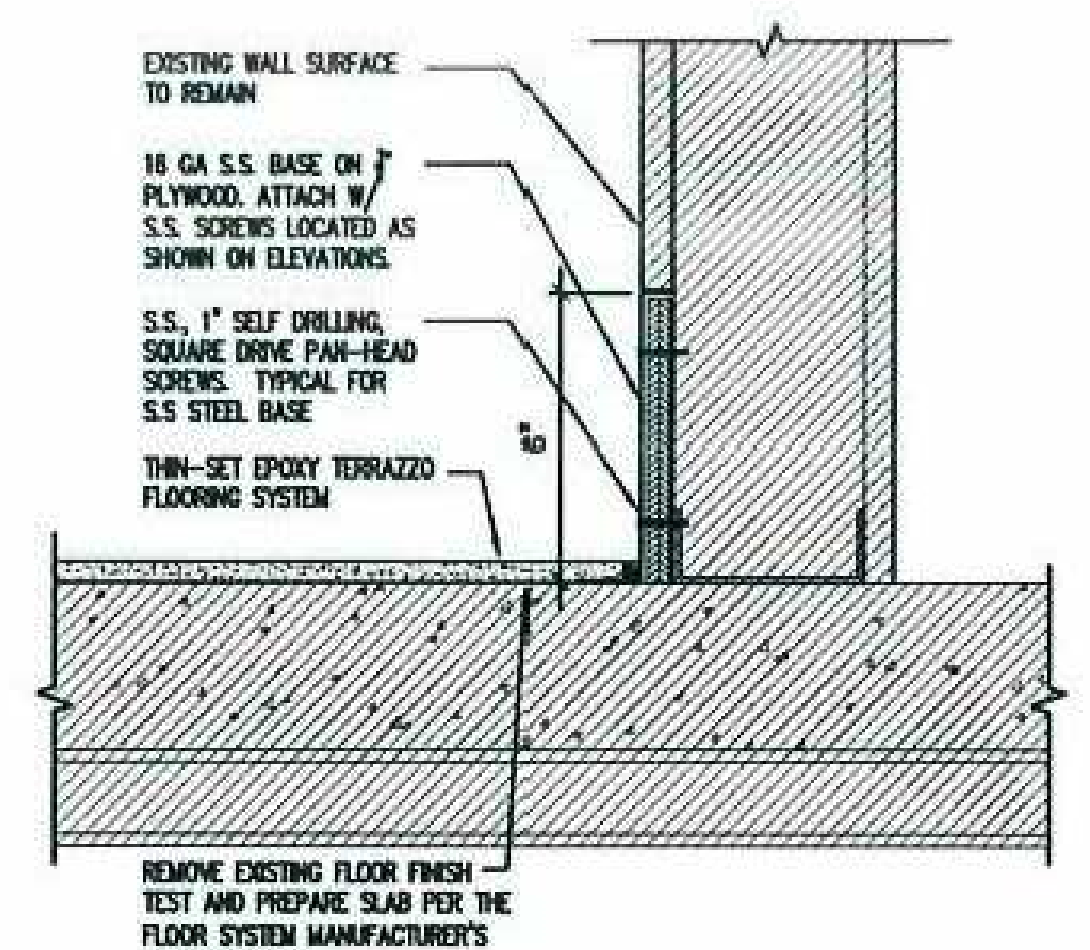
3 W.O. MATTIERR TRANSITION
 A809 SCALE: N/A



4 EXPANSION JOINT DTL.
 A809 SCALE: N/A

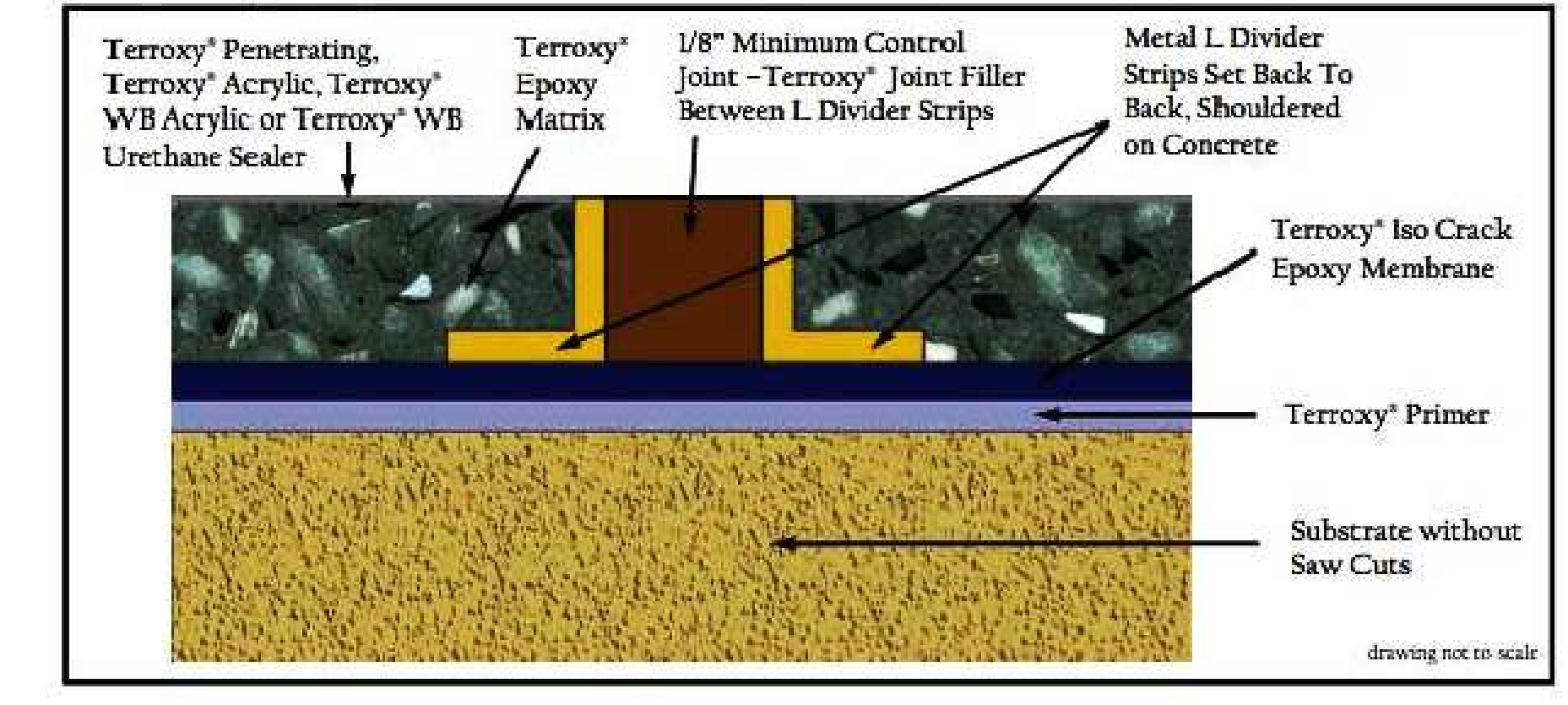


5 INTERIOR DOOR THRESHOLD
 A809 SCALE: N/A

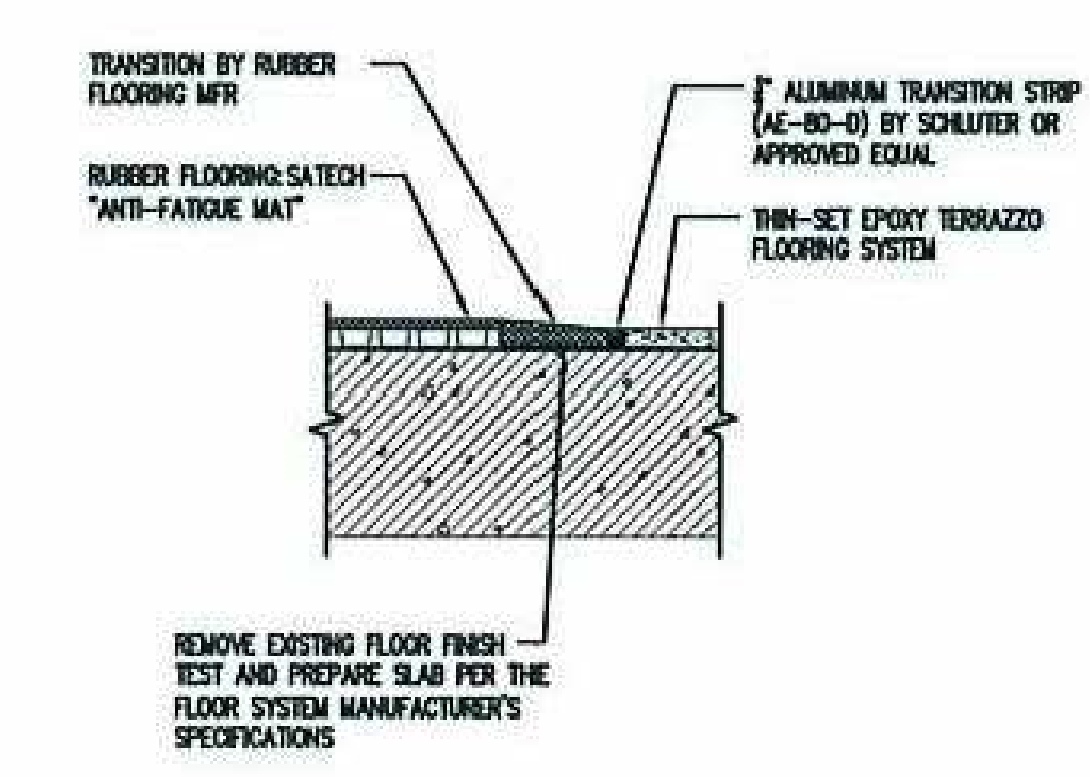


6 STAINLESS STEEL BASE DTL.
 A809 SCALE: N/A

Soft-Joint Detail
 In situations where saw cuts have not been made in substrate, it is recommended to include a Soft-Joint in terrazzo topping to compensate for any thermal expansion or contraction. Soft-joints have been used successfully on previous projects. There is no guarantee of complete crack prevention in the terrazzo due to a number of uncontrolled site conditions. If you proceed with this Soft-Joint detail, a maximum of 40 feet between joints is required.



08 SOFT JOINT DETAIL
 A809 SCALE: N/A



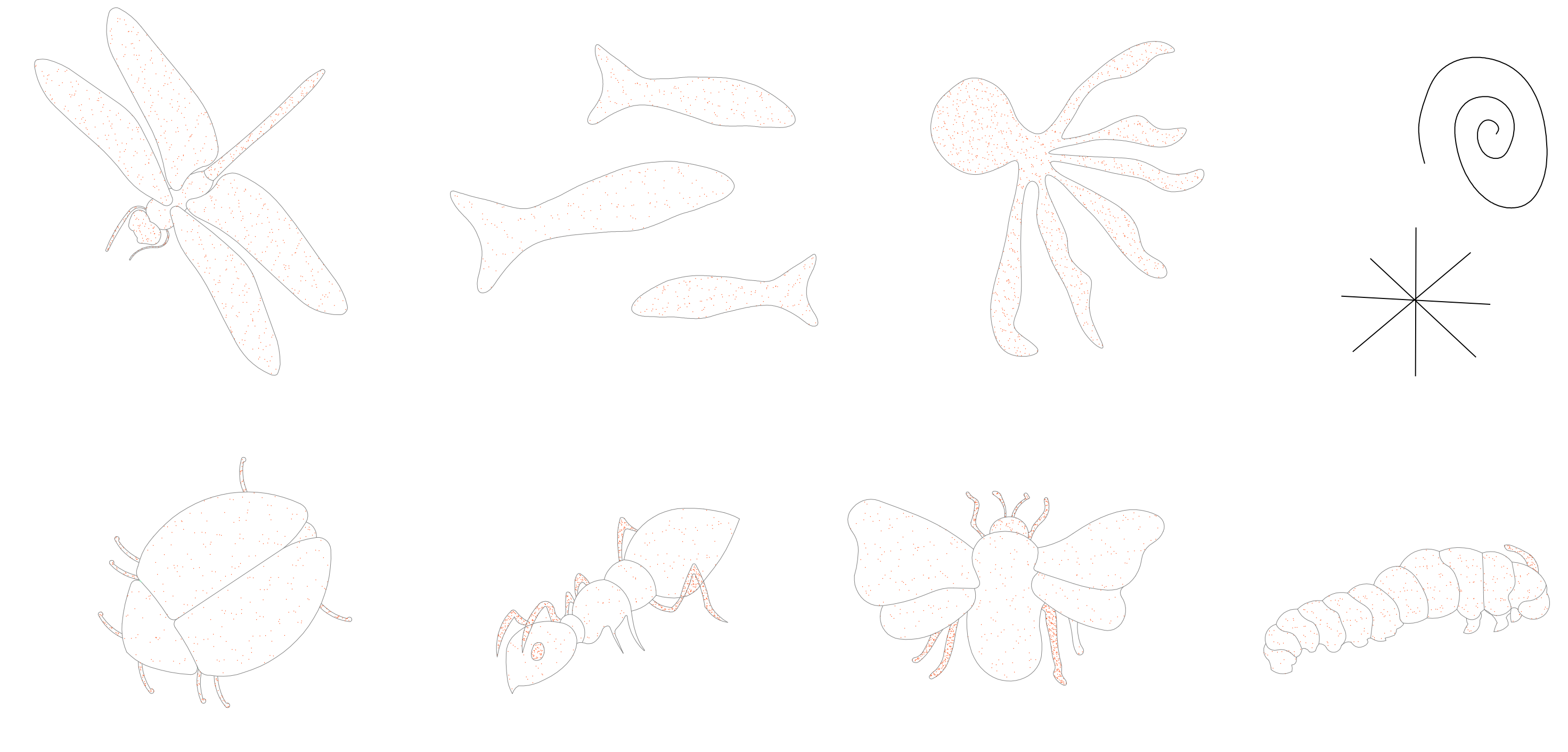
7 TERR I RUBBER FLOOR TRANS
 A809 SCALE: N/A



08 EXAMPLES OF AGGREGATE DESIGN FEATURES-DESIGN FEATURES ACHIEVED BY PRE-LAYING LARGER AGGREGATE INTO SPECIFIC SHAPES AND IMAGES.



09 EXAMPLE OF AGG SCATTERING-RANDOM VARIATIONS TO AGGREGATE ACHIEVED BY SCATTERING LARGER AGG. AMONG REGULAR MATRIX JUST AFTER IT IS POURED, WHILE IT IS IN LIQUID STATE



10 AG-2 DESIGN FEATURES
 A809 SCALE: N/A