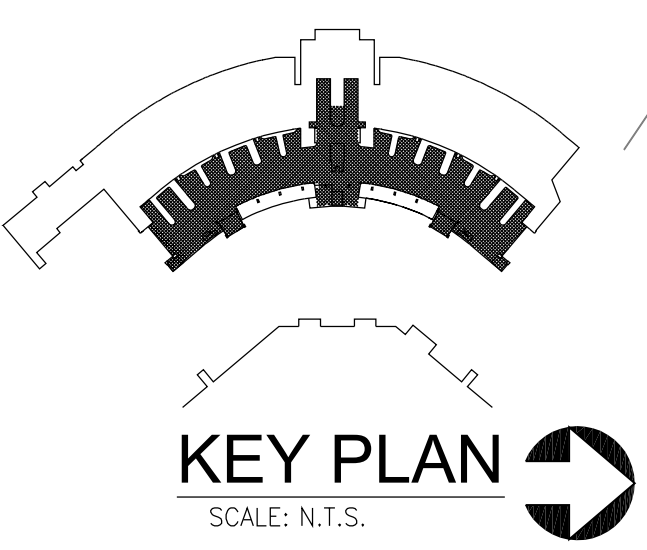


PLAN LEGEND - FLOOR FINISHES		
#	PATTERN	SPECIFICATIONS
01	T1	TERAZZO T1 JAX BLUE (NOT USED IN LEVEL 1)
02	T2	TERAZZO T16 SUBSTITUED FOR T2 WHITE
03	T3	TERAZZO T3 COFFEE
04	T4	TERAZZO T4 LAKE PLACID, AQUA
05	T5	TERAZZO T17 SUBSTITUED FOR T5 CORBOL
06		
07	T7	TERAZZO T7 PERIMWINKLE
18		TERAZZO T18 GULL BODIES RESIN: TERROXY STD. WHITE 50% RUST-FREE METAL SHAVINGS 20% BLANCO MEXICANO- #1&2 20% MIRROR- #1 & 2 10% FW MOP #3
19		TERAZZO T19 GULL SHADOWS RESIN: TERROXY # 788-4D INDIGO VELVET 20% DARK BLUE GLASS # FINE & 1 20% DARK GRAY GLASS # FINE & 1 50% RECYCLED PLATE GLASS # 0.1
10		
11		DIVIDE STRIPS 3/4" ZINC - @ DESIGNS
12		DIVIDE STRIPS 3/4" ZINC TO DIVIDE POURS
13	CJ	CONTROL JOINTS
14		RUBBER FLOOR MATS - BY OTHERS
AG1		AGGREGATE 1: SCATTERING; COLOR A = BLUE, COLOR B = GOLD, THIS AG. MIX STARTS THICKEST AT THE DIVIDER STRIP AND GRADUALLY GETS LIGHTER WITH DISTANCE. DESIGN ACCENTS INDICATED BY "AG1" ARE MADE BY STRATEGICALLY SCATTERED LG. AGGREGATE SIZES #1,2,3. DESIGN PROFESSIONAL TO DIRECT AND PHYSICALLY ASSIST WITH BOTH APPLICATIONS.
AG2	A02	AGGREGATE 2: FEATURES: AGENT#1 - FEATURE: AGENT#2 - FEATURE: SHADOWS. DESIGN ELEMENTS INDICATED "AG2" REPRESENT FIGURES MADE SIMPLY OF STRATEGICALLY PLACED AGGREGATE. THEY WILL HAVE NO DIVIDER STRIPS OR CHANGE IN RESIN COLOR OR T2 FORMULA. THEY ARE DIVIDED SIMPLY BY HANDPLACING LG. AGGREGATE (AT LEAST SIZE #2&3) IN SHAPES INDICATED ON THE PLANS. SEE APPENDIX A OF SPECS FOR MORE DETL. OF AG FEATURES. (C, GULLS, BISH, DRAGON FLIES)

**NOTE:** ALL CURVES MUST BE CONTINUOUS SMOOTH & ROUNDED; NO FLATTENING OR SHARP BENDING OF ANY CURVILINEAR LINES. CAD DESIGN MAY MISTAKENLY RENDER SOME THIS WAY, BUT IT MUST NOT BE TRANSFERRED TO THE FLOOR. CONSULT DESIGN PROFESSIONAL FOR ANY QUESTIONABLE LINES PRIOR TO POURING. TZO STRIPS MUST COME TO CLEAN SHARP POINTS USING A MITERED END (NO BUTTENDS). TZO CONTRACTOR TO PULL UP CARPET AROUND BAGGAGE BELTS & PLACE TZO STRIPS 1/2" OUT FROM BASE / TOE KICK OF BELTS.

**GENERAL NOTE:**  
 PROPER SCALE OF THIS COPY AND ACCURACY OF NOTED REFERENCE DIMENSIONS ON DRAWING NEED TO BE VERIFIED IN FIELD BY CONTRACTOR. MINOR VARIANCES DUE TO REPRODUCTION AND PRINTING PROCESS MIGHT OCCUR.



FLOOR PLAN - OVERALL  
**1**  
 BAGGAGE CLAIM LOWER LEVEL  
 SCALE: 1/16" = 1'-0"

**RS&H**  
 Architectural, Engineering, Planning  
 and Environmental Services  
 Reynolds, Smith and Hills, Inc.  
 1748 Chestwood Park, Boulevard South  
 Jacksonville, Florida 32256  
 904-256-2500 FAX 904-256-2501  
 www.rsandh.com  
 FL Cert Nos. AAC001886 EB0005620 LOC000210

**JAX**  
 Jacksonville  
 International  
 Airport  
**JACKSONVILLE**  
 AVIATION AUTHORITY

**JACKSONVILLE**  
**INTERNATIONAL**  
**AIRPORT**

**INTERIOR DESIGN**  
**FLOOR FINISHES**

**KTD Inc.**  
*Design*  
 KELLY TAAFFE DESIGN

Lic# ID 0002289  
 FL# 13 0001146  
 Kelly@kellytaaffedesign.com  
 Tel: 813.895.5049  
 Fax: 813.895.2371

REVISIONS		
NO.	DESCRIPTION	DATE
1	TZO LEGEND	11/02/11
2	TZO LEGEND T18, T19	12/04/11

DATE ISSUED: 9.25.2011  
 REVIEWED BY: KT  
 DRAWN BY: cAdvice.us - SB  
 DESIGNED BY: KTD, INC - KT  
 AEP PROJECT NUMBER  
 201-7262-009  
 © 2006 REYNOLDS, SMITH AND HILLS, INC.  
 SHEET TITLE

**LEVEL I**  
**BAGGAGE CLAIM**  
**TERAZZO**

SHEET NUMBER  
**A110**

LEVEL-1-CD100.DWG



# JAX

Jacksonville  
International  
Airport

## JACKSONVILLE INTERNATIONAL AIRPORT BAGGAGE CLAIM



Reynolds, Smith and Hills, Inc.

Jacksonville, Florida 32256  
904-256-2500 FAX 904-256-2501  
FL.Cert.Nos. AAC001886 EB0005620 LCC000210

### PROJECT

TERRAZZO FLOOR FINISHES  
100% CD



Lic# ID 0002289  
FL# 13 0001146  
[Kelly@kellytaaffedesign.com](mailto:Kelly@kellytaaffedesign.com)  
Tel.: 813.695.5049  
Fax: 813.805.2371

### DRAWING INDEX

- AI.110 FLOOR PLAN IN CONTRACT WORK AREA 1/16" = 1'-0"
- AI.111 FLOOR PLAN PARTIAL IN CONTRACT AREA 3/32" = 1'-0"
- AI.112 FLOOR PLAN PARTIAL IN CONTRACT AREA 3/32" = 1'-0"
- AI.113 DETAILS DETAILS STAIRS VARIES
- AI.114 DETAILS DETAILS TZO FEATURES VARIES



PLAN LEGEND - FLOOR FINISHES		
#	PATTERN	SPECIFICATIONS
01	T1	TERAZZO T1 JAX BLUE (NOT USED IN LEVEL 1)
02	T2	TERAZZO T16 SUBSTITUTED FOR T2 WHITE
03	T3	TERAZZO COFFEE
04	T4	TERAZZO T4 LAKE PLACID, AQUA
05	T5	TERAZZO T17 SUBSTITUTED FOR T5 COBOLT
06		
07	T7	TERAZZO T7 PERIWINKLE
18		TERAZZO T18: GULL BODIES RESIN: TERROXY STD. WHITE 50% RUST-FREE METAL SHAVINGS 20% BLANCO MEXICANO # 1&2 20% MIRROR # 1 & 2 10% FW MOP #3
19		TERAZZO T19: GULL SHADOWS RESIN: TERROXY # 788-4D INDIGO VELVET 20% DARK BLUE GLASS # FINE & 1 20% DARK GRAY GLASS # FINE & 1 55% RECYCLED PLATE GLASS # 0.1
10		
11		DIVIDE STRIPS 1/2" ZINC - @ DESIGNS
12		DIVIDE STRIPS 1/2" ZINC TO DIVIDE POURS
13	CJ	CONTROL JOINTS
14		RUBBER FLOOR MATS - BY OTHERS
AG1		AGGREGATE 1: SCATTERING, COLOR A = BLUE, COLOR B = GOLD, THIS AG MIX STARTS THICKEST AT THE DIVIDER STRIP AND GRADUALLY GETS LIGHTER WITH DISTANCE. DESIGN ACCENTS INDICATED BY "AG1" ARE MADE BY STRATEGICALLY SCATTERING I.G. AGGREGATE SIZES #1,2,3. DESIGN PROFESSIONAL TO DIRECT AND PHYSICALLY ASSIST WITH BOTH APPLICATIONS.
AG2		AGGREGATE 2: FEATURES, AGENT A - FEATURE, AGENT B - FEATURE, AGENT C - FEATURE, AGENT D - FEATURE, AGENT E - FEATURE, AGENT F - FEATURE, AGENT G - FEATURE, AGENT H - FEATURE, AGENT I - FEATURE, AGENT J - FEATURE, AGENT K - FEATURE, AGENT L - FEATURE, AGENT M - FEATURE, AGENT N - FEATURE, AGENT O - FEATURE, AGENT P - FEATURE, AGENT Q - FEATURE, AGENT R - FEATURE, AGENT S - FEATURE, AGENT T - FEATURE, AGENT U - FEATURE, AGENT V - FEATURE, AGENT W - FEATURE, AGENT X - FEATURE, AGENT Y - FEATURE, AGENT Z - FEATURE. DESIGN ELEMENTS INDICATED "AG2" REPRESENT FIGURES MADE SIMPLY OF STRATEGICALLY PLACED AGGREGATE. THEY INVOLVE NO DIVIDER STRIPS OR CHANGE IN RESIN COLOR OR T2 FORMULA. THEY ARE DIVIDED SIMPLY BY HANDPLACING I.G. AGGREGATE AT LEAST SIZE #30 IN SHAPES INDICATED ON THE PLANS. SEE APPENDIX A OF SPECS FOR MORE DETL. OF AG FEATURES (E.G. GULLS, DRAGON FLIES).

**NOTE:** ALL CURVES MUST BE CONTINUOUS SMOOTH & ROUNDED. NO FLATTENING OR SHARP BENDING OF ANY CURVILINEAR LINES. CAD DESIGN MAY MISTAKENLY RENDER A LINE THIS WAY, BUT IT MUST NOT BE TRANSFERRED TO THE FLOOR. CONSULT DESIGN PROFESSIONAL FOR ANY QUESTIONABLE LINES PRIOR TO POURING TZO. STRIPS MUST COME TO CLEAN SHARP POINTS USING A MITERED END (NO BUTTENDS). TZO CONTRACTOR TO PULL UP CARPET AROUND BAGGAGE BELTS & PLACE TZO STRIPS 1/2" OUT FROM BASE / TOE KICK OF BELTS.



Architectural, Engineering, Planning and Environmental Services  
 Reynolds, Smith and Hills, Inc.  
 10748 Deerwood Park Boulevard South  
 Jacksonville, Florida 32256  
 904-256-2500 FAX 904-256-2501  
 www.rsandh.com  
 FL Cert Nos. AAC001899 EB0005620 LGC000210



JACKSONVILLE INTERNATIONAL AIRPORT  
 AVIATION AUTHORITY

INTERIOR DESIGN FLOOR FINISHES



Lic# ID 0062289  
 FL# 13 0001148  
 Kelly@kellytaaffedesign.com  
 Tel.: 813.695.5049  
 Fax: 813.805.2371

REVISIONS		
NO.	DESCRIPTION	DATE
1	TZO LEGEND	11/02/11
2	TZO LEGEND T18, T19	12/04/11

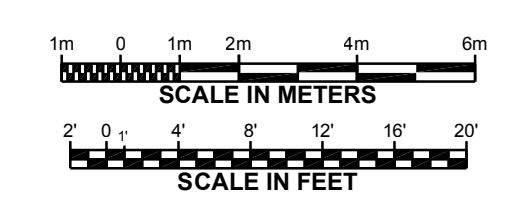
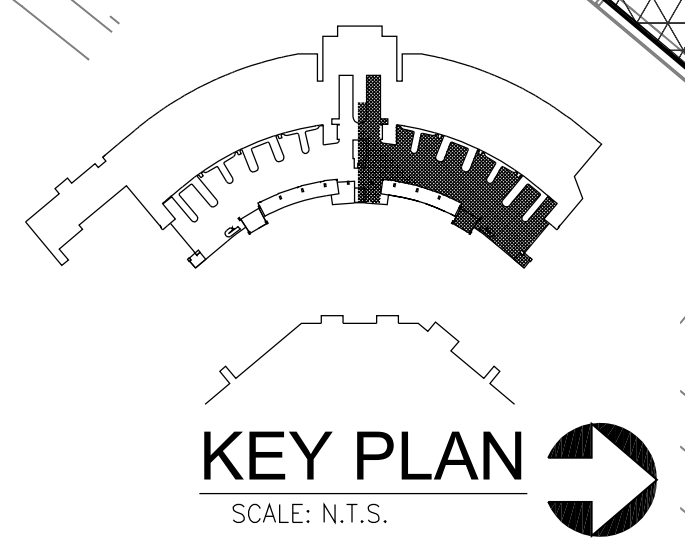
DATE ISSUED: 9.25.2011  
 REVIEWED BY: KT  
 DRAWN BY: cAdvice.us - SB  
 DESIGNED BY: KTD.INC - KT  
 AEP PROJECT NUMBER  
 201-7262-009  
 © 2006 REYNOLDS, SMITH AND HILLS INC.

SHEET TITLE  
**NORTH WING  
 LEVEL I  
 BAGGAGE CLAIM  
 TERAZZO**

SHEET NUMBER  
**AI.111**  
 LEVEL-1-CD100.DWG

**GENERAL NOTE:**  
 PROPER SCALE OF THIS COPY AND ACCURACY OF NOTED REFERENCE DIMENSIONS ON DRAWING NEED TO BE VERIFIED IN FIELD BY CONTRACTOR. MINOR VARIANCES DUE TO REPRODUCTION AND PRINTING PROCESS MIGHT OCCUR.

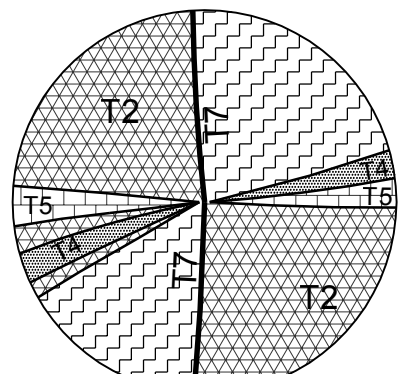
FLOOR PLAN- PARTIAL EAST  
**1**  
**BAGGAGE CLAIM NORTH WING**  
 SCALE: 3/32" = 1'-0"



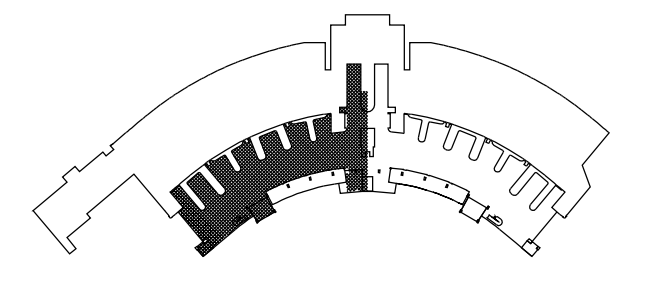
**PLAN LEGEND - FLOOR FINISHES**

#	PATTERN	SPECIFICATIONS
01	T1	TERAZZO T1 JAX BLUE (NOT USED IN LEVEL 1)
02		TERAZZO T2 SUBSTITUED FOR T1 WHITE
03		T3 TERAZZO COFFEE
04	T4	TERAZZO T4 LAKE PLACID, AQUA
05		TERAZZO T5 SUBSTITUED FOR T5 COBALT
06		
07		TERAZZO T7 PERWINKLE
18		TERAZZO T18: GULL BODIES RESIN: TERROXY STD. WHITE 50% RUST-FREE METAL SHAVINGS 20% BLANCO MEXICANO- #1&2 20% MIRROR- #1&2 10% FW MOP #3
19		TERAZZO T19: GULL SHADOWS RESIN: TERROXY #788-4D INDIGO VELVET 25% DARK BLUE GLASS # FINE & 1 20% DARK GRAY GLASS # FINE & 1 50% RECYCLED PLATE GLASS #0.1
10		
11		DIVIDE STRIPS - ZINC - @ DESIGNS
12		DIVIDE STRIPS - ZINC TO DIVIDE POURS
13	CJ	CONTROL JOINTS
14		RUBBER FLOOR MATS - BY OTHERS
AG1		AGGREGATE 1: SCATTERING; COLOR A = BLUE, COLOR B = GOLD, THIS AG MIX STARTS THICKEST AT THE DIVIDER STRIP AND GRADUALLY GETS LIGHTER WITH DISTANCE. DESIGN ACCENTS INDICATED BY "AG1" ARE MADE BY STRATEGICALLY SCATTERED LG. AGGREGATE SIZES #1,2,3. DESIGN PROFESSIONAL TO DIRECT AND PHYSICALLY ASSIST WITH BOTH APPLICATIONS.
AG2		AGGREGATE 2: FEATURES; ACCENT-A---FEATURE---ACCENT-B---FEATURE---SHAWBOW--- DESIGN ELEMENTS INDICATED "AG2" REPRESENT FIGURES MADE SIMPLY OF STRATEGICALLY PLACED AGGREGATE. THEY INVOLVE NO DIVIDER STRIPS OR CHANGE IN RESIN COLOR OR T2 FORMULA. THEY ARE DIVIDED SIMPLY BY HANDPLACING LG. AGGREGATE (AT LEAST SIZE #2&3) IN SHAPES INDICATED ON THE PLANS. SEE APPENDIX A OF SPECS FOR MORE DETL. OF AG FEATURES (I.E. GULLS, FISH, DRAGON FLES.

**NOTE:** ALL CURVES MUST BE CONTINUOUS SMOOTH & ROUNDED. NO FLATTENING OR SHARP BENDING OF ANY CURVILINEAR LINES. CAD DESIGN MAY MISTAKENLY RENDER A LINE THIS WAY, BUT IT MUST NOT BE TRANSFERRED TO THE FLOOR. CONSULT DESIGN PROFESSIONAL FOR ANY QUESTIONABLE LINES PRIOR TO POURING TZO. STRIPS MUST COME TO CLEAN SHARP POINTS USING A MITERED END (NO BUTTENDS). TZO CONTRACTOR TO PULL UP CARPET AROUND BAGGAGE BELTS & PLACE TZO STRIPS 1/2" OUT FROM BASE / TOE KICK OF BELTS.



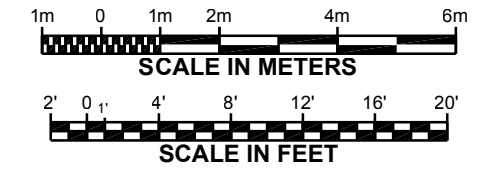
**TZO DETAIL NOTE:**  
 3/8" STRIP FRAMING T7 TO CONTINUE THROUGH INTERSECTION OF ALL CONJOINING STRIPS. WHENEVER ONE LINE APPEARS TO CROSS OVER TOP OF OTHER LINES IT (STRIPS) MUST BE CONTINUOUS THROUGH THE INTERSECTION.



**KEY PLAN**  
 SCALE: N.T.S.

**1**  
 AI.1.1.2

FLOOR PLAN - PARTIAL WEST  
**BAGGAGE CLAIM SOUTH WING**  
 SCALE: 3/32" = 1'-0"



**GENERAL NOTE:**  
 PROPER SCALE OF THIS COPY AND ACCURACY OF NOTED REFERENCE DIMENSIONS ON DRAWING NEED TO BE VERIFIED IN FIELD BY CONTRACTOR. MINOR VARIANCES DUE TO REPRODUCTION AND PRINTING PROCESS MIGHT OCCUR.

**RS&H**  
 Architectural, Engineering, Planning and Environmental Services  
 Reynolds, Smith and Hills, Inc.  
 10748 Deerwood Park Boulevard South  
 Jacksonville, Florida 32256  
 904-256-2500 FAX 904-256-2501  
 www.rsandh.com  
 FL Cert. Nos. AAC001886 EB0005820 LGC000210

**JAX**  
 Jacksonville International Airport  
**JACKSONVILLE**  
 AVIATION AUTHORITY

**JACKSONVILLE**  
 INTERNATIONAL  
 AIRPORT

**INTERIOR DESIGN**  
**FLOOR FINISHES**

**KTD Inc.**  
*Design*  
 KELLY TAAFFE DESIGN

Lic# ID 0002289  
 FL# 13 0001146  
 Kelly@kellytaaffedesign.com  
 Tel: 813.855.5049  
 Fax: 813.805.2371

**REVISIONS**

NO.	DESCRIPTION	DATE
1	TZO LEGEND	11/02/11
2	TZO LEGEND T18, T19	12/04/11

DATE ISSUED: 9.25.2011  
 REVIEWED BY: KT  
 DRAWN BY: cAdvice.us - SB  
 DESIGNED BY: KTD.INC - KT  
 AEP PROJECT NUMBER  
 201-7262-009  
 © 2006 REYNOLDS, SMITH AND HILLS INC.

SHEET TITLE  
**SOUTH WING**  
**LEVEL I**  
**BAGGAGE CLAIM**  
**TERAZZO**

SHEET NUMBER

**AI.112**  
 LEVEL-1-CD100.DWG

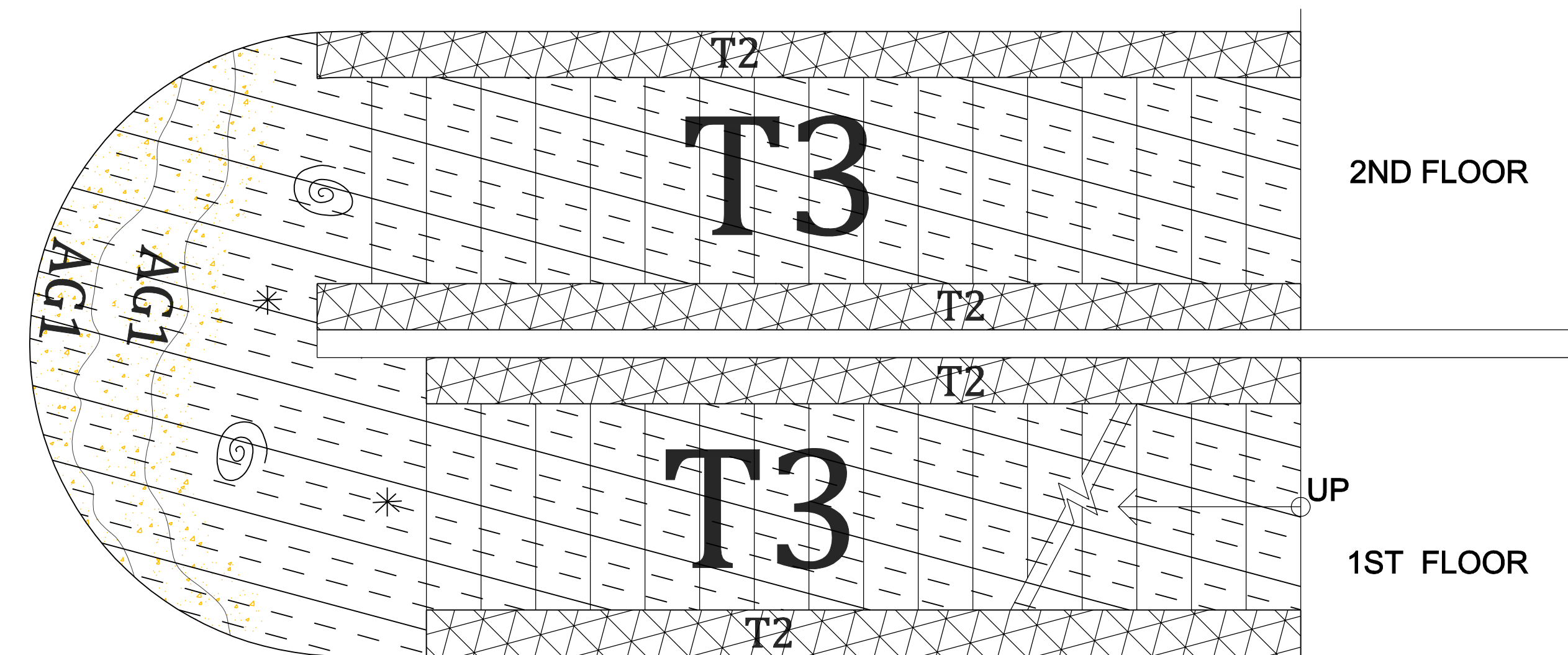
# BID ALTERNATE

**GENERAL NOTE:**  
 PROPER SCALE OF THIS COPY AND ACCURACY OF NOTED REFERENCE DIMENSIONS ON DRAWING NEED TO BE VERIFIED IN FIELD BY CONTRACTOR. MINOR VARIANCES DUE TO REPRODUCTION AND PRINTING PROCESS MIGHT OCCUR.

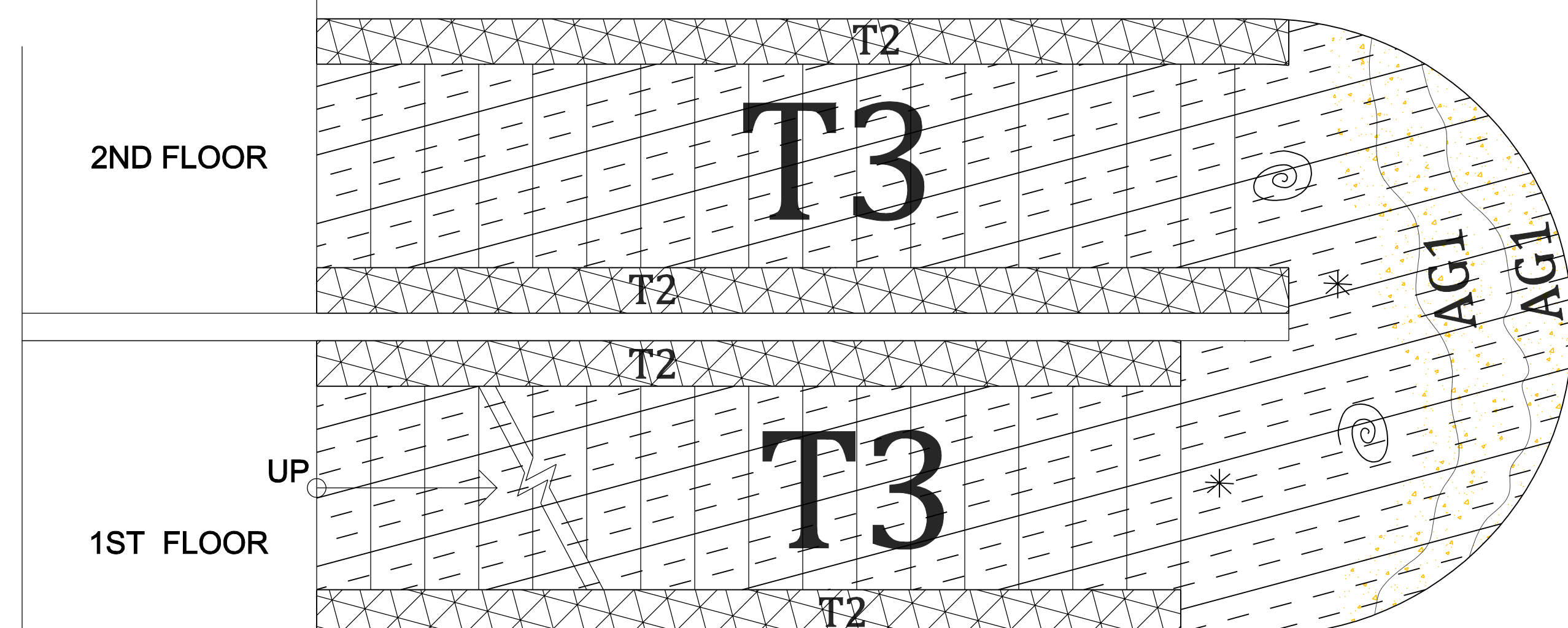
**NOTE:**  
 ALL CURVILINEAR DESIGN ELEMENTS TO HAVE SMOOTH TRANSITIONS BETWEEN CURVES TO BE REFLECTED IN 1/4"=1'-0" SHOP DRAWINGS AND ON SITE LAYOUT. CONTRACTOR REQUIRED TO INTERFACE W/ ALL NEW OR EXISTING WALL BASE MATERIALS (MAJORITY WALL BASE = STAINLESS STEEL), WALL BASE BY OTHERS.  
 CONTROL + EXPANSION JOINTS TO ADHERE TO ALL NTMA SPECIFICATIONS FOR EXISTING SLAB. CONTRACTOR TO REFLECT TYPICAL PLACEMENT AND TYPE IN SHOP DRAWINGS SUBMITTAL.  
 WALL BASE BY OTHERS UNLESS OTHERWISE NOTED (EX. STRINGERS AT STAIRS INCLUDED IN SOME CASES, SEE DETAILS).  
 AGGREGATE FOR SCATTERING AND FEATURES DOES NOT IN ANYWAY INCREASE THE OVERALL AMOUNT OF AGGREGATE NEEDED FOR THE PROJECT. THE CONTRACTOR SHALL CALCULATE BY SUBSTITUTING AGGREGATES FOR SCATTERING AND FEATURES FOR REGULAR MATRIX AGGREGATES.

PLAN LEGEND - FLOOR FINISHES		
#	PATTERN	SPECIFICATIONS
01	T1	TERAZZO T1 JAX BLUE (NOT USED IN LEVEL 1)
02	T18	TERAZZO T18 SUBSTITUED FOR T2 WHITE
03	T3	T3 TERAZZO COFFEE
04	T4	TERAZZO T4 LAKE PLACID, AQUA
05	T17	TERAZZO T17 SUBSTITUED FOR T5 COBALT
06		
07	T7	TERAZZO T7 PERIWINKLE
18	T18	TERAZZO T18: GULL BODIES RESIN: TERROXY STD. WHITE 50% RUST-FREE METAL SHAVINGS 20% BLANCO MEXICANO # 182 20% MIRROR # 1 82 10% PW MOP #3
19	T19	TERAZZO T19: GULL SHADOWS RESIN: TERROXY # 788-40 INDIGO VELVET 20% DARK BLUE GLASS # FINE & 1 20% DARK GRAY GLASS # FINE & 1 55% RECYCLED PLATE GLASS #E1
10		
11		DIVIDE STRIPS - ZINC - @ DESIGNS
12		DIVIDE STRIPS - ZINC TO DIVIDE POURS
13	CJ	CONTROL JOINTS
14		RUBBER FLOOR MATS - BY OTHERS
AG1		AGGREGATE 1: SCATTERING; COLOR A = BLUE, COLOR B = GOLD. THIS AG. MIX STARTS THICKEST AT THE DIVIDER STRIP AND GRADUALLY GETS LIGHTER WITH DISTANCE. DESIGN ACCENTS INDICATED BY "AG1" ARE MADE BY STRATEGICALLY SCATTERED LG. AGGREGATE SIZES #1,2,3. DESIGN PROFESSIONAL TO DIRECT AND PHYSICALLY ASSIST WITH BOTH APPLICATIONS.
AG2	AG2	AGGREGATE 2: FEATURE, ACCENT, A - FEATURE, ACCENT, B - FEATURE, SHADOW. DESIGN ELEMENTS INDICATED "AG2" REPRESENT FIGURES MADE SIMPLY OF STRATEGICALLY PLACED AGGREGATE. THEY INVOLVE NO DIVIDERS OR STRIPS OR CHANGE IN RESIN COLOR OR T2 FORMULA. THEY ARE DIVIDED SUPPLY BY HAND PLACING LG. AGGREGATE AT LEAST SIZE #3/32" SHAPES INDICATED ON THE PLANS. SEE APPENDIX A OF SPECS FOR MORE DETL. OF AG FEATURES: CIRCLES, SQUARES, TRIANGLES, DRAGON FLIES.

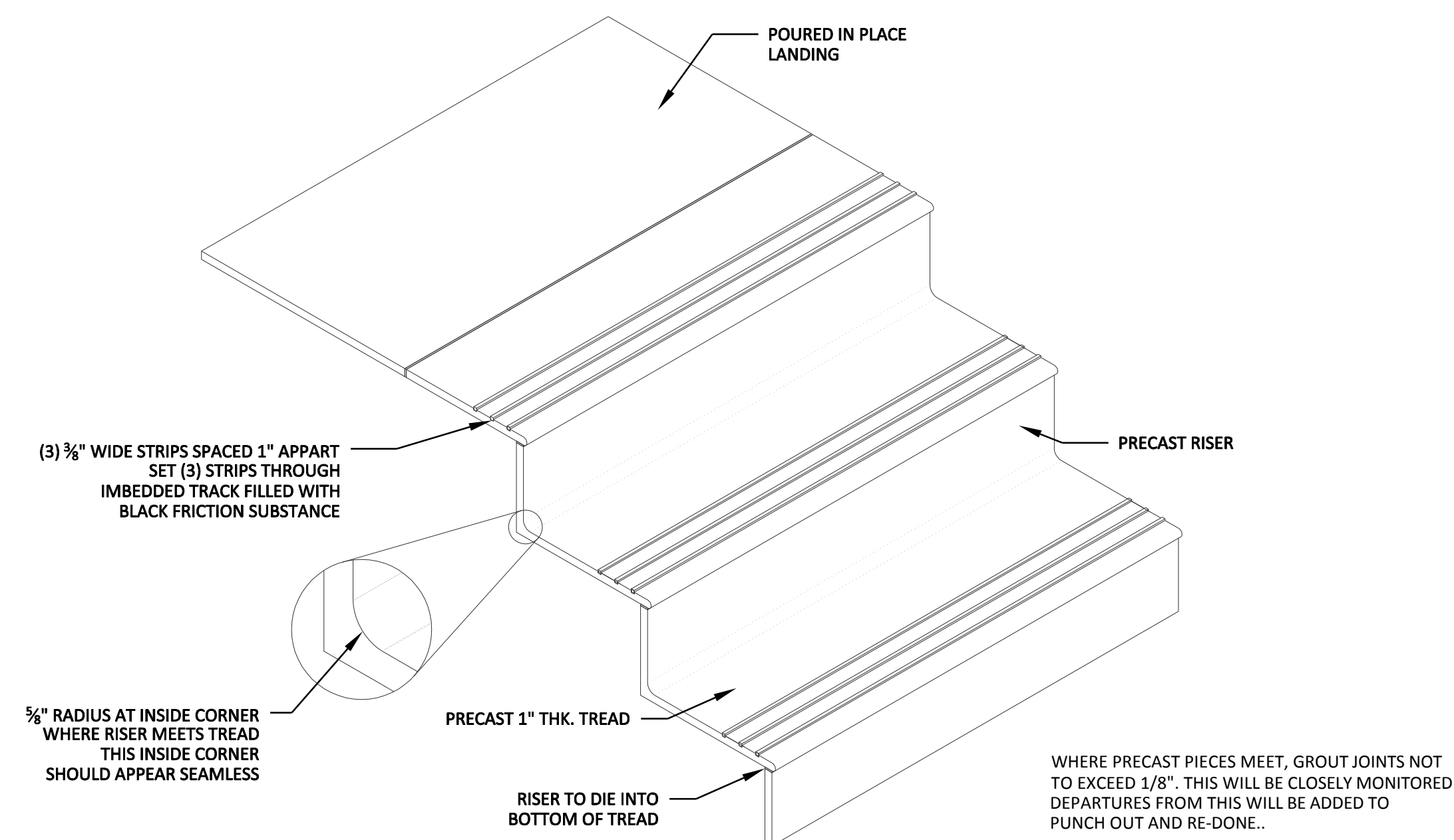
**NOTE:** ALL CURVES MUST BE CONTINUOUS SMOOTH & ROUNDED. NO FLATTENING OR SHARP BENDING OF ANY CURVILINEAR LINES. CAD DESIGN MAY MISTAKENLY RENDER A LINE THIS WAY, BUT IT MUST NOT BE TRANSFERRED TO THE FLOOR. CONSULT DESIGN PROFESSIONAL FOR ANY QUESTIONABLE LINES PRIOR TO POURING T20. STRIPS MUST COME TO CLEAN SHARP POINTS USING A MITERED END (NO BUTTENDS). T20 CONTRACTOR TO PULL UP CARPET AROUND BAGGAGE BELTS & PLACE T20 STRIPS 1/2" OUT FROM BASE / TOE KICK OF BELTS.



**2** FLOOR PLAN - STAIRS  
**BAGGAGE CLAIM SOUTH STAIR**  
 SCALE: 1/2" = 1'-0"



**1** FLOOR PLAN - STAIRS  
**BAGGAGE CLAIM NORTH STAIR**  
 SCALE: 1/2" = 1'-0"



**3** STAIR DETAIL  
 SCALE: 1/2" = 1'-0"  
 "FINISHED STAIR SYSTEMS MUST COMPLY WITH ALL ADA AND SAFETY CODES."



Reynolds, Smith and Hills, Inc.  
 1748 Chestwood Park, Balairend South  
 Jacksonville, Florida 32256  
 904-256-2500 FAX 904-256-2501  
 www.rsandh.com  
 FL Cert Nos. AAC001886 EB0005620 LOC000210



JACKSONVILLE  
 INTERNATIONAL  
 AIRPORT

INTERIOR DESIGN  
 FLOOR FINISHES



Lic# ID 0002289  
 FL# 13 0001146  
 Kelly@kellytaaffedesign.com  
 Tel.: 813.805.5049  
 Fax: 813.805.2371

REVISIONS		
NO.	DESCRIPTION	DATE
1	TZO LEGEND	11/02/11
2	TZO LEGEND T18,T19	12/04/11

DATE ISSUED: 9.25.2011  
 REVIEWED BY: KT  
 DRAWN BY: cAdvice.us - SB  
 DESIGNED BY: KTD.INC - KT  
 AEP PROJECT NUMBER  
 201-7262-009  
 © 2006 REYNOLDS, SMITH AND HILLS, INC.

SHEET TITLE  
**STAIRS  
 LEVEL I  
 BID ALTERNATE  
 TERAZZO**

SHEET NUMBER  
**AI.113**  
 LEVEL-1-CD100.DWG

**GENERAL NOTE:**  
 PROPER SCALE OF THIS COPY AND ACCURACY OF NOTED REFERENCE DIMENSIONS ON DRAWING NEED TO BE VERIFIED IN FIELD BY CONTRACTOR. MINOR VARIANCES DUE TO REPRODUCTION AND PRINTING PROCESS MIGHT OCCUR.

**RS&H**  
 Architectural, Engineering, Planning and Environmental Services  
 Reynolds, Smith and Hills, Inc.  
 1748 Casswood Park Boulevard South  
 Jacksonville, Florida 32256  
 904-256-2500 FAX 904-256-2501  
 www.rsandh.com  
 FL Cert Nos. AAC001886 EB0005620 LOC000210

**JAX**  
 Jacksonville International Airport  
**JACKSONVILLE**  
 AVIATION AUTHORITY

**JACKSONVILLE**  
**INTERNATIONAL**  
**AIRPORT**

**INTERIOR DESIGN**  
**FLOOR FINISHES**

**KTD Inc.**  
*Design*  
**KELLY TAAFFE DESIGN**

Lic# ID 0002289  
 FL# 13 0001146  
 Kelly@kellytaaffedesign.com  
 Tel: 813.895.5049  
 Fax: 813.805.2371

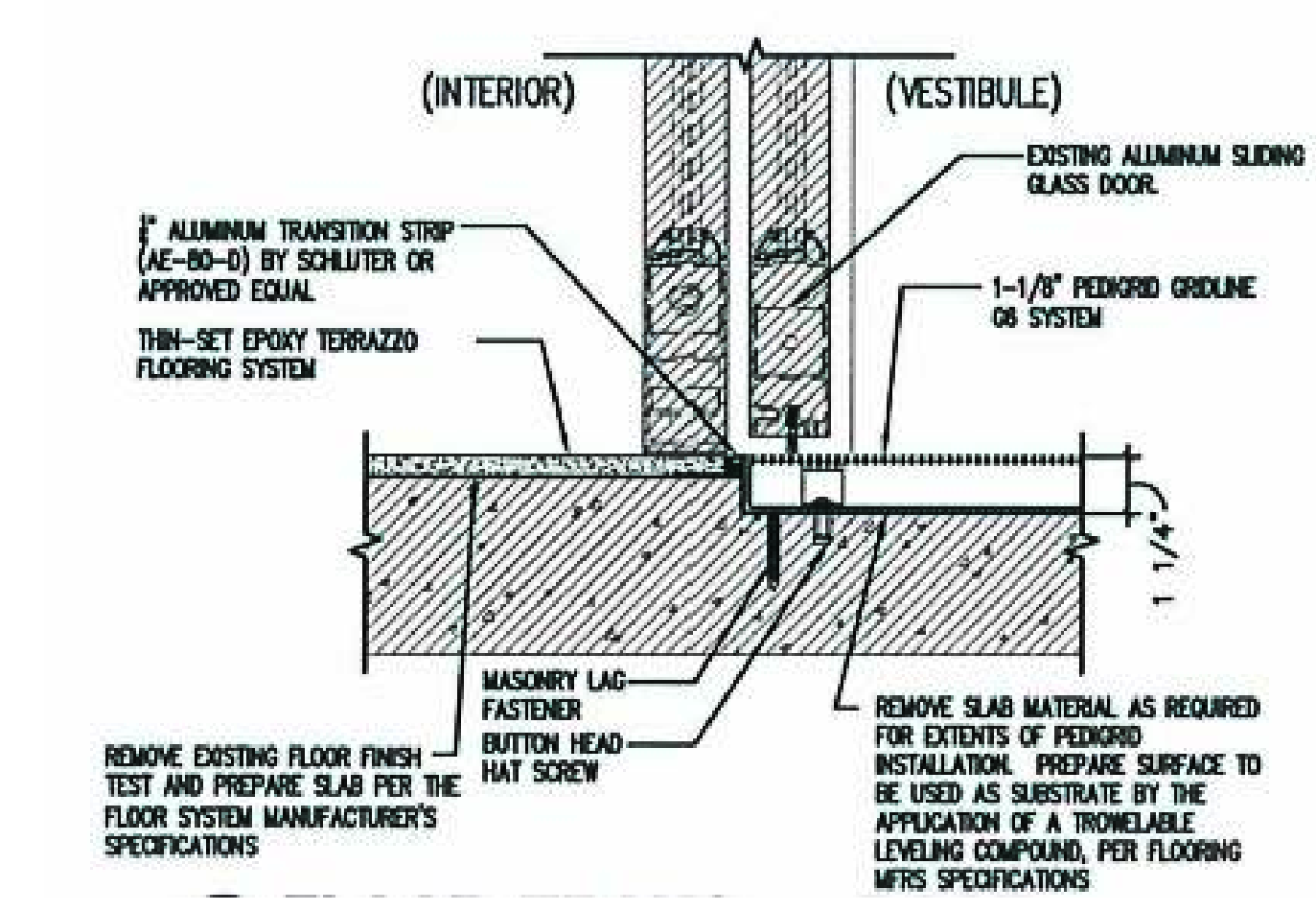
**REVISIONS**

NO.	DESCRIPTION	DATE
1	TZO LEGEND	11/02/11
2	TZO LEGEND T18, T19	12/04/11

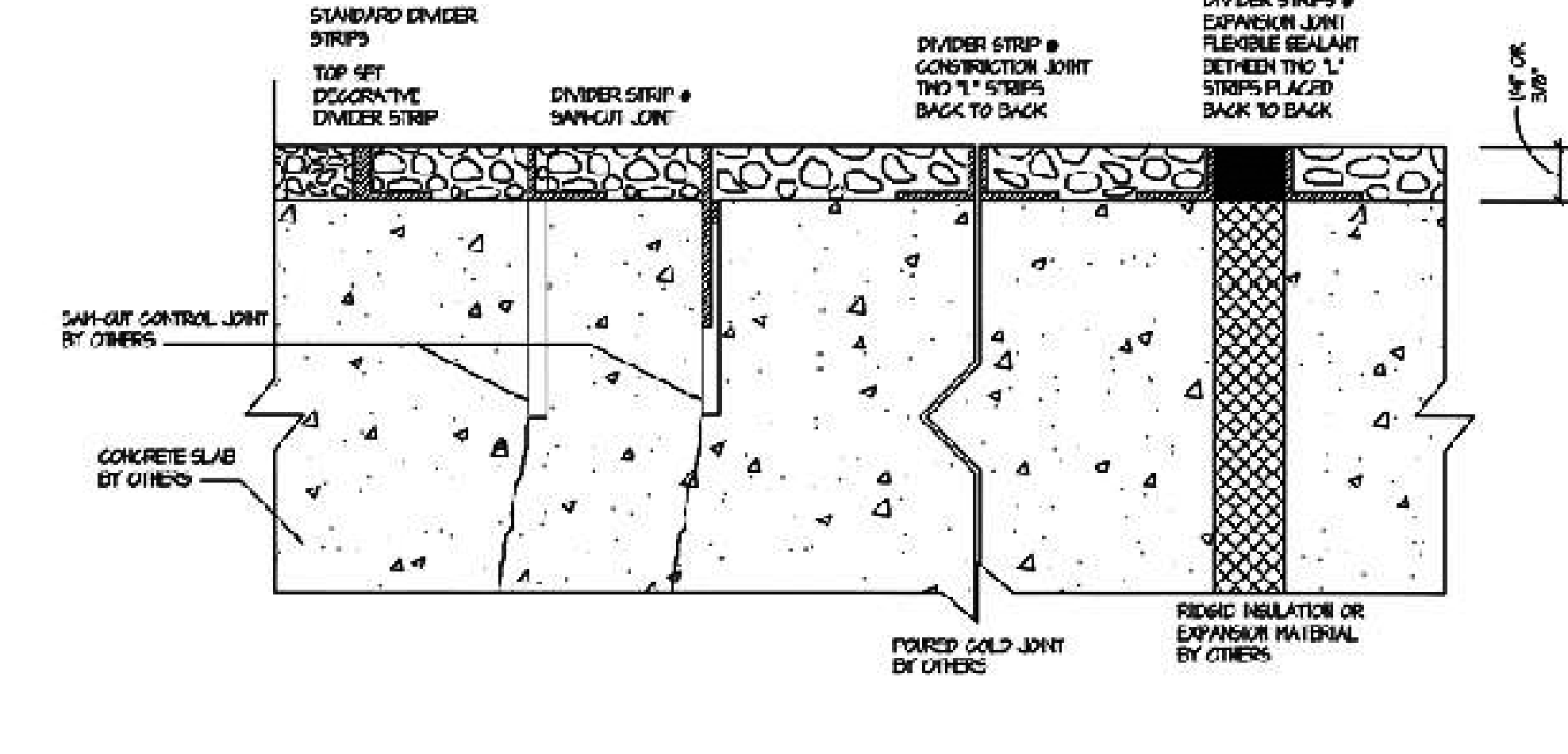
DATE ISSUED: 9.25.2011  
 REVIEWED BY: KT  
 DRAWN BY: cAdvice.us - SB  
 DESIGNED BY: KTD.INC - KT  
 AEP PROJECT NUMBER  
 201-7262-009  
 © 2006 REYNOLDS, SMITH AND HILLS, INC.

SHEET TITLE  
**DETAILS**  
**LEVEL I**  
**BAGAGE CLAIM**  
**TERAZZO**  
 SHEET NUMBER  
**AI.114**  
 LEVEL-1-CD100.DWG

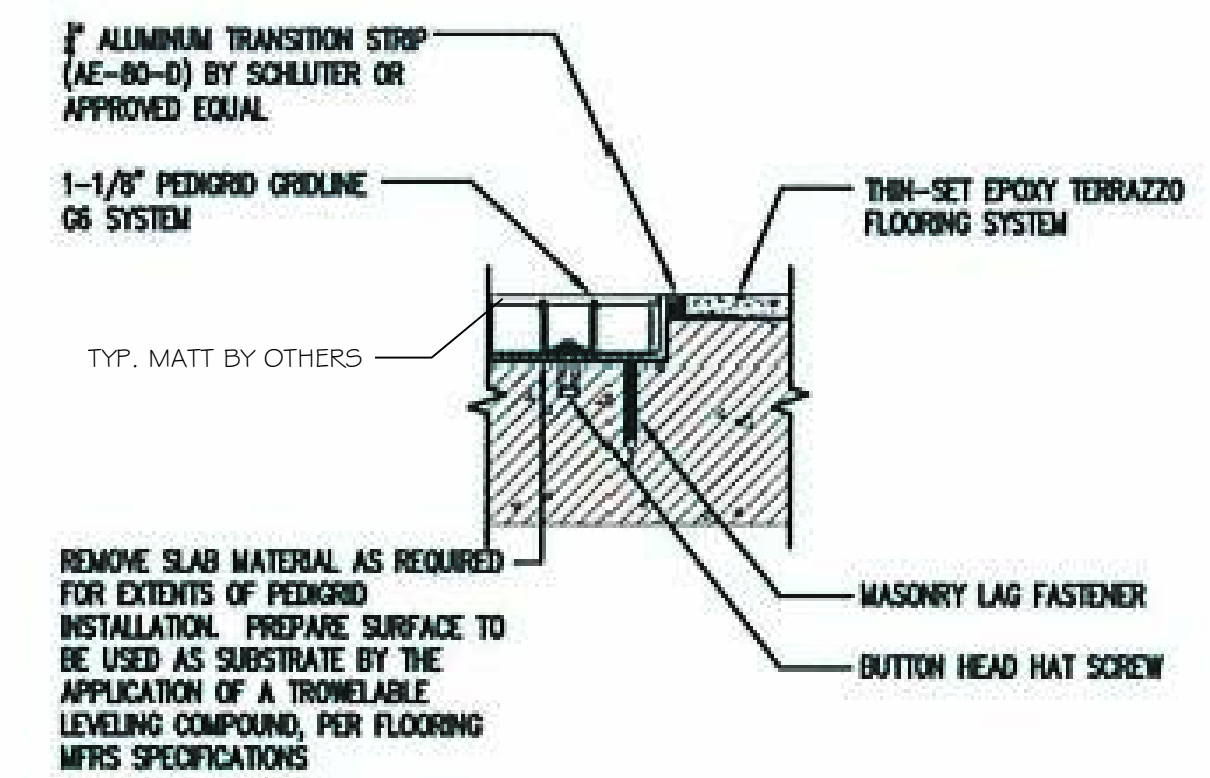
**EPOXY TERRAZZO 1/4" OR 3/8"**



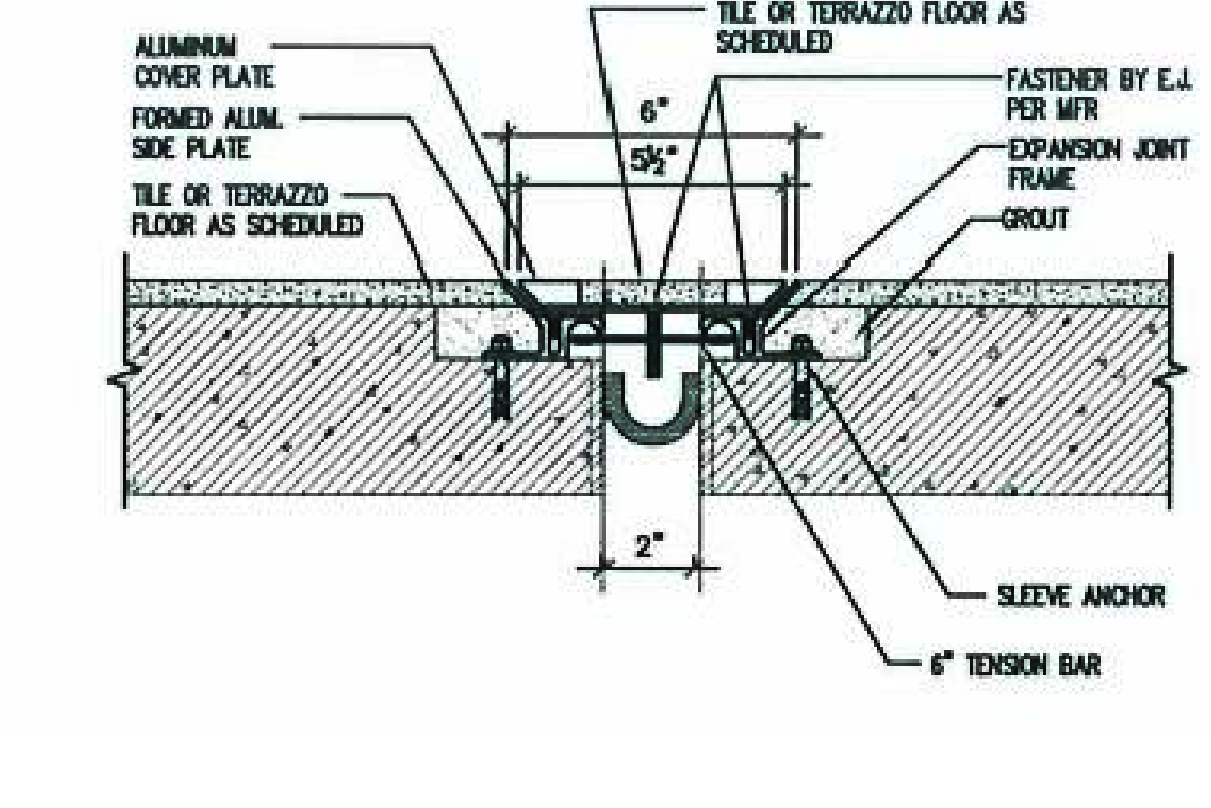
**1 FLOOR TRANSITION @ DOOR**  
 AI.114 SCALE: N/A



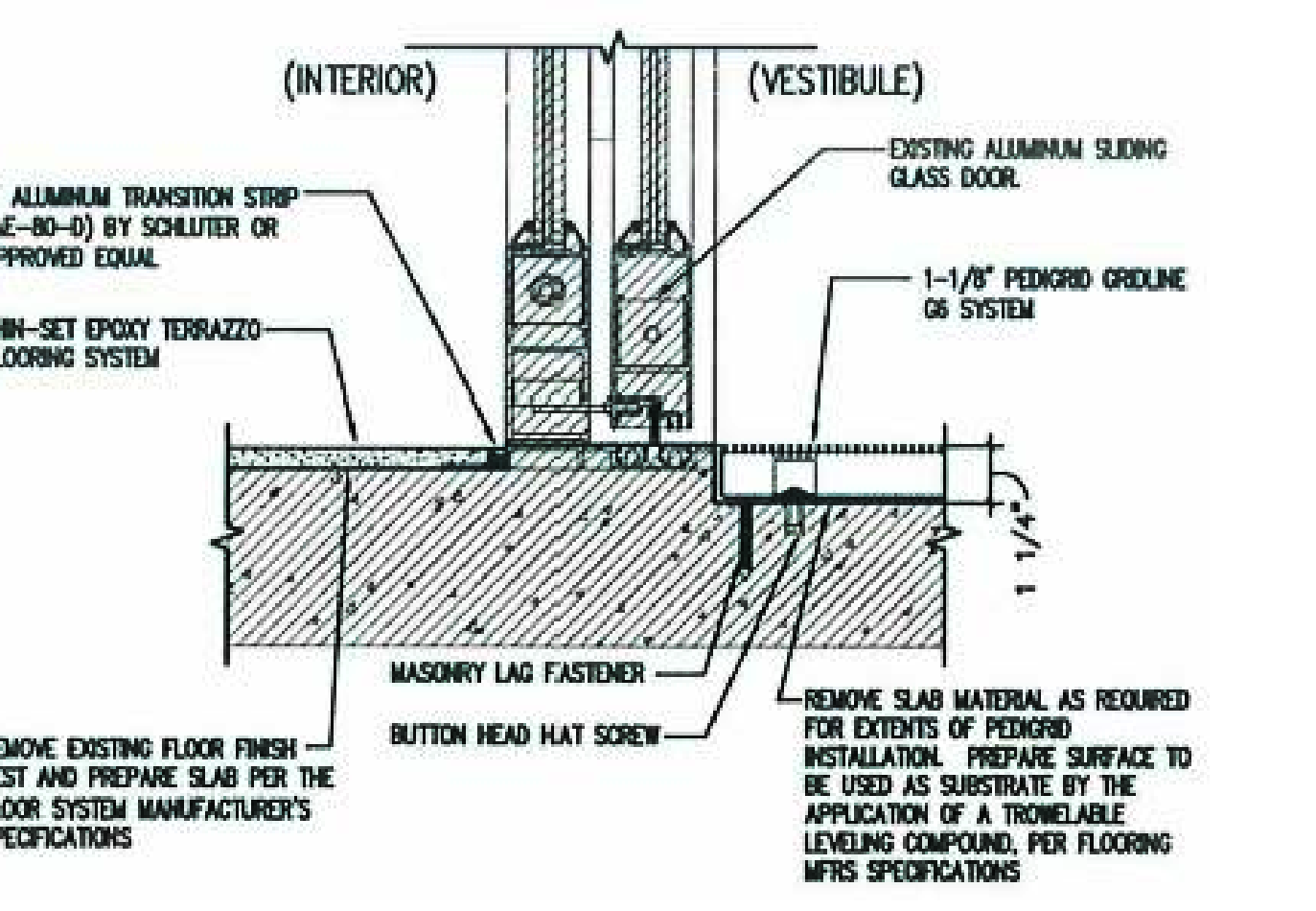
**2 STANDARD DIVIDER STRIPS**  
 AI.114 SCALE: N/A



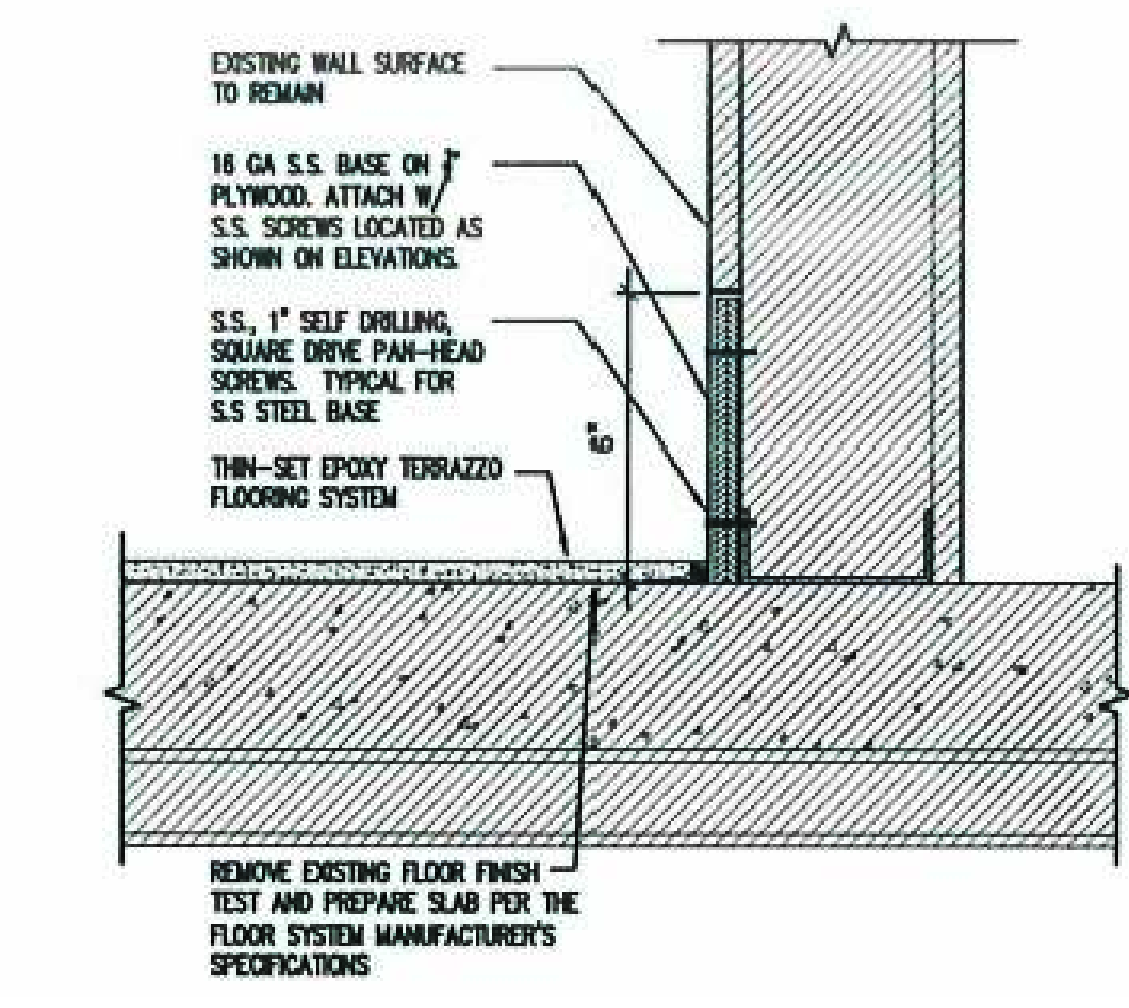
**3 W.O.MATT/TERR TRANSITION**  
 AI.114 SCALE: N/A



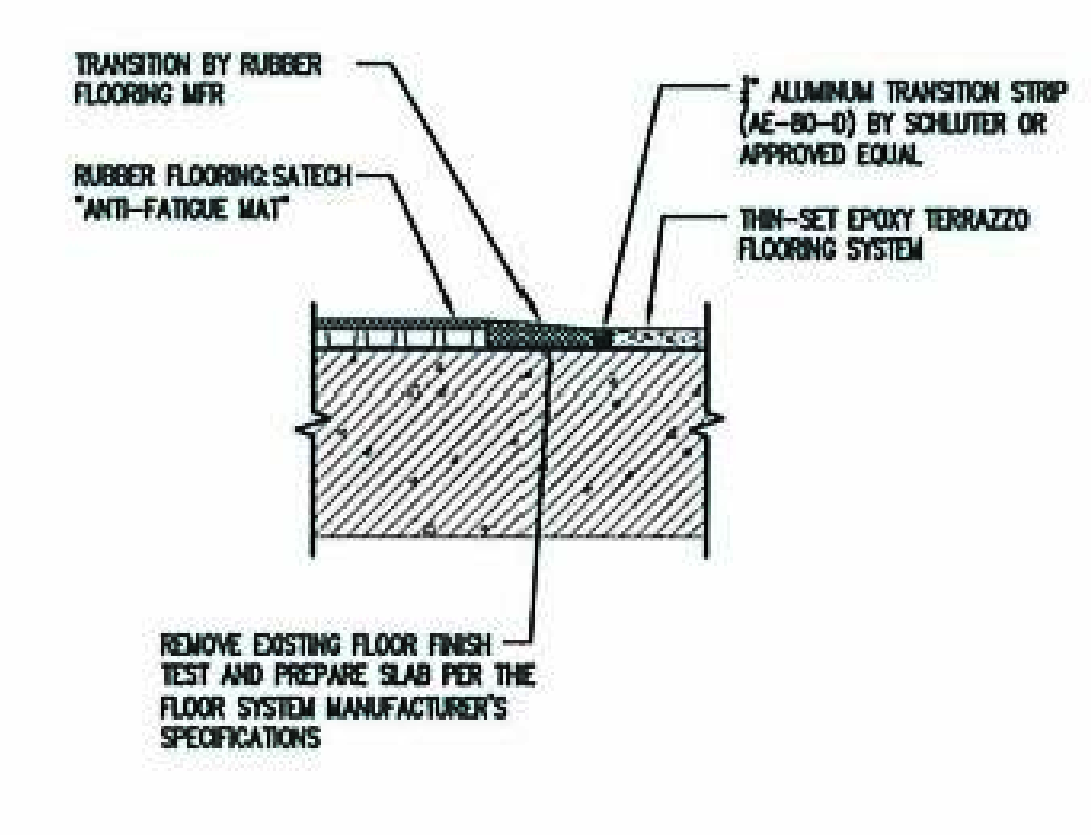
**4 EXPANSION JOINT DTL.**  
 AI.114 SCALE: N/A



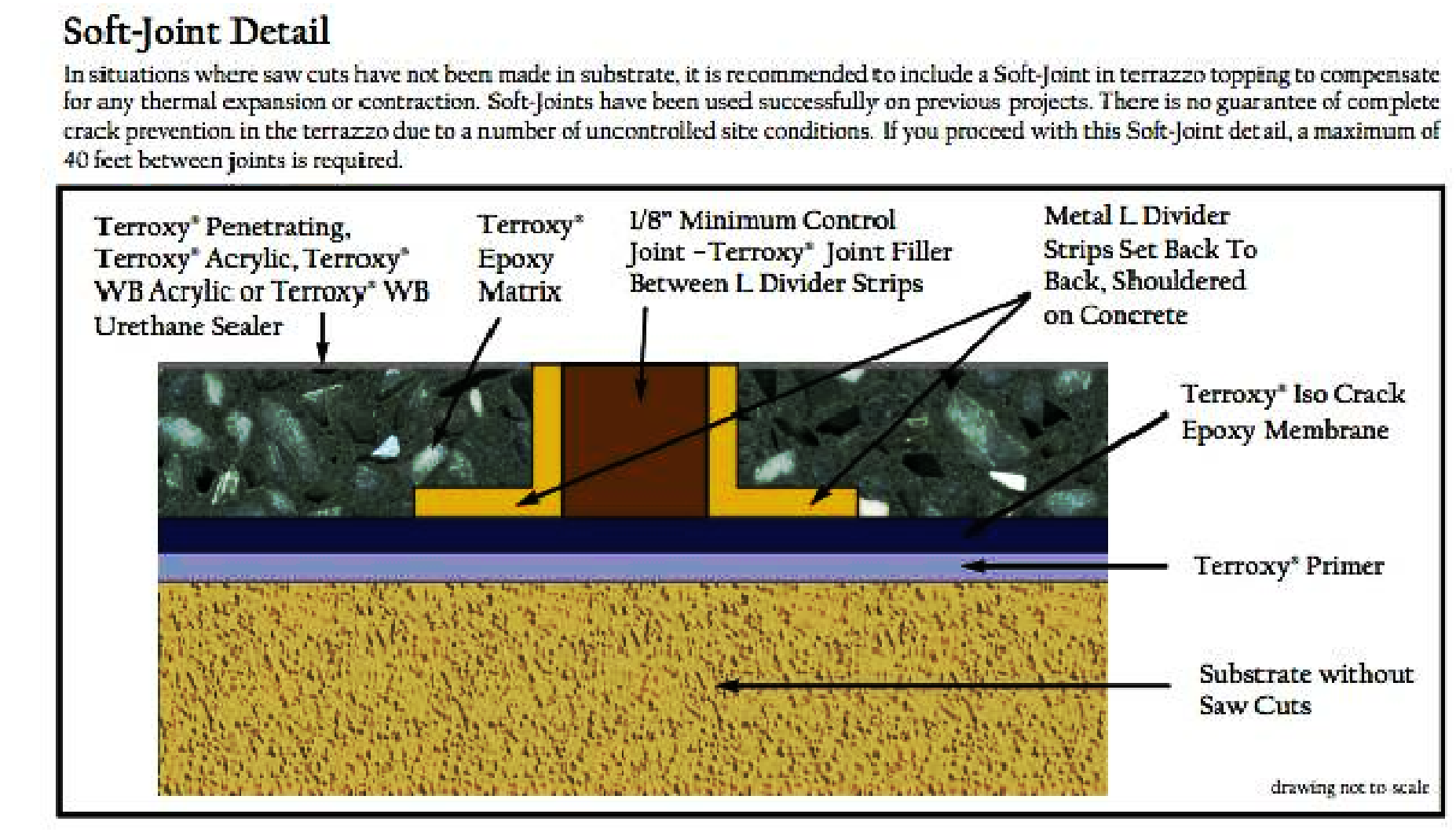
**5 INTERIOR DOOR THRESHOLD**  
 AI.114 SCALE: N/A



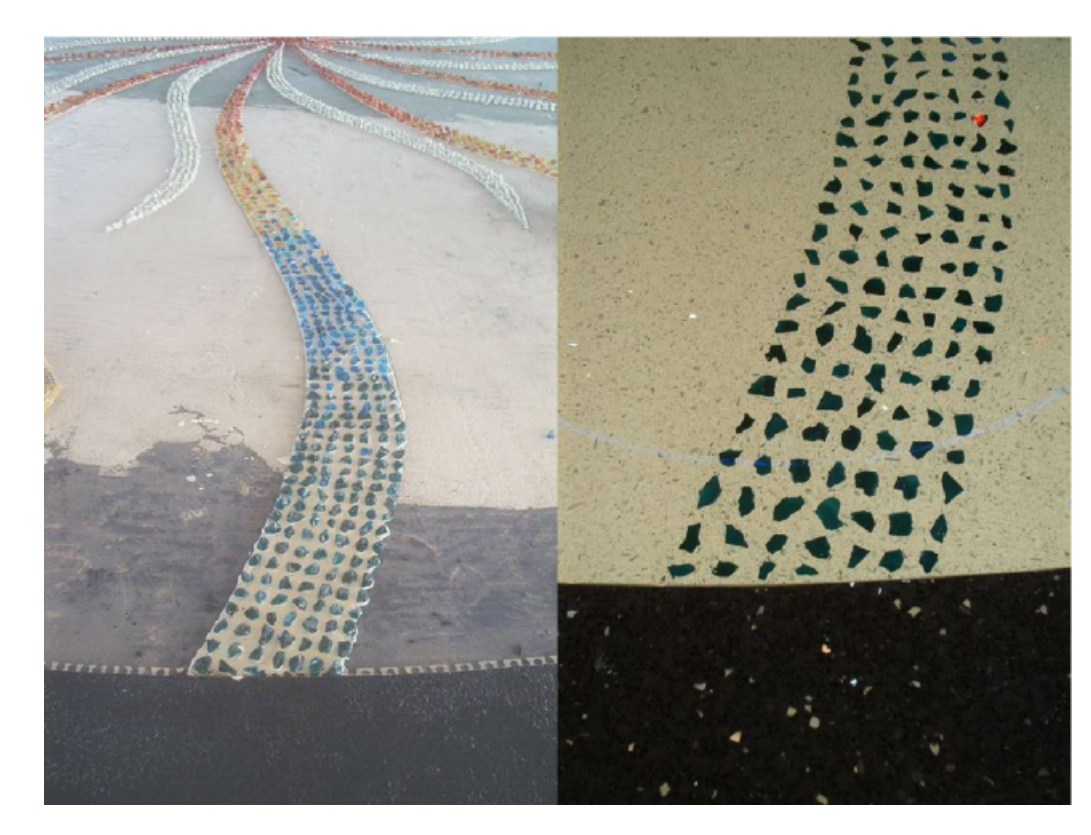
**6 STAINLESS STEEL BASE DTL.**  
 AI.114 SCALE: N/A



**7 TERR / RUBBER FLOOR TRANS**  
 AI.114 SCALE: N/A



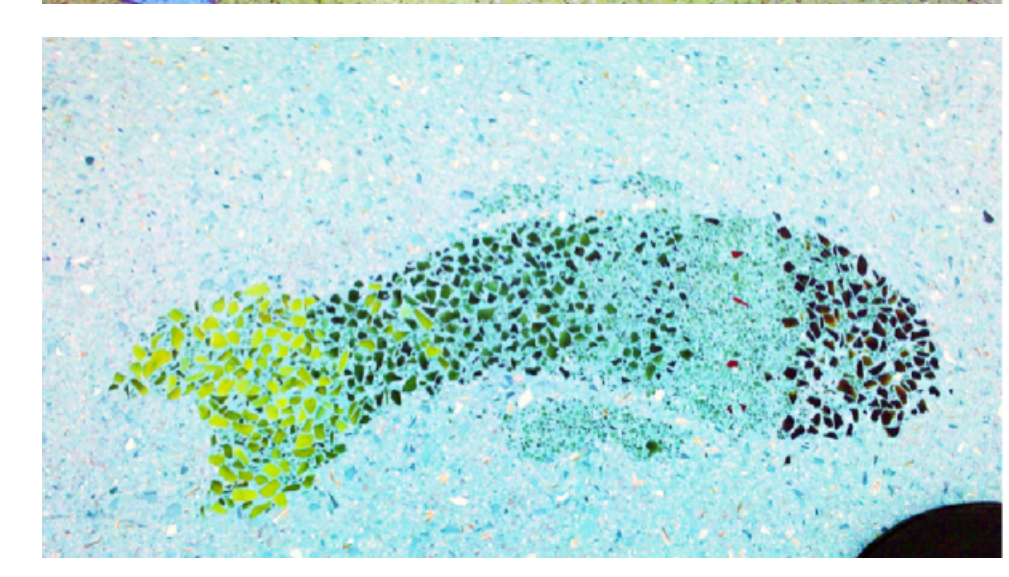
**08 SOFT JOINT DETAIL**  
 AI.114 SCALE: N/A



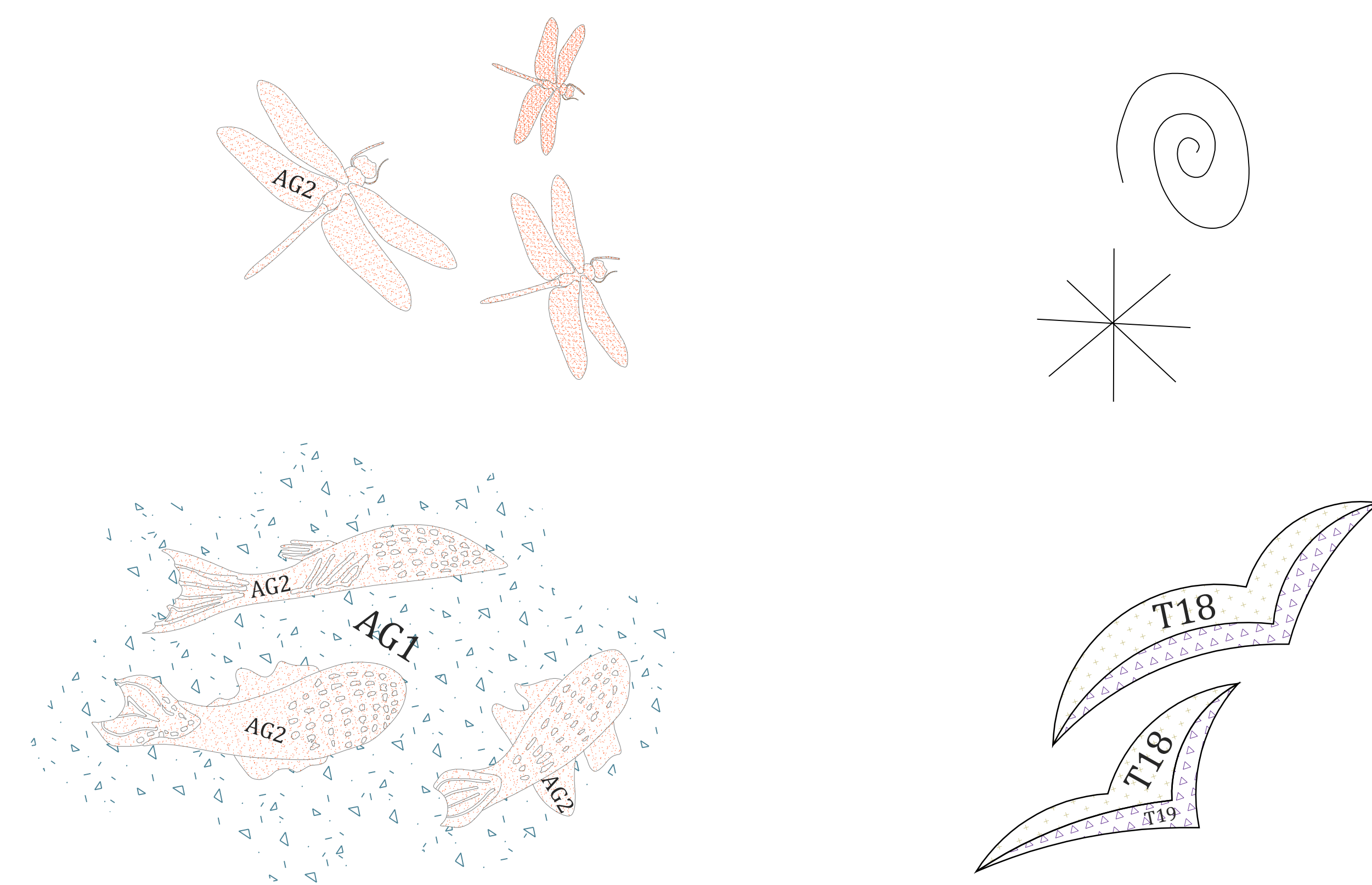
**09** AI.114  
 EXAMPLES OF AGGREGATE DESIGN FEATURES-DESIGN FEATURES ACHIEVED BY LAYING LARGER AGGREGATE INTO SPECIFIC SHAPES AND IMAGES.



**10** AI.114  
 EXAMPLE OF AGG SCATTERING-RANDOM VARIATIONS TO AGGREGATE ACHIEVED BY SCATTERING LARGER AGG. AMONG REGULAR MATRIX JUST AFTER IT IS POURED, WHILE IT IS IN LIQUID STATE



**11** AI.114  
**AG-2 DESIGN FEATURES**  
 SCALE: N/A



**11** AI.114  
**AG-2 DESIGN FEATURES**  
 SCALE: N/A