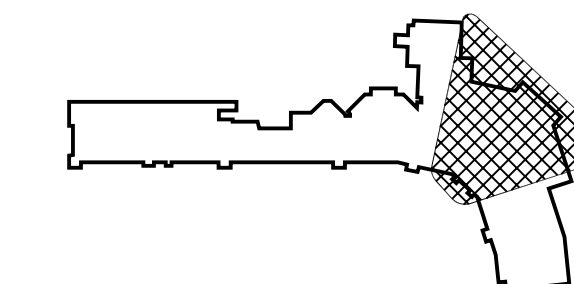


**TERMINAL IMPROVEMENT
PROJECT PHASE 1**

KEY PLAN



REVISIONS

No.	Description	Date	By

Designed by: _____ Drawn by: _____ Checked by: _____

Project Name: _____

TERMINAL IMPROVEMENT PROJECT PHASE 1

**FLOOR PLAN
GROUND LEVEL
GATES 2-6**

LPA Project Number: **AR178005.8** FAA AIP Project Number: _____
Date: **AUGUST 31, 2007** Division: _____
Drawing Number: _____

I1.02

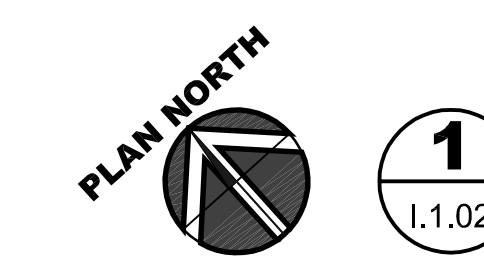
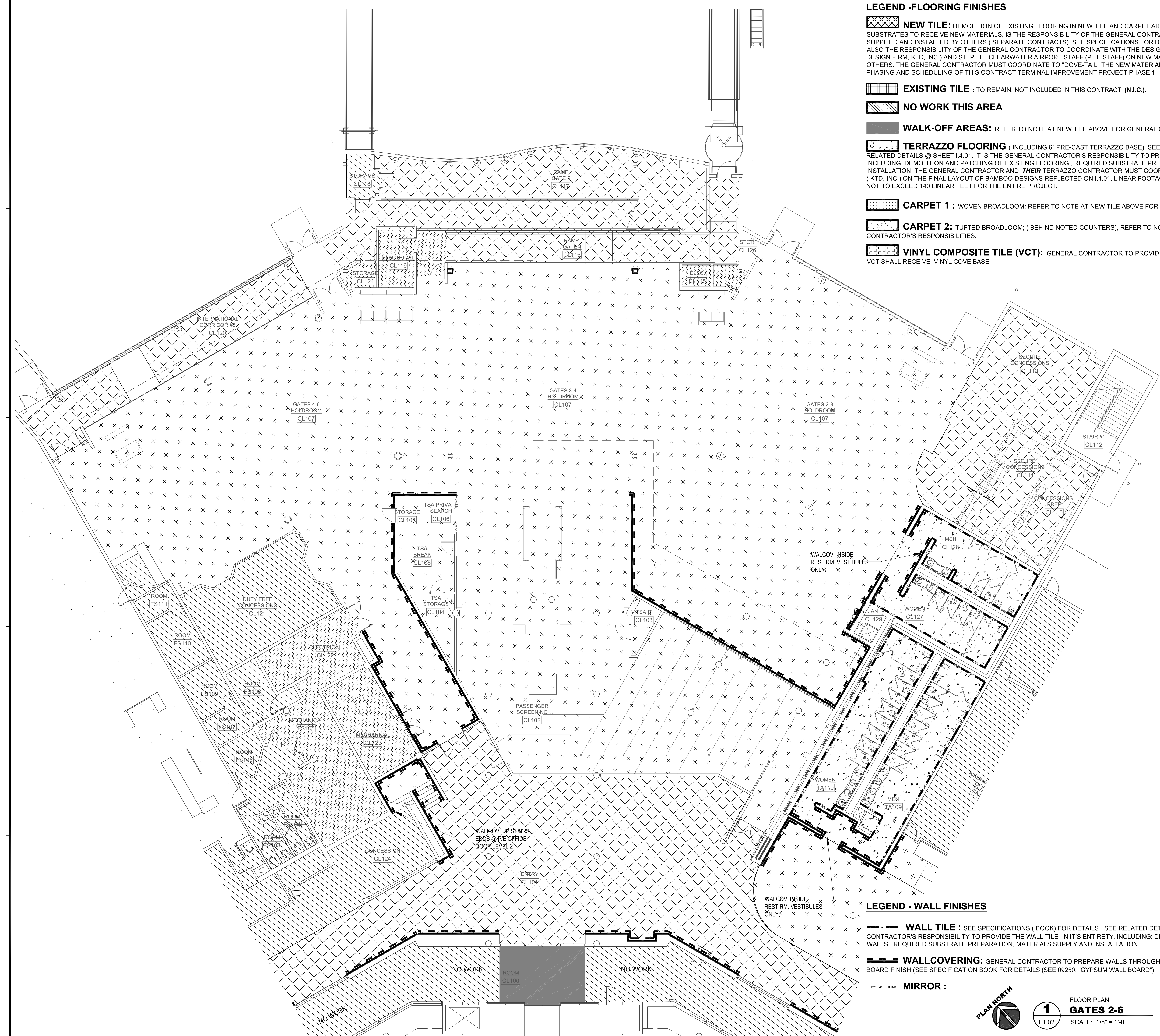
LEGEND - FLOORING FINISHES

- NEW TILE:** DEMOLITION OF EXISTING FLOORING IN NEW TILE AND CARPET AREAS, AND THE PREPARATION OF THE SUBSTRATES TO RECEIVE NEW MATERIALS, IS THE RESPONSIBILITY OF THE GENERAL CONTRACTOR. THE NEW TILE AND CARPET SHALL BE SUPPLIED AND INSTALLED BY OTHERS (SEPARATE CONTRACTS). SEE SPECIFICATIONS FOR DETAILS ON SUBSTRATE REQUIREMENTS. IT IS ALSO THE RESPONSIBILITY OF THE GENERAL CONTRACTOR TO COORDINATE WITH THE DESIGN TEAM (ARCHITECT, LPA AND INTERIOR DESIGN FIRM, KTD, INC.) AND ST. PETE-CLEARWATER AIRPORT STAFF (P.I.E.STAFF) ON NEW MATERIALS SUPPLIED AND INSTALLED BY OTHERS. THE GENERAL CONTRACTOR MUST COORDINATE TO "DOVE-TAIL" THE NEW MATERIALS PROVIDED "BY OTHERS" INTO THE PHASING AND SCHEDULING OF THIS CONTRACT TERMINAL IMPROVEMENT PROJECT PHASE 1.
- EXISTING TILE :** TO REMAIN, NOT INCLUDED IN THIS CONTRACT (N.I.C.).
- NO WORK THIS AREA**
- WALK-OFF AREAS:** REFER TO NOTE AT NEW TILE ABOVE FOR GENERAL CONTRACTOR'S RESPONSIBILITIES.
- TERRAZZO FLOORING** (INCLUDING 6" PRE-CAST TERRAZZO BASE); SEE SPECIFICATIONS (BOOK) FOR DETAILS . SEE RELATED DETAILS @ SHEET I.4.01. IT IS THE GENERAL CONTRACTOR'S RESPONSIBILITY TO PROVIDE THE TERRAZZO IN ITS ENTIRETY, INCLUDING: DEMOLITION AND PATCHING OF EXISTING FLOORING , REQUIRED SUBSTRATE PREPARATION, MATERIALS SUPPLY AND INSTALLATION. THE GENERAL CONTRACTOR AND **THEIR** TERRAZZO CONTRACTOR MUST COORDINATE WITH PROJECT INTERIOR DESIGNER (KTD, INC.) ON THE FINAL LAYOUT OF BAMBOO DESIGNS REFLECTED ON I.4.01. LINEAR FOOTAGE OF PRE-CAST BAMBOO FLOOR INSERTS NOT TO EXCEED 140 LINEAR FEET FOR THE ENTIRE PROJECT.
- CARPET 1 :** WOVEN BROADLOOM; REFER TO NOTE AT NEW TILE ABOVE FOR GENERAL CONTRACTOR'S RESPONSIBILITIES.
- CARPET 2:** TUFTED BROADLOOM; (BEHIND NOTED COUNTERS), REFER TO NOTE AT NEW TILE ABOVE FOR GENERAL CONTRACTOR'S RESPONSIBILITIES.
- VINYL COMPOSITE TILE (VCT):** GENERAL CONTRACTOR TO PROVIDE VCT IN ITS ENTIRETY. AREAS RECEIVING VCT SHALL RECEIVE VINYL COVE BASE.

LEGEND - WALL FINISHES

- WALL TILE :** SEE SPECIFICATIONS (BOOK) FOR DETAILS . SEE RELATED DETAILS @ SHEET I.4.01. IT IS THE GENERAL CONTRACTOR'S RESPONSIBILITY TO PROVIDE THE WALL TILE IN ITS ENTIRETY, INCLUDING: DEMOLITION AND PATCHING OF EXISTING WALLS , REQUIRED SUBSTRATE PREPARATION, MATERIALS SUPPLY AND INSTALLATION.
- WALLCOVERING:** GENERAL CONTRACTOR TO PREPARE WALLS THROUGH PRIMING AND SUPPLY A LEVEL 2 WALL BOARD FINISH (SEE SPECIFICATION BOOK FOR DETAILS (SEE 09250, "GYPSUM WALL BOARD")

MIRROR :



1
1.1.02

FLOOR PLAN
GATES 2-6
SCALE: 1/8" = 1'-0"